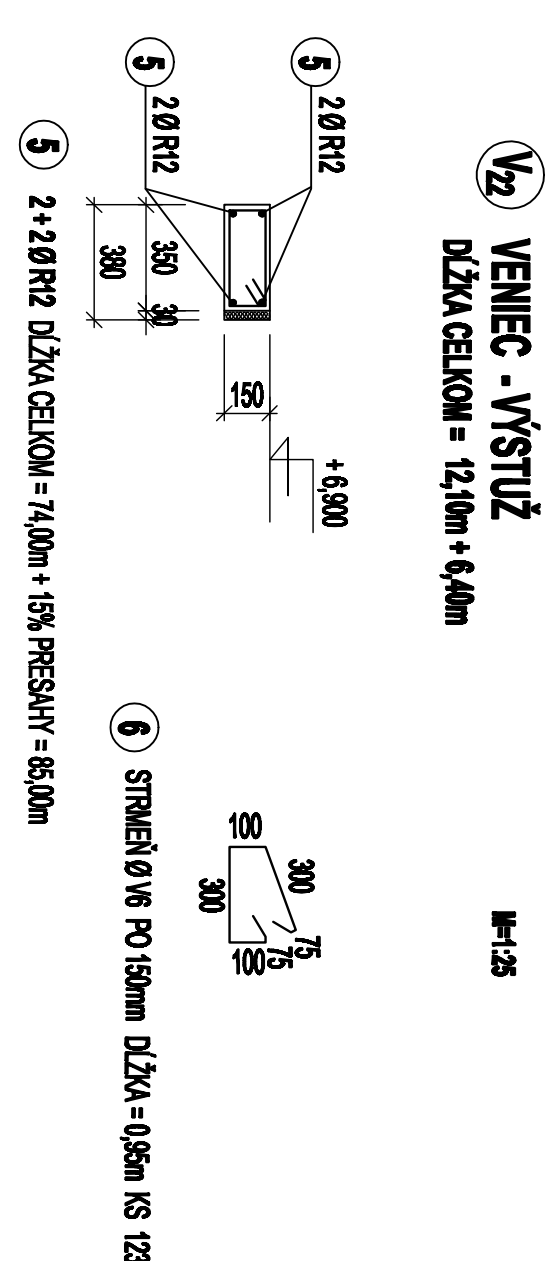
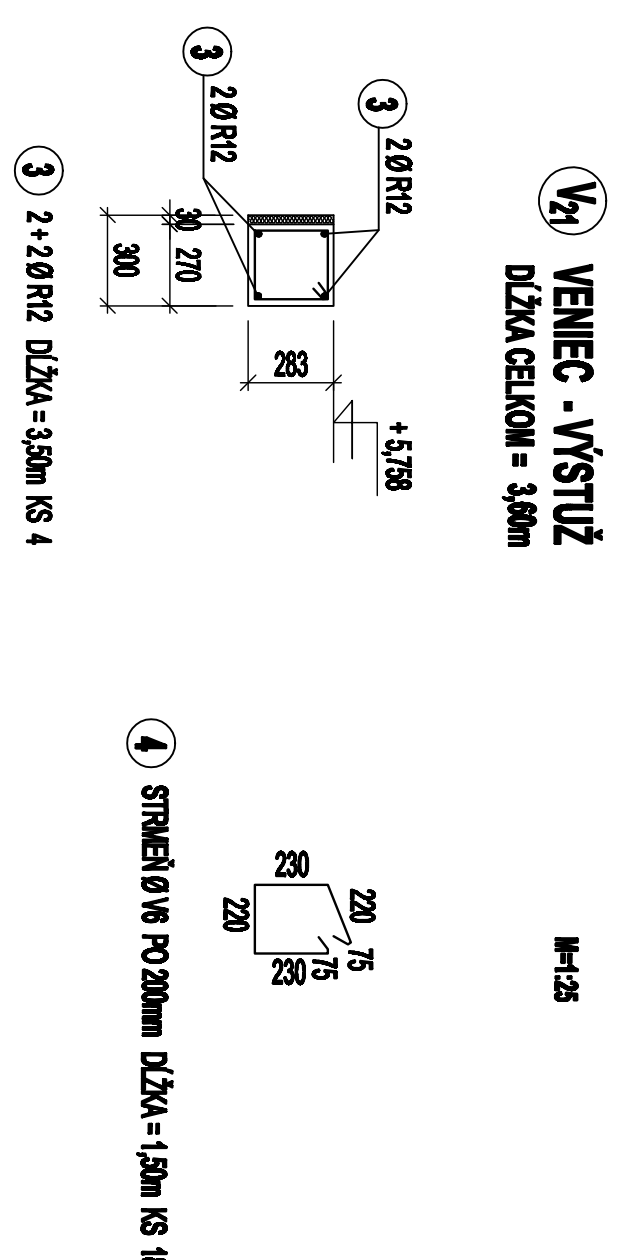
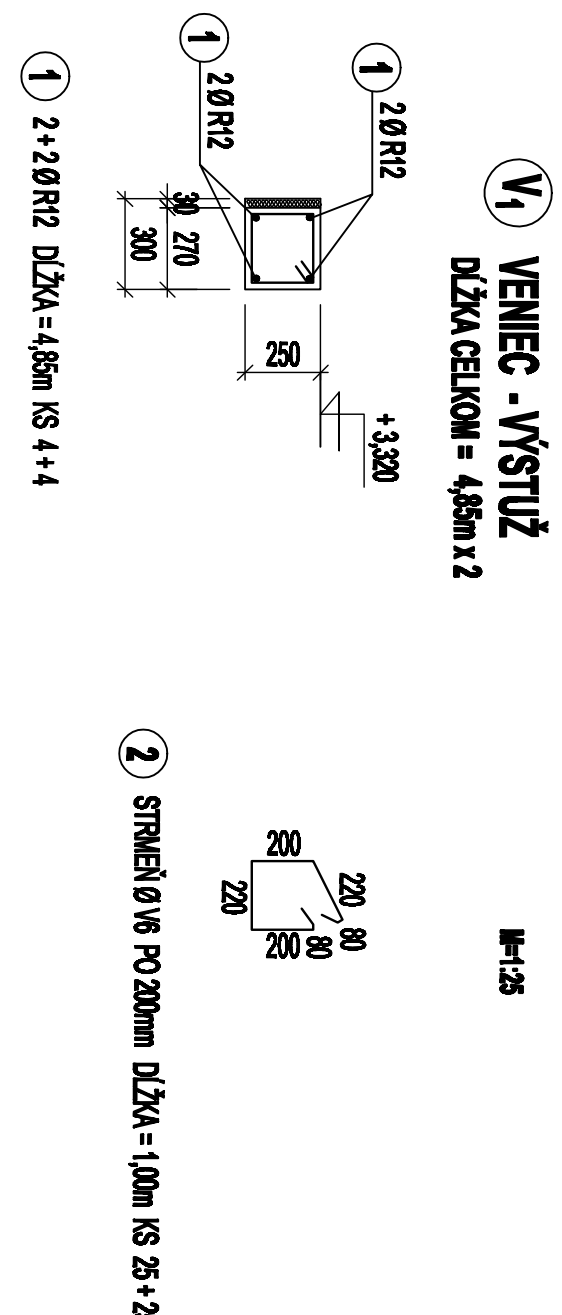
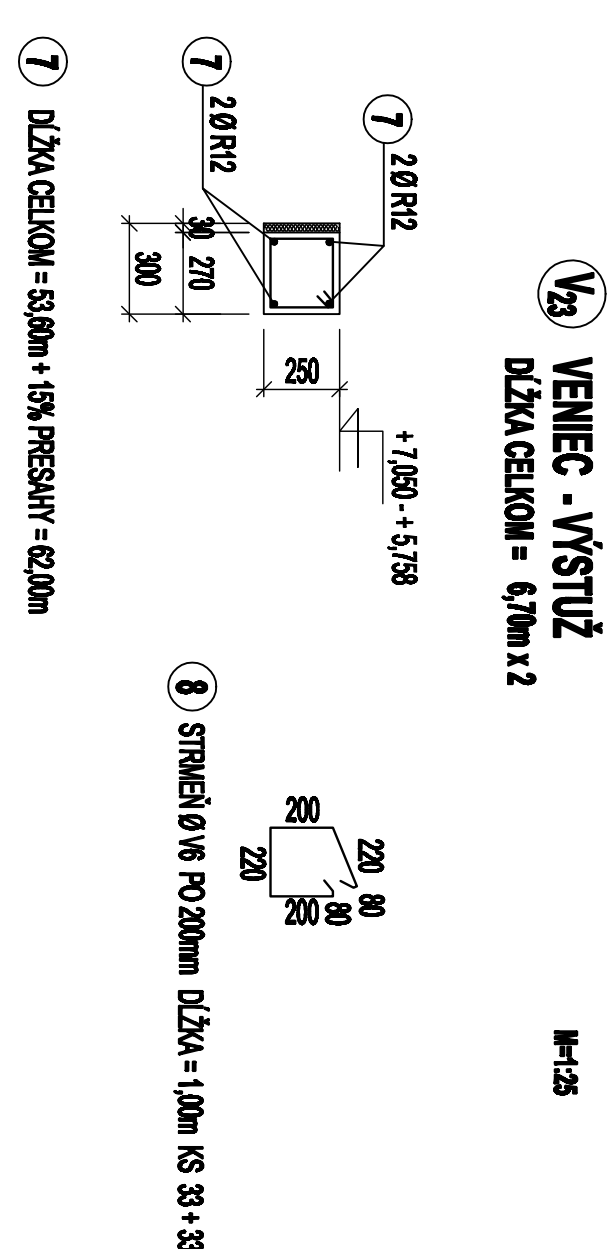


VENCE

[illegible]

VÝKAZ VÝSTUŽE

TEST		DZKA (CEM) (m)			DZKA (CEM) (m)	
		OC-1995 - R		OC-1945 - V		
POL.	8	DZKA (m)	IS	8m5	8m12	
1	R12	450	8			
2	V6	100	50	50,0		30,0
3	R12	300	4			14,0
4	V6	150	18	27,0		65,0
5	R12					
6	V6	90	123	116,5		
7	R12					62,0
8	V6	100	66	60,0		
DZKA (CEM) (m)						
Vlaktoke				250,5		190,0
Vlaktoke (procent) (m)				12,2		0,89
CEM (VIA) (m)				57,0		177,50