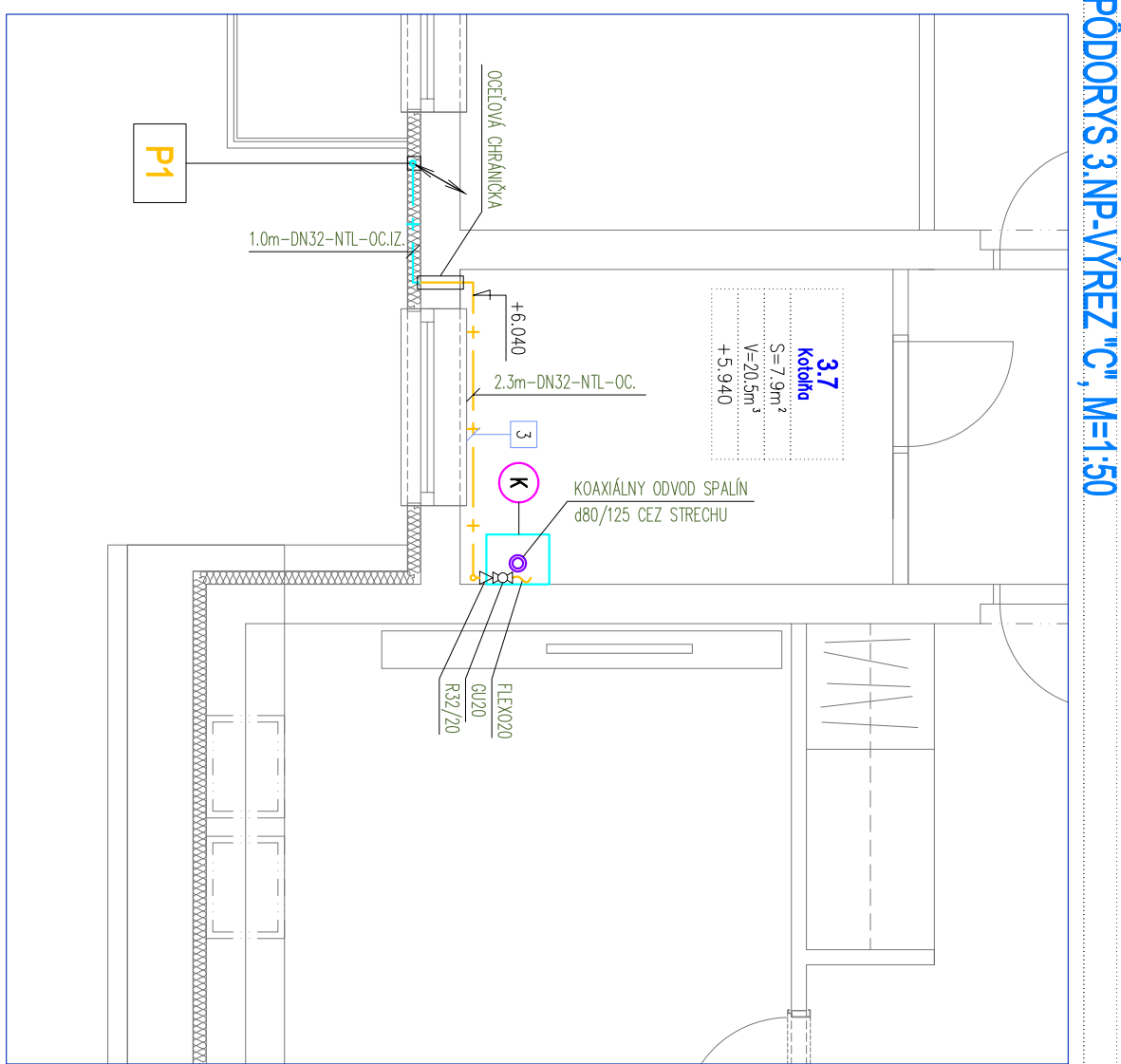
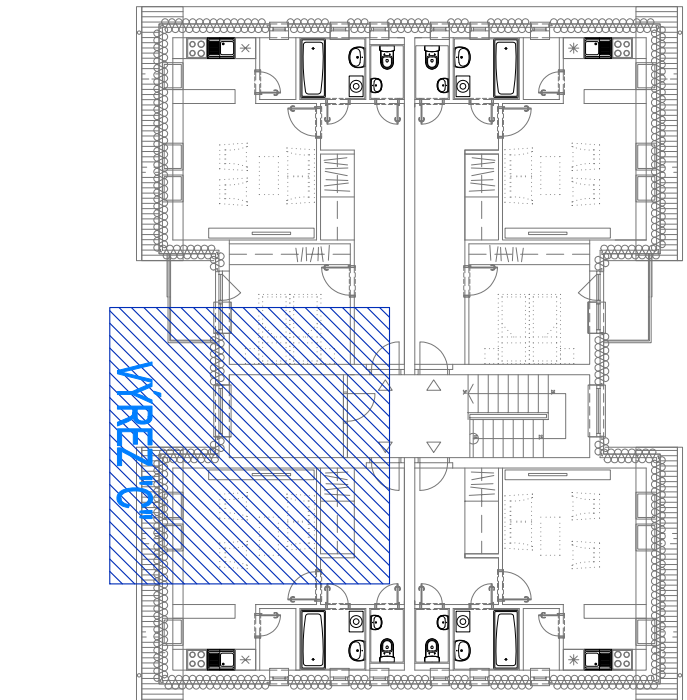


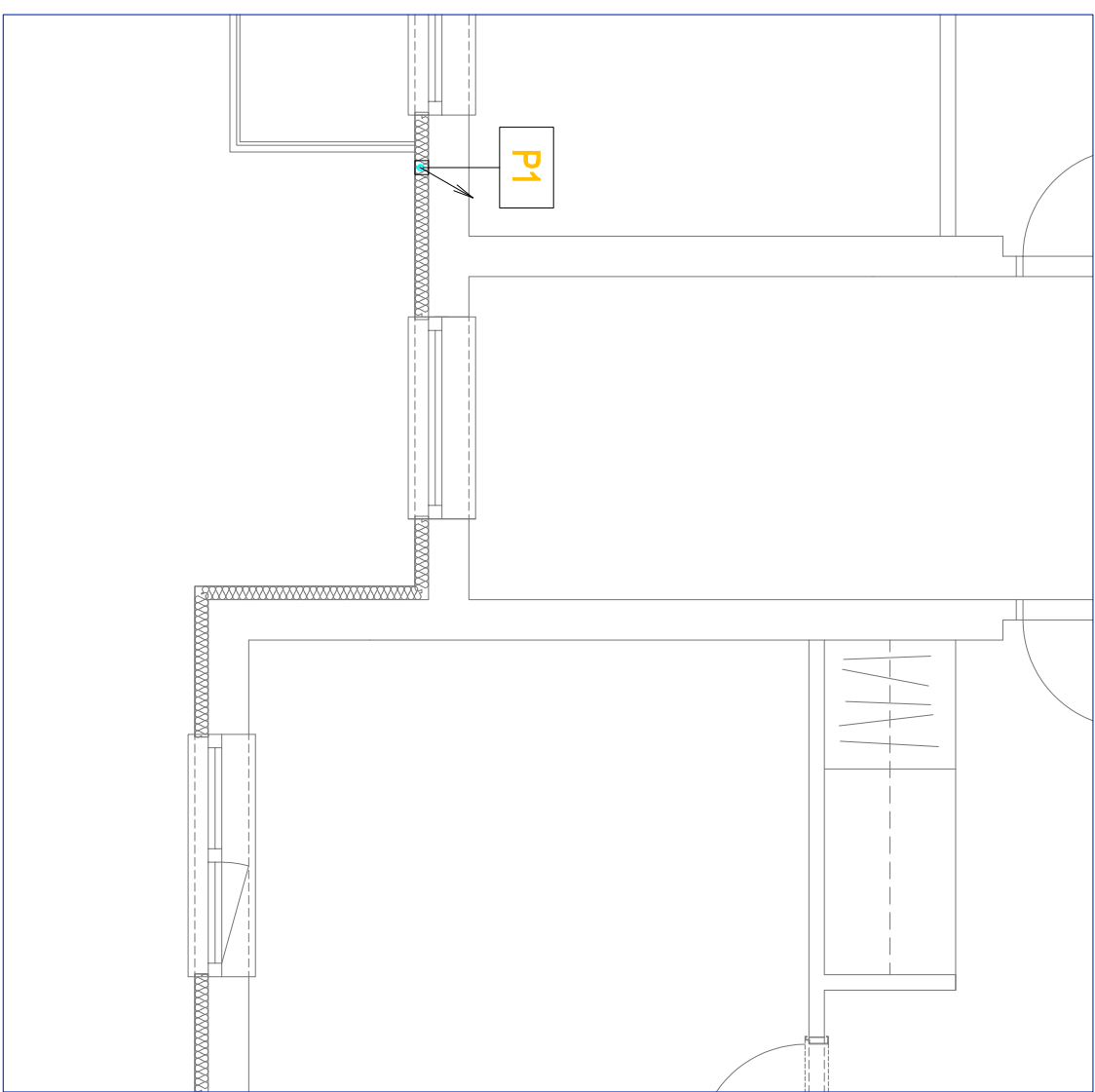
ODVOD SPALIN, $M=1:50$



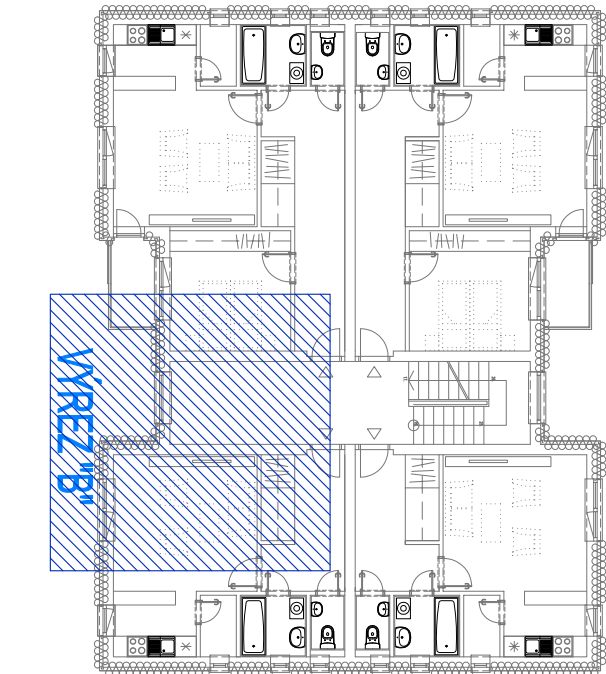
PODORYS 3.NP-VYREZ "C", M=1:50



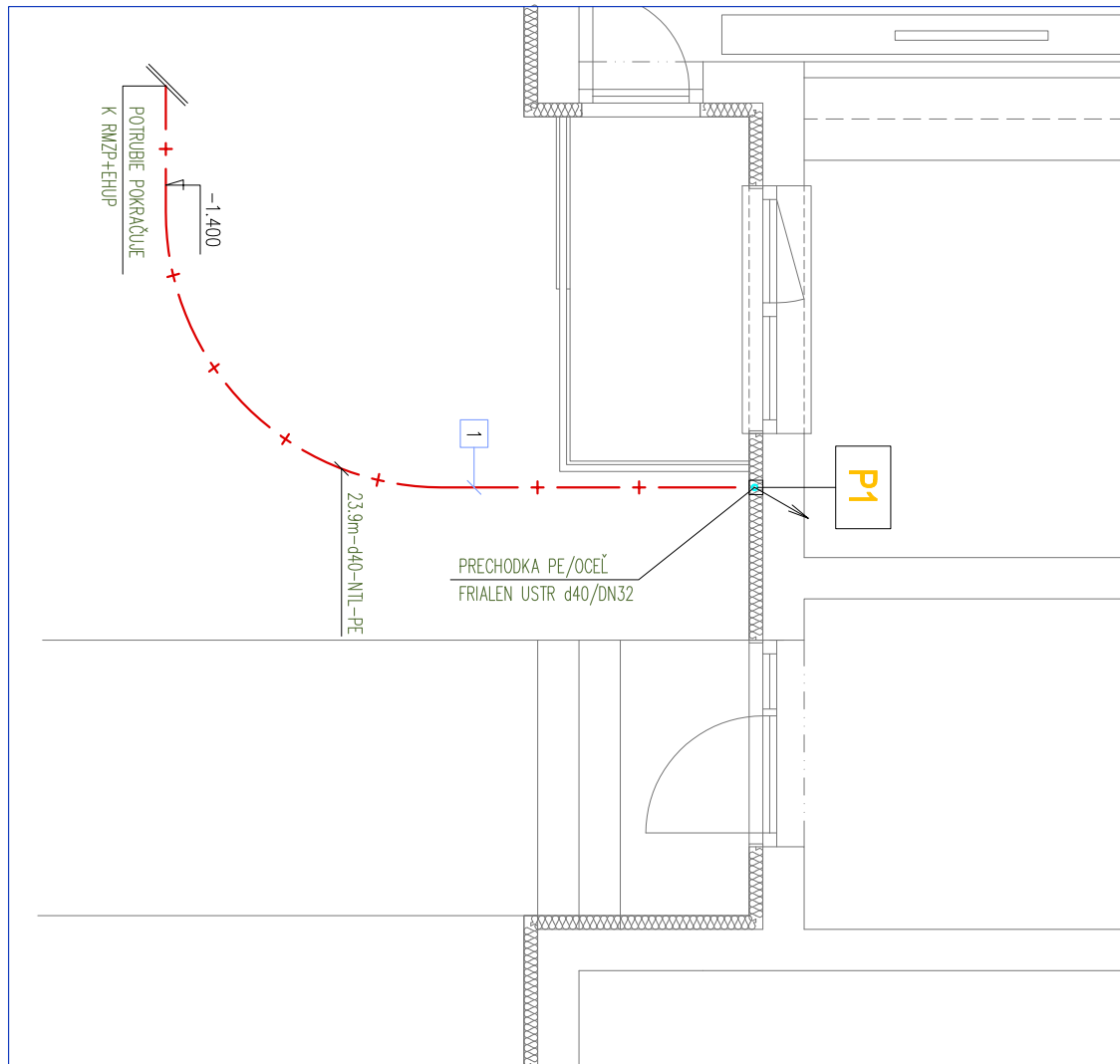
PÓDORYS 3.NP, M=1:200



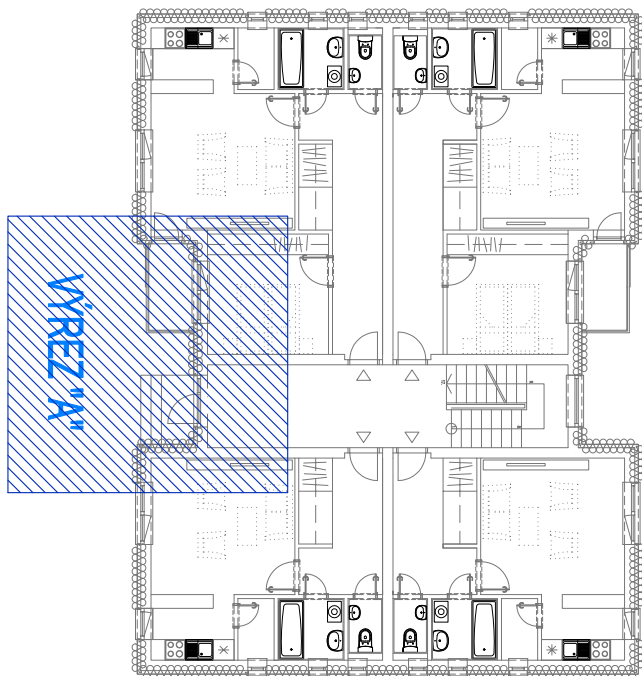
PŮDORYS 2.NP-VÝREZ "B", M=1:50



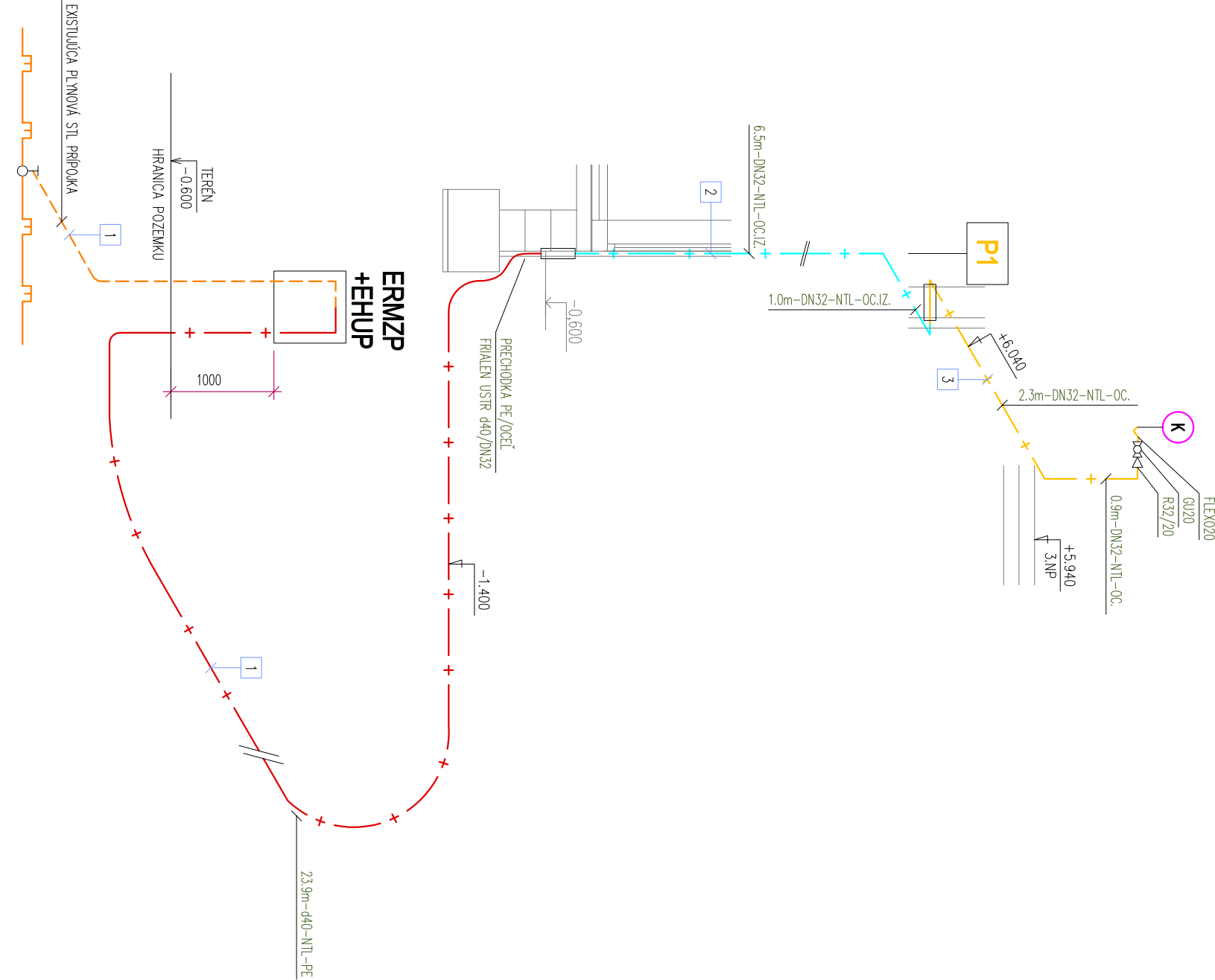
PÓDORYS 2.NP, M=1:200



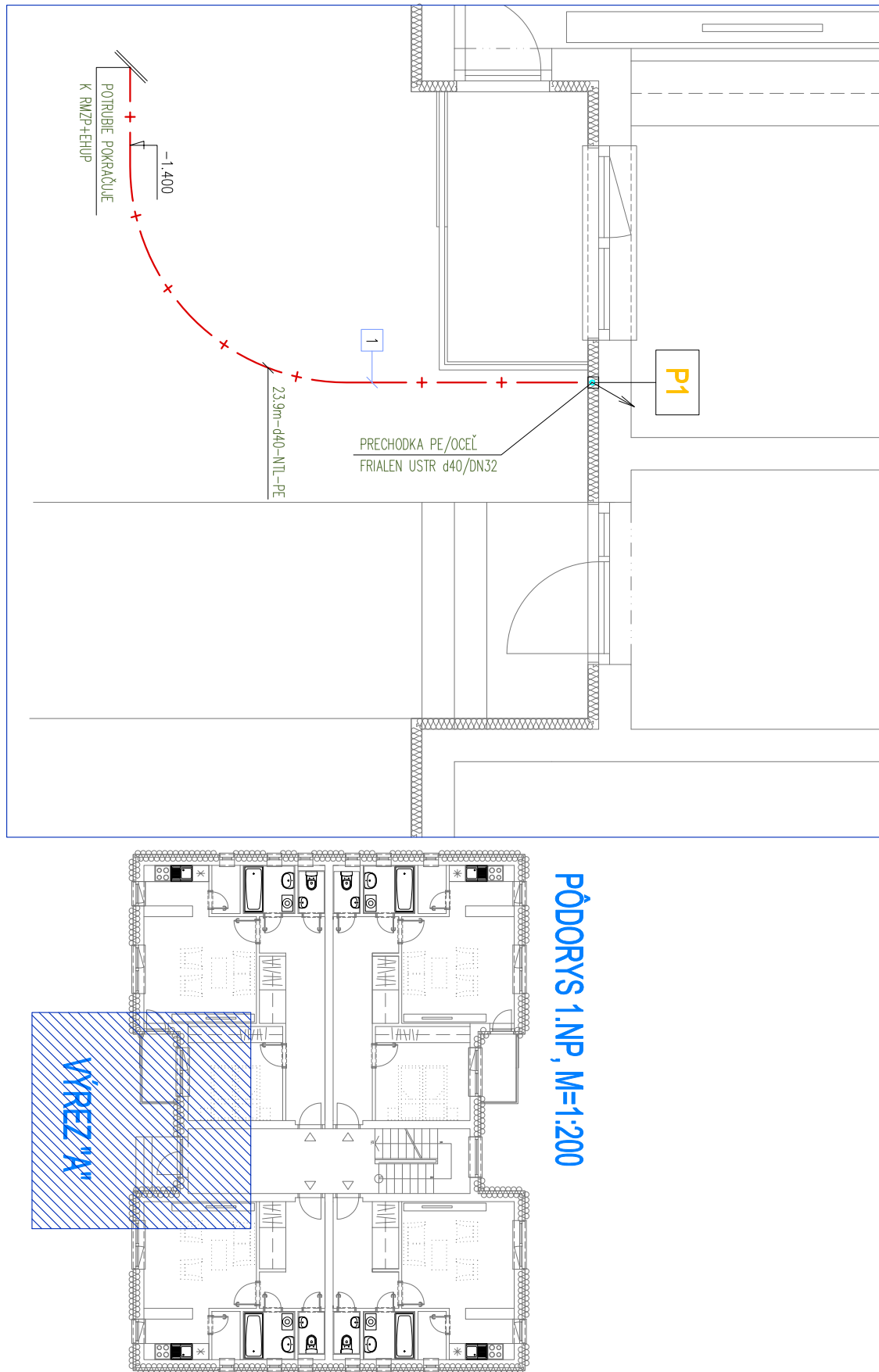
P&DORYS 1.NP, M=1:200



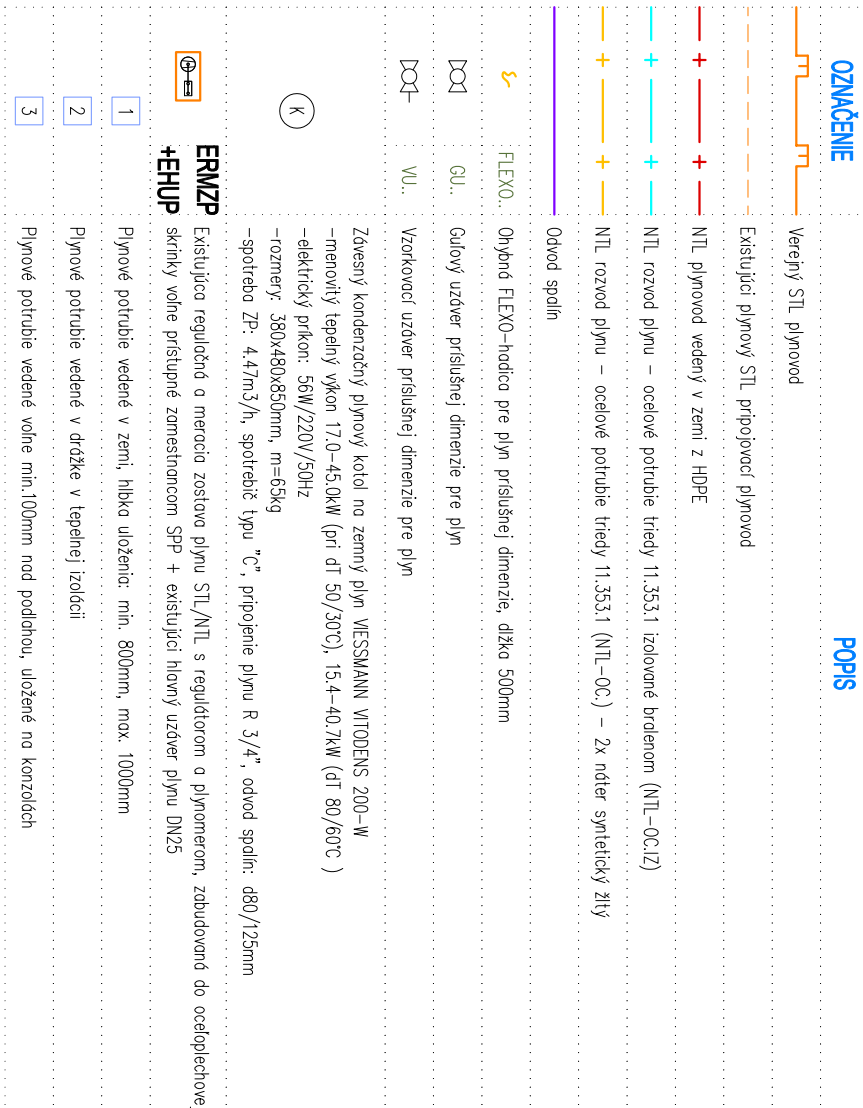
ВЫРЕЗ "А"



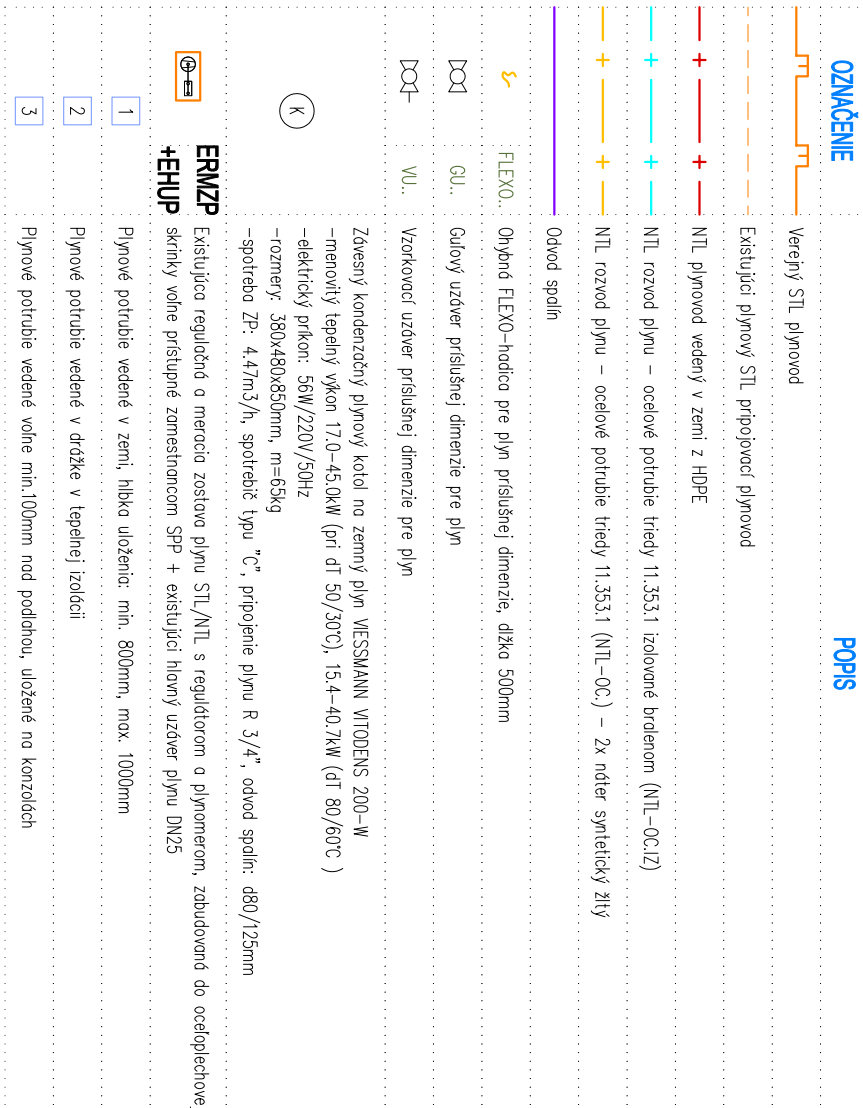
IZOMETRIA PLYNOVODU, $M=1:50$



PÓDORYS 1.NP-VÝREZ "A", M=1:50



LEGENDA



UPOZORNENIA:

- STAVBU A MONTÁŽ PLYNOMODU JE POTREBNÉ VYKONAŤ PODĽA STN EN 1775 A TYP 704 01

[illegible]