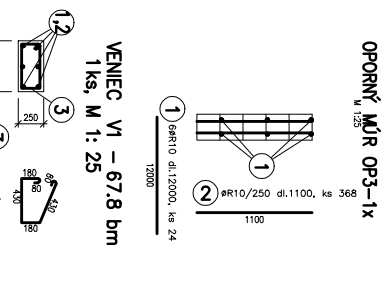
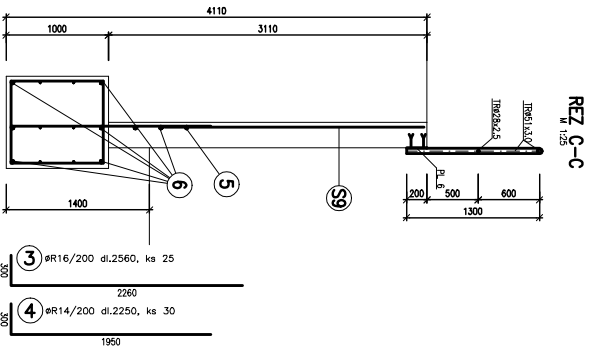
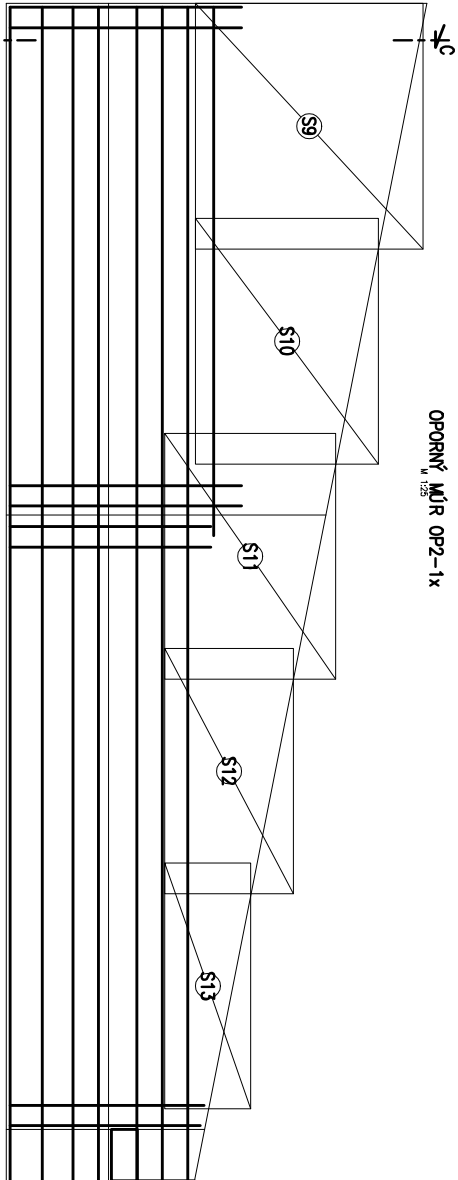


WZKZ SET		SCHEMATIC	#	DATA	VALUE	KS	GROUP	mg	FORMULA
SET	1	(mm)			[g]				
1	2400 x 460	6/8	164x150	21.93	18.45	1	164x150	SiH ₂ x H ₂ O x 14	
2	2400 x 460	6/8	164x150	21.93	18.45	1	164x150	SiH ₂ x H ₂ O x 14	
3	2400 x 460	6/8	164x150	21.93	18.45	1	164x150	SiH ₂ x H ₂ O x 14	
4	2400 x 460	6/8	164x150	21.93	18.45	1	164x150	SiH ₂ x H ₂ O x 14	
5	2400 x 460	6/8	164x150	21.93	18.45	1	164x150	SiH ₂ x H ₂ O x 14	
6	2400 x 460	6/8	164x150	21.93	18.45	1	164x150	SiH ₂ x H ₂ O x 14	
7	2400 x 460	6/8	164x150	21.93	18.45	1	164x150	SiH ₂ x H ₂ O x 14	
8	2400 x 460	6/8	164x150	21.93	18.45	1	164x150	SiH ₂ x H ₂ O x 14	
9	2400 x 460	6/8	164x150	21.93	18.45	1	164x150	SiH ₂ x H ₂ O x 14	
10	2400 x 460	6/8	164x150	21.93	18.45	1	164x150	SiH ₂ x H ₂ O x 14	
11	2400 x 460	6/8	164x150	21.93	18.45	1	164x150	SiH ₂ x H ₂ O x 14	
12	2400 x 460	6/8	164x150	21.93	18.45	1	164x150	SiH ₂ x H ₂ O x 14	
13	2400 x 460	6/8	164x150	21.93	18.45	1	164x150	SiH ₂ x H ₂ O x 14	
14	2400 x 460	6/8	164x150	21.93	18.45	1	164x150	SiH ₂ x H ₂ O x 14	
15	2400 x 460	6/8	164x150	21.93	18.45	1	164x150	SiH ₂ x H ₂ O x 14	
16	2400 x 460	6/8	164x150	21.93	18.45	1	164x150	SiH ₂ x H ₂ O x 14	
17	2400 x 460	6/8	164x150	21.93	18.45	1	164x150	SiH ₂ x H ₂ O x 14	
18	2400 x 460	6/8	164x150	21.93	18.45	1	164x150	SiH ₂ x H ₂ O x 14	
19	2400 x 460	6/8	164x150	21.93	18.45	1	164x150	SiH ₂ x H ₂ O x 14	
20	2400 x 460	6/8	164x150	21.93	18.45	1	164x150	SiH ₂ x H ₂ O x 14	
21	2400 x 460	6/8	164x150	21.93	18.45	1	164x150	SiH ₂ x H ₂ O x 14	
22	2400 x 460	6/8	164x150	21.93	18.45	1	164x150	SiH ₂ x H ₂ O x 14	
23	2400 x 460	6/8	164x150	21.93	18.45	1	164x150	SiH ₂ x H ₂ O x 14	
24	2400 x 460	6/8	164x150	21.93	18.45	1	164x150	SiH ₂ x H ₂ O x 14	
25	2400 x 460	6/8	164x150	21.93	18.45	1	164x150	SiH ₂ x H ₂ O x 14	
26	2400 x 460	6/8	164x150	21.93	18.45	1	164x150	SiH ₂ x H ₂ O x 14	
27	2400 x 460	6/8	164x150	21.93	18.45	1	164x150	SiH ₂ x H ₂ O x 14	
28	2400 x 460	6/8	164x150	21.93	18.45	1	164x150	SiH ₂ x H ₂ O x 14	
29	2400 x 460	6/8	164x150	21.93	18.45	1	164x150	SiH ₂ x H ₂ O x 14	
30	2400 x 460	6/8	164x150	21.93	18.45	1	164x150	SiH ₂ x H ₂ O x 14	
31	2400 x 460	6/8	164x150	21.93	18.45	1	164x150	SiH ₂ x H ₂ O x 14	
32	2400 x 460	6/8	164x150	21.93	18.45	1	164x150	SiH ₂ x H ₂ O x 14	
TOTAL							262.718		

WYAZ SECT									
WZL	SQUAD	#	DATA	WZL	KS	KSU	KS	KSU	KSUWAZ
57E	2400/100	8/8	1504/150	16/51	23,511	1	21,485	1	57E/100 KS-14
57	2400/140	8/8	1504/150	16/55	23,535	1	18,655	1	57E/140 KS-14
57	2400/160	8/8	1504/150	16/58	23,531	1	18,658	1	57E/160 KS-14
57	2400/180	8/8	1504/150	16/61	23,511	1	21,485	1	57E/180 KS-14
57	2400/180	8/8	1504/150	16/62	23,511	1	21,485	1	57E/180 KS-14
57	2400/180	8/8	1504/150	16/63	23,511	1	21,485	1	57E/180 KS-14
57	2400/200	8/8	1504/150	16/68	23,511	1	21,485	1	57E/200 KS-14
57	2400/215	8/8	1504/150	16/69	23,511	1	21,485	1	57E/215 KS-14
57	2400/215	8/8	1504/150	16/70	23,511	1	21,485	1	57E/215 KS-14
57	2400/215	8/8	1504/150	16/71	23,511	1	21,485	1	57E/215 KS-14
57	2400/215	8/8	1504/150	16/72	23,511	1	21,485	1	57E/215 KS-14
57	2400/215	8/8	1504/150	16/73	23,511	1	21,485	1	57E/215 KS-14
57	2400/215	8/8	1504/150	16/74	23,511	1	21,485	1	57E/215 KS-14
57	2400/215	8/8	1504/150	16/75	23,511	1	21,485	1	57E/215 KS-14
57	2400/215	8/8	1504/150	16/76	23,511	1	21,485	1	57E/215 KS-14
57	2400/215	8/8	1504/150	16/77	23,511	1	21,485	1	57E/215 KS-14
57	2400/215	8/8	1504/150	16/78	23,511	1	21,485	1	57E/215 KS-14
57	2400/215	8/8	1504/150	16/79	23,511	1	21,485	1	57E/215 KS-14
57	2400/215	8/8	1504/150	16/80	23,511	1	21,485	1	57E/215 KS-14
57	2400/215	8/8	1504/150	16/81	23,511	1	21,485	1	57E/215 KS-14
57	2400/215	8/8	1504/150	16/82	23,511	1	21,485	1	57E/215 KS-14
57	2400/215	8/8	1504/150	16/83	23,511	1	21,485	1	57E/215 KS-14
57	2400/215	8/8	1504/150	16/84	23,511	1	21,485	1	57E/215 KS-14
57	2400/215	8/8	1504/150	16/85	23,511	1	21,485	1	57E/215 KS-14
57	2400/215	8/8	1504/150	16/86	23,511	1	21,485	1	57E/215 KS-14
57	2400/215	8/8	1504/150	16/87	23,511	1	21,485	1	57E/215 KS-14
57	2400/215	8/8	1504/150	16/88	23,511	1	21,485	1	57E/215 KS-14
57	2400/215	8/8	1504/150	16/89	23,511	1	21,485	1	57E/215 KS-14
57	2400/215	8/8	1504/150	16/90	23,511	1	21,485	1	57E/215 KS-14
57	2400/215	8/8	1504/150	16/91	23,511	1	21,485	1	57E/215 KS-14
57	2400/215	8/8	1504/150	16/92	23,511	1	21,485	1	57E/215 KS-14
57	2400/215	8/8	1504/150	16/93	23,511	1	21,485	1	57E/215 KS-14
57	2400/215	8/8	1504/150	16/94	23,511	1	21,485	1	57E/215 KS-14
57	2400/215	8/8	1504/150	16/95	23,511	1	21,485	1	57E/215 KS-14
57	2400/215	8/8	1504/150	16/96	23,511	1	21,485	1	57E/215 KS-14
57	2400/215	8/8	1504/150	16/97	23,511	1	21,485	1	57E/215 KS-14
57	2400/215	8/8	1504/150	16/98	23,511	1	21,485	1	57E/215 KS-14
57	2400/215	8/8	1504/150	16/99	23,511	1	21,485	1	57E/215 KS-14
57	2400/215	8/8	1504/150	16/100	23,511	1	21,485	1	57E/215 KS-14
57	2400/215	8/8	1504/150	16/101	23,511	1	21,485	1	57E/215 KS-14
57	2400/215	8/8	1504/150	16/102	23,511	1	21,485	1	57E/215 KS-14
57	2400/215	8/8	1504/150	16/103	23,511	1	21,485	1	57E/215 KS-14
57	2400/215	8/8	1504/150	16/104	23,511	1	21,485	1	57E/215 KS-14
57	2400/215	8/8	1504/150	16/105	23,511	1	21,485	1	57E/215 KS-14
57	2400/215	8/8	1504/150	16/106	23,511	1	21,485	1	57E/215 KS-14
57	2400/215	8/8	1504/150	16/107	23,511	1	21,485	1	57E/215 KS-14
57	2400/215	8/8	1504/150	16/108	23,511	1	21,485	1	57E/215 KS-14
57	2400/215	8/8	1504/150	16/109	23,511	1	21,485	1	57E/215 KS-14
57	2400/215	8/8	1504/150	16/110	23,511	1	21,485	1	57E/215 KS-14
57	2400/215	8/8	1504/150	16/111	23,511	1	21,485	1	57E/215 KS-14
57	2400/215	8/8	1504/150	16/112	23,511	1	21,485	1	57E/215 KS-14
57	2400/215	8/8	1504/150	16/113	23,511	1	21,485	1	57E/215 KS-14
57	2400/215	8/8	1504/150	16/114	23,511	1	21,485	1	57E/215 KS-14
57	2400/215	8/8	1504/150	16/115	23,511	1	21,485	1	57E/215 KS-14
57	2400/215	8/8	1504/150	16/116	23,511	1	21,485	1	57E/215 KS-14
57	2400/215	8/8	1504/150	16/117	23,511	1	21,485	1	57E/215 KS-14
57	2400/215	8/8	1504/150	16/118	23,511	1	21,485	1	57E/215 KS-14
57	2400/215	8/8	1504/150	16/119	23,511	1	21,485	1	57E/215 KS-14
57	2400/215	8/8	1504/150	16/120	23,511	1	21,485	1	57E/215 KS-14
57	2400/215	8/8	1504/150	16/121	23,511	1	21,485	1	57E/215 KS-14
57	2400/215	8/8	1504/150	16/122	23,511	1	21,485	1	57E/215 KS-14
57	2400/215	8/8	1504/150	16/123	23,511	1	21,485	1	57E/215 KS-14
57	2400/215	8/8	1504/150	16/124	23,511	1	21,485	1	57E/215 KS-14
57	2400/215	8/8	1504/150	16/125	23,511	1	21,485	1	57E/215 KS-14
57	2400/215	8/8	1504/150	16/126	23,511	1	21,485	1	57E/215 KS-14
57	2400/215	8/8	1504/150	16/127	23,511	1	21,485	1	57E/215 KS-14
57	2400/215	8/8	1504/150	16/128	23,511	1	21,485	1	57E/215 KS-14
57	2400/215	8/8	1504/150	16/129	23,511	1	21,485	1	57E/215 KS-14
57	2400/215	8/8	1504/150	16/130	23,511	1	21,485	1	57E/215 KS-14
57	2400/215	8/8	1504/150	16/131	23,511	1	21,485	1	57E/215 KS-14
57	2400/215	8/8	1504/150	16/132	23,511	1	21,485	1	57E/215 KS-14
57	2400/215	8/8	1504/150	16/133	23,511	1	21,485	1	57E/215 KS-14
57	2400/215	8/8	1504/150	16/134	23,511	1	21,485	1	57E/215 KS-14
57	2400/215	8/8	1504/150	16/135	23,511	1	21,485	1	57E/215 KS-14
57	2400/215	8/8	1504/150	16/136	23,511	1	21,485	1	57E/215 KS-14
57	2400/215	8/8	1504/150	16/137	23,511	1	21,485	1	57E/215 KS-14
57	2400/215	8/8	1504/150	16/138	23,511	1	21,485	1	57E/215 KS-14
57	2400/215	8/8	1504/150	16/139	23,511	1	21,485	1	57E/215 KS-14
57	2400/215	8/8	1504/150	16/140	23,511	1	21,485	1	57E/215 KS-14
57	2400/215	8/8	1504/150	16/141	23,511	1	21,485	1	57E/215 KS-14
57	2400/215	8/8	1504/150	16/142	23,511	1	21,485	1	57E/215 KS-14
57	2400/215	8/8	1504/150	16/143	23,511	1	21,485	1	57E/215 KS-14
57	2400/215	8/8	1504/150	16/144	23,511	1	21,485	1	57E/215 KS-14
57	2400/215	8/8	1504/150	16/145	23,511	1	21,485	1	57E/215 KS-14
57	2400/215	8/8	1504/150	16/146	23,511	1	21,485	1	57E/215 KS-14
57	2400/215	8/8	1504/150	16/147	23,511	1	21,485	1	57E/215 KS-14
57	2400/215	8/8	1504/150	16/148	23,511	1	21,485	1	57E/215 KS-14
57	2400/215	8/8	1504/150	16/149	23,511	1	21,485	1	57E/215 KS-14
57	2400/215	8/8	1504/150	16/150	23,511	1	21,485	1	57E/215 KS-14
57	2400/215	8/8	1504/150	16/151	23,511	1	21,485	1	57E/215 KS-14
57	2400/215	8/8	1504/150	16/152	23,511	1	21,485	1	57E/215 KS-14
57	2400/215	8/8	1504/150	16/153	23,511	1	21,485	1	57E/215 KS-14
57	2400/215	8/8	1504/150	16/154	23,511	1	21,485	1	57E/215 KS-14
57	2400/215	8/8	1504/150	16/155	23,511	1	21,485	1	57E/215 KS-14
57	2400/215	8/8	1504/150	16/156	23,511	1	21,485	1	57E/215 KS-14
57	2400/215	8/8	1504/150	16/157	23,511	1	21,485	1	57E/215 KS-14
57	2400/215	8/8	1504/150	16/158	23,511	1	21,485	1	57E/215 KS-14
57	2400/215	8/8	1504/150	16/159	23,511	1	21,485	1	57E/215 KS-14
57	2400/215	8/8	1504/150	16/160	23,511	1	21,485	1	57E/215 KS-14
57	2400/215	8/8	1504/150	16/161	23,511	1	21,485	1	57E/215 KS-14
57	2400/215	8/8	1504/150	16/162	23,511	1	21,485	1	57E/215 KS-14
57	2400/215	8/8	1504/150	16/163	23,511	1	21,485	1	57E/215 KS-14
57	2400/215	8/8	1504/150	16/164	23,511	1	21,485	1	57E/215 KS-14
57	2400/215	8/8	1504/150	16/165	23,511	1	21,485	1	57E/215 KS-14
57	2400/215	8/8	1504/150	16/166	23,511	1	21,485	1	57E/215 KS-14
57	2400/215	8/8	1504/150	16/167	23,511	1	21,485	1	57E/215 KS-14
57	2400/215	8/8	1504/150	16/168	23,511	1	21,485	1	57E/215 KS-14
57	2400/215	8/8	1504/150	16/169	23,511	1	21,485	1	57E/215 KS-14
57	2400/215	8/8	1504/150	16/170	23,511	1	21,485	1	57E/215 KS-14
57	2400/215	8/8	1504/150	16/171	23,511	1	21,485	1	57E/215 KS-14
57	2400/215	8/8	1504/150	16/172	23,511	1	21,485	1	57E/215 KS-14
57	2400/215	8/8	1504/150	16/173	23,511	1	21,485	1	57E/215 KS-14
57	2400/215	8/8	1504/150	16/174	23,511	1	21,485	1	57E/215 KS-14
57	2400/215	8/8	1504/150	16/175	23,511	1	21,485	1	57E/215 KS-14
57	2400/215	8/8	1504/150	16/176	23,511	1	21,485	1	57E/215 KS-14
57	2400/215	8/8	1504/150	16/177	23,511	1	21,485	1	57E/215 KS-14
57	2400/215	8/8							



Profile	PSD	#	h	h ₂₀	h ₃₀	h ₄₀	h ₅₀	h ₆₀	h ₇₀	h ₈₀	h ₉₀	h ₁₀₀	h ₁₁₀	h ₁₂₀	h ₁₃₀	h ₁₄₀	h ₁₅₀	h ₁₆₀	h ₁₇₀	h ₁₈₀	h ₁₉₀	h ₂₀₀	h ₂₁₀	h ₂₂₀	h ₂₃₀	h ₂₄₀	h ₂₅₀	h ₂₆₀	h ₂₇₀	h ₂₈₀	h ₂₉₀	h ₃₀₀	h ₃₁₀	h ₃₂₀	h ₃₃₀	h ₃₄₀	h ₃₅₀	h ₃₆₀	h ₃₇₀	h ₃₈₀	h ₃₉₀	h ₄₀₀	h ₄₁₀	h ₄₂₀	h ₄₃₀	h ₄₄₀	h ₄₅₀	h ₄₆₀	h ₄₇₀	h ₄₈₀	h ₄₉₀	h ₅₀₀	h ₅₁₀	h ₅₂₀	h ₅₃₀	h ₅₄₀	h ₅₅₀	h ₅₆₀	h ₅₇₀	h ₅₈₀	h ₅₉₀	h ₆₀₀	h ₆₁₀	h ₆₂₀	h ₆₃₀	h ₆₄₀	h ₆₅₀	h ₆₆₀	h ₆₇₀	h ₆₈₀	h ₆₉₀	h ₇₀₀	h ₇₁₀	h ₇₂₀	h ₇₃₀	h ₇₄₀	h ₇₅₀	h ₇₆₀	h ₇₇₀	h ₇₈₀	h ₇₉₀	h ₈₀₀	h ₈₁₀	h ₈₂₀	h ₈₃₀	h ₈₄₀	h ₈₅₀	h ₈₆₀	h ₈₇₀	h ₈₈₀	h ₈₉₀	h ₉₀₀	h ₉₁₀	h ₉₂₀	h ₉₃₀	h ₉₄₀	h ₉₅₀	h ₉₆₀	h ₉₇₀	h ₉₈₀	h ₉₉₀	h ₁₀₀₀	h ₁₀₁₀	h ₁₀₂₀	h ₁₀₃₀	h ₁₀₄₀	h ₁₀₅₀	h ₁₀₆₀	h ₁₀₇₀	h ₁₀₈₀	h ₁₀₉₀	h ₁₁₀₀	h ₁₁₁₀	h ₁₁₂₀	h ₁₁₃₀	h ₁₁₄₀	h ₁₁₅₀	h ₁₁₆₀	h ₁₁₇₀	h ₁₁₈₀	h ₁₁₉₀	h ₁₂₀₀	h ₁₂₁₀	h ₁₂₂₀	h ₁₂₃₀	h ₁₂₄₀	h ₁₂₅₀	h ₁₂₆₀	h ₁₂₇₀	h ₁₂₈₀	h ₁₂₉₀	h ₁₃₀₀	h ₁₃₁₀	h ₁₃₂₀	h ₁₃₃₀	h ₁₃₄₀	h ₁₃₅₀	h ₁₃₆₀	h ₁₃₇₀	h ₁₃₈₀	h ₁₃₉₀	h ₁₄₀₀	h ₁₄₁₀	h ₁₄₂₀	h ₁₄₃₀	h ₁₄₄₀	h ₁₄₅₀	h ₁₄₆₀	h ₁₄₇₀	h ₁₄₈₀	h ₁₄₉₀	h ₁₅₀₀	h ₁₅₁₀	h ₁₅₂₀	h ₁₅₃₀	h ₁₅₄₀	h ₁₅₅₀	h ₁₅₆₀	h ₁₅₇₀	h ₁₅₈₀	h ₁₅₉₀	h ₁₆₀₀	h ₁₆₁₀	h ₁₆₂₀	h ₁₆₃₀	h ₁₆₄₀	h ₁₆₅₀	h ₁₆₆₀	h ₁₆₇₀	h ₁₆₈₀	h ₁₆₉₀	h ₁₇₀₀	h ₁₇₁₀	h ₁₇₂₀	h ₁₇₃₀	h ₁₇₄₀	h ₁₇₅₀	h ₁₇₆₀	h ₁₇₇₀	h ₁₇₈₀	h ₁₇₉₀	h ₁₈₀₀	h ₁₈₁₀	h ₁₈₂₀	h ₁₈₃₀	h ₁₈₄₀	h ₁₈₅₀	h ₁₈₆₀	h ₁₈₇₀	h ₁₈₈₀	h ₁₈₉₀	h ₁₉₀₀	h ₁₉₁₀	h ₁₉₂₀	h ₁₉₃₀	h ₁₉₄₀	h ₁₉₅₀	h ₁₉₆₀	h ₁₉₇₀	h ₁₉₈₀	h ₁₉₉₀	h ₂₀₀₀	h ₂₀₁₀	h ₂₀₂₀	h ₂₀₃₀	h ₂₀₄₀	h ₂₀₅₀	h ₂₀₆₀	h ₂₀₇₀	h ₂₀₈₀	h ₂₀₉₀	h ₂₁₀₀	h ₂₁₁₀	h ₂₁₂₀	h ₂₁₃₀	h ₂₁₄₀	h ₂₁₅₀	h ₂₁₆₀	h ₂₁₇₀	h ₂₁₈₀	h ₂₁₉₀	h ₂₂₀₀	h ₂₂₁₀	h ₂₂₂₀	h ₂₂₃₀	h ₂₂₄₀	h ₂₂₅₀	h ₂₂₆₀	h ₂₂₇₀	h ₂₂₈₀	h ₂₂₉₀	h ₂₃₀₀	h ₂₃₁₀	h ₂₃₂₀	h ₂₃₃₀	h ₂₃₄₀	h ₂₃₅₀	h ₂₃₆₀	h ₂₃₇₀	h ₂₃₈₀	h ₂₃₉₀	h ₂₄₀₀	h ₂₄₁₀	h ₂₄₂₀	h ₂₄₃₀	h ₂₄₄₀	h ₂₄₅₀	h ₂₄₆₀	h ₂₄₇₀	h ₂₄₈₀	h ₂₄₉₀	h ₂₅₀₀	h ₂₅₁₀	h ₂₅₂₀	h ₂₅₃₀	h ₂₅₄₀	h ₂₅₅₀	h ₂₅₆₀	h ₂₅₇₀	h ₂₅₈₀	h ₂₅₉₀	h ₂₆₀₀	h ₂₆₁₀	h ₂₆₂₀	h ₂₆₃₀	h ₂₆₄₀	h ₂₆₅₀	h ₂₆₆₀	h ₂₆₇₀	h ₂₆₈₀	h ₂₆₉₀	h ₂₇₀₀	h ₂₇₁₀	h ₂₇₂₀	h ₂₇₃₀	h ₂₇₄₀	h ₂₇₅₀	h ₂₇₆₀	h ₂₇₇₀	h ₂₇₈₀	h _{2790</}
---------	-----	---	---	-----------------	-----------------	-----------------	-----------------	-----------------	-----------------	-----------------	-----------------	------------------	------------------	------------------	------------------	------------------	------------------	------------------	------------------	------------------	------------------	------------------	------------------	------------------	------------------	------------------	------------------	------------------	------------------	------------------	------------------	------------------	------------------	------------------	------------------	------------------	------------------	------------------	------------------	------------------	------------------	------------------	------------------	------------------	------------------	------------------	------------------	------------------	------------------	------------------	------------------	------------------	------------------	------------------	------------------	------------------	------------------	------------------	------------------	------------------	------------------	------------------	------------------	------------------	------------------	------------------	------------------	------------------	------------------	------------------	------------------	------------------	------------------	------------------	------------------	------------------	------------------	------------------	------------------	------------------	------------------	------------------	------------------	------------------	------------------	------------------	------------------	------------------	------------------	------------------	------------------	------------------	------------------	------------------	------------------	------------------	------------------	------------------	------------------	------------------	------------------	-------------------	-------------------	-------------------	-------------------	-------------------	-------------------	-------------------	-------------------	-------------------	-------------------	-------------------	-------------------	-------------------	-------------------	-------------------	-------------------	-------------------	-------------------	-------------------	-------------------	-------------------	-------------------	-------------------	-------------------	-------------------	-------------------	-------------------	-------------------	-------------------	-------------------	-------------------	-------------------	-------------------	-------------------	-------------------	-------------------	-------------------	-------------------	-------------------	-------------------	-------------------	-------------------	-------------------	-------------------	-------------------	-------------------	-------------------	-------------------	-------------------	-------------------	-------------------	-------------------	-------------------	-------------------	-------------------	-------------------	-------------------	-------------------	-------------------	-------------------	-------------------	-------------------	-------------------	-------------------	-------------------	-------------------	-------------------	-------------------	-------------------	-------------------	-------------------	-------------------	-------------------	-------------------	-------------------	-------------------	-------------------	-------------------	-------------------	-------------------	-------------------	-------------------	-------------------	-------------------	-------------------	-------------------	-------------------	-------------------	-------------------	-------------------	-------------------	-------------------	-------------------	-------------------	-------------------	-------------------	-------------------	-------------------	-------------------	-------------------	-------------------	-------------------	-------------------	-------------------	-------------------	-------------------	-------------------	-------------------	-------------------	-------------------	-------------------	-------------------	-------------------	-------------------	-------------------	-------------------	-------------------	-------------------	-------------------	-------------------	-------------------	-------------------	-------------------	-------------------	-------------------	-------------------	-------------------	-------------------	-------------------	-------------------	-------------------	-------------------	-------------------	-------------------	-------------------	-------------------	-------------------	-------------------	-------------------	-------------------	-------------------	-------------------	-------------------	-------------------	-------------------	-------------------	-------------------	-------------------	-------------------	-------------------	-------------------	-------------------	-------------------	-------------------	-------------------	-------------------	-------------------	-------------------	-------------------	-------------------	-------------------	-------------------	-------------------	-------------------	-------------------	-------------------	-------------------	-------------------	-------------------	-------------------	-------------------	-------------------	-------------------	-------------------	-------------------	-------------------	-------------------	-------------------	-------------------	------------------------

ZODPOVEDNÝ PRŮVĚRNÍK:	MSc. BEOLO AČKO	STAVBAŘ
KONTROLA:	MSc. BEOLO AČKO	PROJEKT
INVESTOR:	MSc. VLADIMÍR PŠTROCH	
ČÍSLO PROJEKTU:	STAVBA	
STADIUM:		
OPORNÝ MÍR		
VÝKRES VÝSTUŽE OPORNÝCH MÍROV A VENKA		
PRŮMĚR: 2		

KRYTIE VŠUDE JE 40mm
BETÓN C25/30
OCEĽ 10 505(R),10 425(V),KARI SIET

K-BELCOR S.R.O.

KRESLIL:	ING. BELO KACO	PROJEKT
INVESTOR:	ING. VĽADIMÍR PASTOREK	
NÁZOV PROJEKTU:	STATIKA	
STADIUM:		
OPPOBYNÝ MŮR		
MERKY:	1:25	
FÓRMAT:	A4	
DÁTUM:	06/2015	

VÝKRES VÝSTUŽE OPORNÝCH MŮROV A VENKA

2