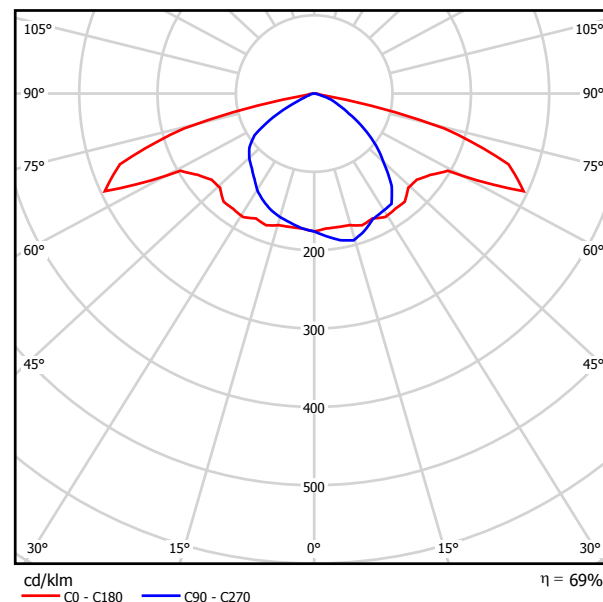


Operator Lightech s.r.o
 Telephone 02/63811070
 Fax
 e-Mail lightech@lightech.sk

SITECO 5NA551E1MS02 SR 50 / Luminaire Data Sheet



Luminous emittance 1:



Luminaire classification according to CIE: 100
 CIE flux code: 40 78 98 100 70

SR 50 - Street light
 upper housing and gear tray made of glas fibre reinforced polyester
 flat cover glass
 indiv. Position, LP 1, RP 1
 Glare limitation: KB1 Protection: IP 65

Lamp: 1 x HST 50W with CCG
 Luminous flux: 1 * 4400 lm

Due to missing symmetry properties, no UGR table
 can be displayed for this luminaire.

Operator Lightech s.r.o
 Telephone 02/63811070
 Fax
 e-Mail lightech@lightech.sk

RSB/50,RSB/50B / Planning data

Výpočet platný pre všetky komunikácie triedy ME6

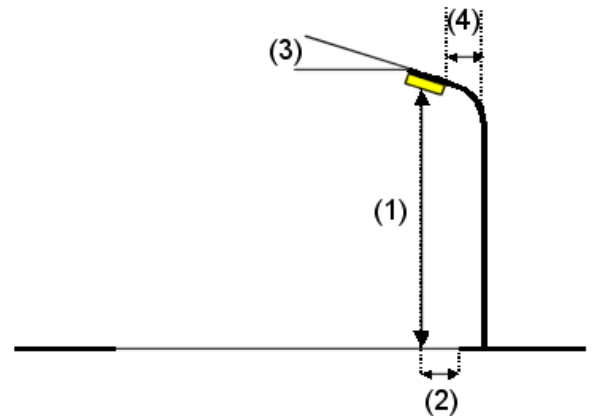
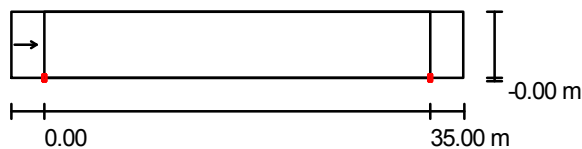
ulica - c.3
 ulica - c.4
 ulica - c.5
 ulica - c.6
 ulica - c.7
 ulica - c.8
 ulica - c.9
 ulica - c.10

Street Profile

RSB/50 (Width: 6.000 m, Number of lanes: 1, tarmac: R3, q0: 0.070)

Light loss factor: 0.75

Luminaire Arrangements



Luminaire: SITECO 5NA551E1MS02 SR 50

Luminaire Luminous Flux: 4400 lm

Luminaire Wattage: 66.0 W

Arrangement: Single row, bottom

Pole Distance: 35.000 m

Mounting Height (1): 7.500 m

Height: 7.696 m

Overhang (2): -0.021 m

Boom Angle (3): 5.0 °

Boom Length (4): 0.500 m

Maximum luminous intensities

at 70°: 356 cd/klm

at 80°: 25 cd/klm

at 90°: 2.05 cd/klm

Any direction forming the specified angle from the downward vertical, with the luminaire installed for use.

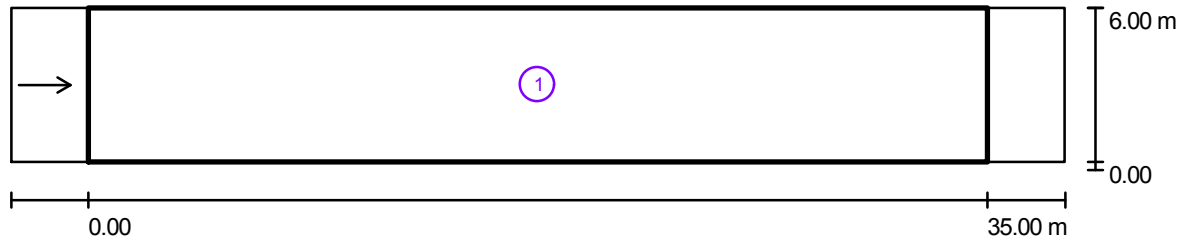
No luminous intensities above 95°.

Arrangement complies with luminous intensity class G4.

Arrangement complies with glare index class D.6.

Operator Lightech s.r.o.
 Telephone 02/63811070
 Fax
 e-Mail lightech@lightech.sk

RSB/50,RSB/50B / Photometric Results



Light loss factor: 0.75

Scale 1:294

Calculation Field List

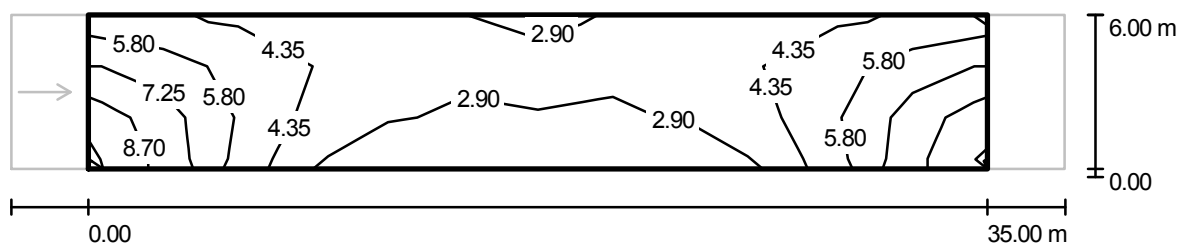
- 1 Valuation Field RSB/50
 Length: 35.000 m, Width: 6.000 m
 Grid: 12 x 3 Points
 Accompanying Street Elements: RSB/50.
 tarmac: R3, q0: 0.070
 Selected Lighting Class: ME6

(All lighting performance requirements are met.)

	L_{av} [cd/m ²]	U0	UI	TI [%]	SR
Calculated values:	0.3	0.48	0.5	10	0.6
Required values according to class:	≥ 0.3	≥ 0.35	≥ 0.4	≤ 15	/
Fulfilled/Not fulfilled:	✓	✓	✓	✓	✓

Operator Lightech s.r.o
 Telephone 02/63811070
 Fax
 e-Mail lightech@lightech.sk

RSB/50,RSB/50B / Valuation Field RSB/50 / Isolines (E)



Values in Lux, Scale 1 : 294

Grid: 12 x 3 Points

E_{av} [lx]
4.64

E_{min} [lx]
2.05

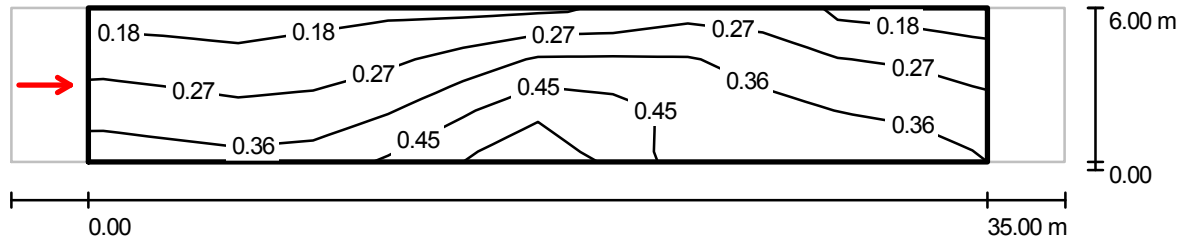
E_{max} [lx]
9.31

u_0
0.443

E_{min} / E_{max}
0.221

Operator Lightech s.r.o
 Telephone 02/63811070
 Fax
 e-Mail lightech@lightech.sk

RSB/50,RSB/50B / Valuation Field RSB/50 / Observer 1 / Isolines (L)



Values in Candela/m², Scale 1 : 294

Grid: 12 x 3 Points

Observer Position: (-60.000 m, 3.000 m, 1.500 m)

tarmac: R3, q0: 0.070

	L_{av} [cd/m ²]	U0	UI	TI [%]
Calculated values:	0.3	0.48	0.5	10
Required values according to class ME6:	≥ 0.3	≥ 0.35	≥ 0.4	≤ 15
Fulfilled/Not fulfilled:	✓	✓	✓	✓