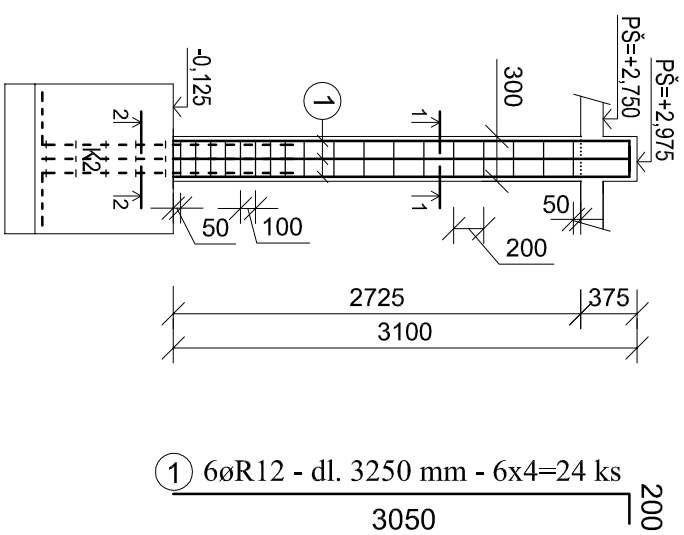
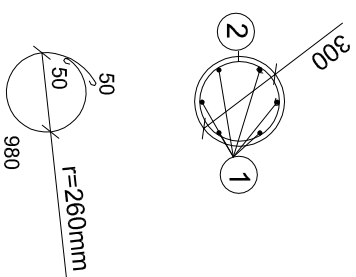


S10 - 4 ks



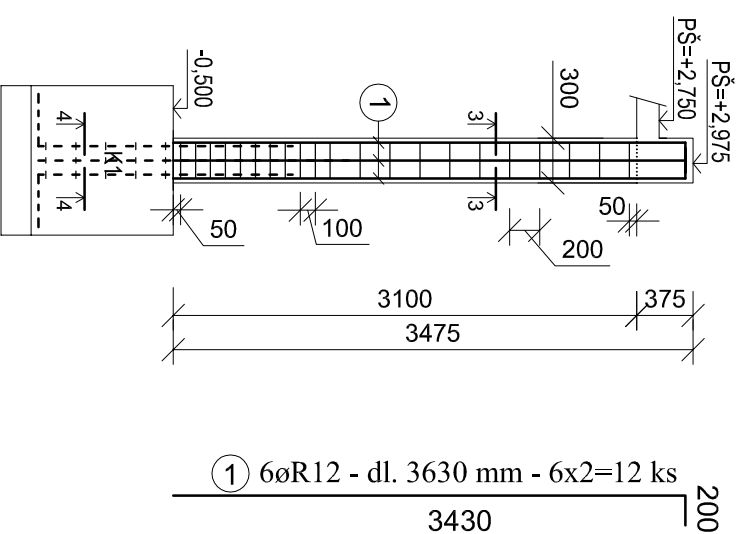
- ②  $\varnothing R6$  - dl. 1080 mm -  $18 \times 4 = 72$  ks -  $a = 200$  mm,  $a = 100$  mm

REZ 1-1



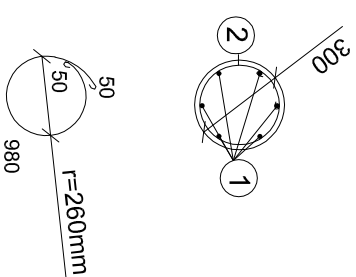
- ② ØR6 - dl. 1080 mm - 18x4=72 ks - a=200 mm, a=100 mm

S11 - 2ks



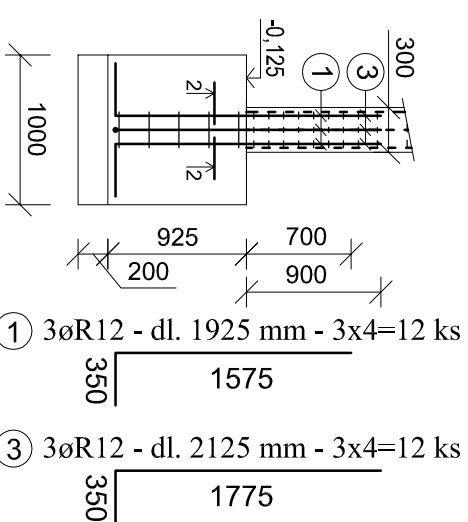
- 2  $\phi R6$  - dl. 1080 mm - 21 x 2=42 ks - a=200 mm, a=100 mm

## REN 3-3



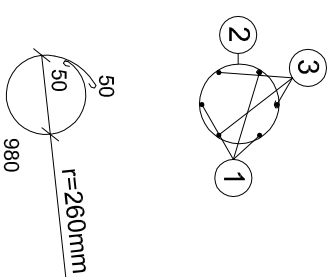
- 2 ØR6 - dl. 1080 mm - 21x2=42 ks - a=200 mm, a=100 mm

K2-KOTVENIE  
STLPA S10 - 4  
ks



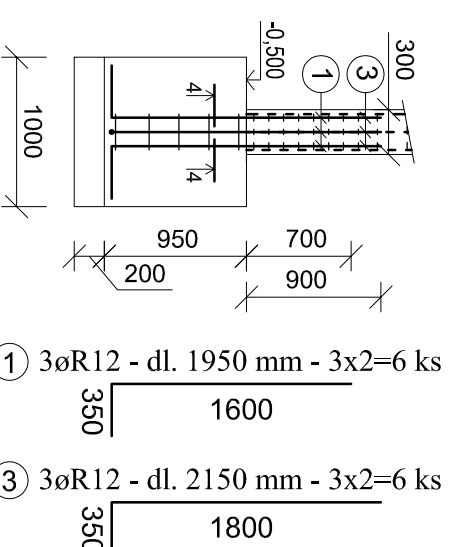
- ③ 3øR12 - dl. 1925 mm - 3x4=12 ks  
 350 | 1575
- ③ 3øR12 - dl. 2125 mm - 3x4=12 ks  
 350 | 1775

REZ 2-2



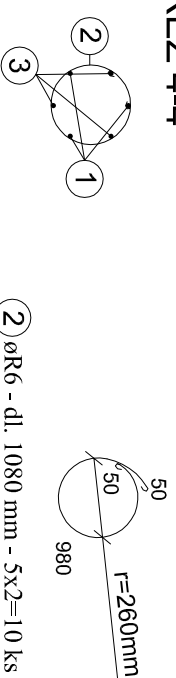
- ② ØR6 - dl. 1080 mm - 5x4=20 ks - a=200 mm

K1 - KOTVENIE  
STLPA S11 - 2  
ks



- ③ 3øR12 - dl. 1950 mm - 3x2=6 ks  
350 | 1600
- ③ 3øR12 - dl. 2150 mm - 3x2=6 ks  
350 | 1800

## REZ 4-4



- ② øR6 - dl. 1080 mm - 5x2=10 ks - a=200 mm

BETÓN : C16/20

VÝSTUŽ : R 10 505

dimenzované podľa STN EN 1992-1-1

Vypracoval:	Zodp.projektant:
Ing. Martin Morton	Ing. Martin Muranský
Investor :	Obec Ruská Poruba
Miesto stavby :	Ruská Poruba
Stavba:	DOM SMÚTKU
	M 1:50
Objekt :	V.č.: 2