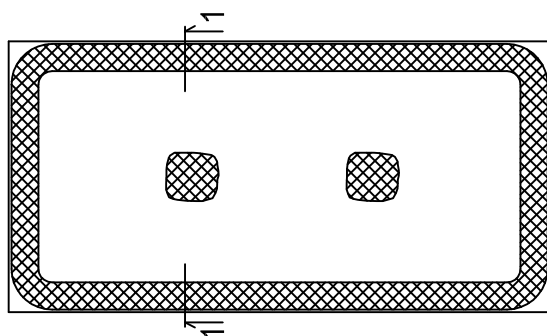
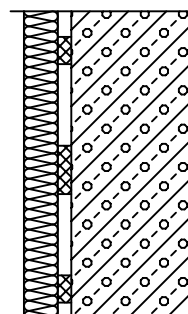


DETAIL 9: NANÁŠANIE LEPIACEJ MALTY NA IZOLAČNÉ PLATNE

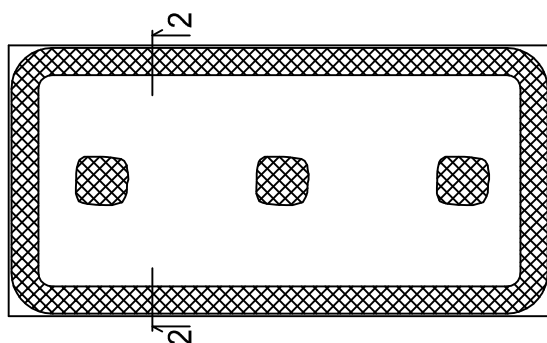
a) výška budovy do 22,5 m



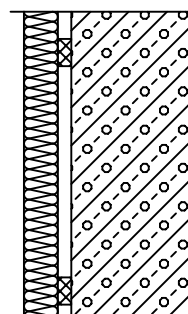
REZ 1-1



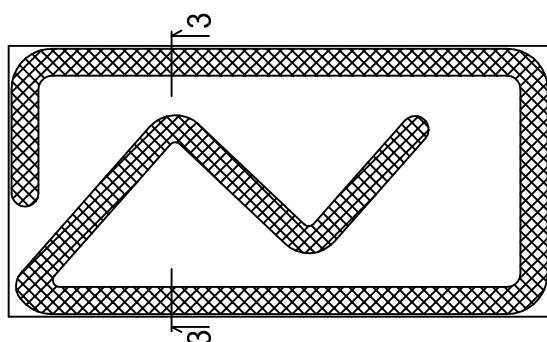
b) výška budovy nad 22,5 m



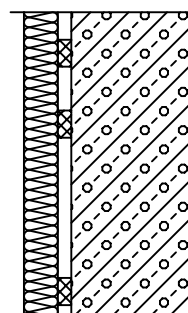
REZ 2-2



c) strojne



REZ 3-3



POZNÁMKA :

NEPLATÍ PRE KOLMO ORIENTOVANÉ VLÁKNO LAMELY Z MINERÁLNEJ VLNY !