

SVETELNOTECHNICKÁ ŠTÚDIA VO OBCE LIPTOVSKÁ LUŽNÁ

MODERNIZÁCIA VEREJNÉHO OSVETLENIA OBCE LIPTOVSKÁ LUŽNÁ

Partner for Contact:
Order No.:
Company:
Customer No.:

Date: 24.08.2015
Operator: OBEC LIPTOVSKÁ LUŽNÁ

Operator OBEC LIPTOVSKÁ LUŽNÁ
Telephone
Fax
e-Mail

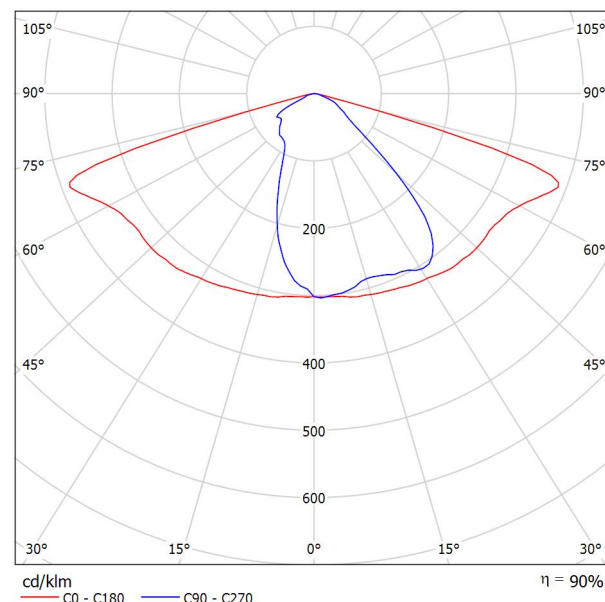
Table of contents

SVETELNOTECHNICKÁ ŠTÚDIA VO OBCE LIPTOVSKÁ LUŽNÁ	
Project Cover	1
Table of contents	2
PHILIPS BGP381 1xGRN35/830 DM	
Luminaire Data Sheet	3
RSB/L1, RSB/L1B, RSB/L1/NAD - ME6	
Luminaire parts list	4
Valuation Fields	
Vyhodnocovací pole Vozovka 1	
Observer	
Pozorovatel 1	
Isolines (L)	5
Pozorovatel 2	
Isolines (L)	6

Operator OBEC LIPTOVSKÁ LUŽNÁ
 Telephone
 Fax
 e-Mail

PHILIPS BGP381 1xGRN35/830 DM / Luminaire Data Sheet

Luminous emittance 1:



Luminaire classification according to CIE: 100
 CIE flux code: 44 77 98 100 90

Iridium gen3 – The connected intelligent 'plug & play' road luminaire
 Iridium gen3 is the first truly intelligent luminaire designed for seamless connectivity. No hassle in commissioning – just install the luminaire and control it from a distance through CityTouch management software. Remote light management made easy! The new 'plug & play' concept has been designed to ensure safe and easy installation in just three steps: 1. Install the spigot, 2. Plug in the mains, 3. Tilt and close the luminaire. The luminaire's high efficiency at system level ensures significant energy savings compared to existing conventional installations, offering a fast payback. Thanks to its wide

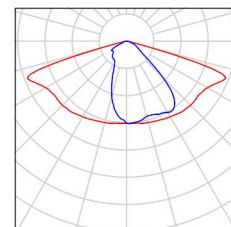
choice of lumen packages, optics and color temperatures, Iridium gen3 fits most applications in residential areas. The luminaire's neo-classical design guarantees a consistent look and feel for your surroundings

Due to missing symmetry properties, no UGR table can be displayed for this luminaire.

Operator OBEC LIPTOVSKÁ LUŽNÁ
Telephone
Fax
e-Mail

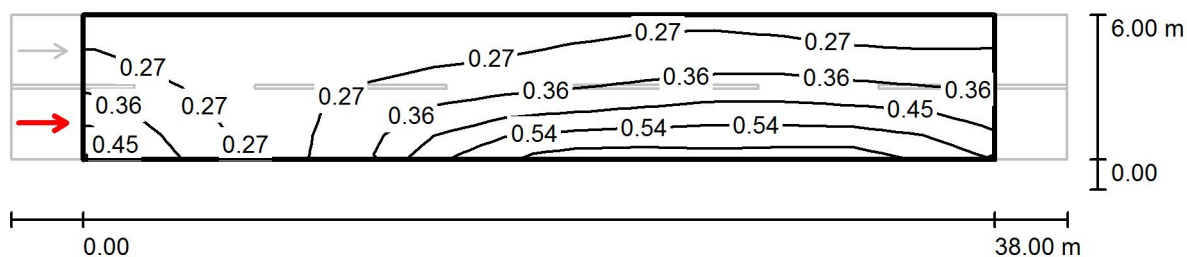
RSB/L1, RSB/L1B, RSB/L1/NAD - ME6 / Luminaire parts list

PHILIPS BGP381 1xGRN35/830 DM
Article No.:
Luminous flux (Luminaire): 3186 lm
Luminous flux (Lamps): 3540 lm
Luminaire Wattage: 30.1 W
Luminaire classification according to CIE: 100
CIE flux code: 44 77 98 100 90
Fitting: 1 x GRN35/830/- (Correction Factor
1.000).



Operator OBEC LIPTOVSKÁ LUŽNÁ
 Telephone
 Fax
 e-Mail

RSB/L1, RSB/L1B, RSB/L1/NAD - ME6 / Vyhodnocovací pole Vozovka 1 / Pozorovatel 1 / Isolines (L)



Values in Candela/m², Scale 1 : 315

Grid: 13 x 6 Points

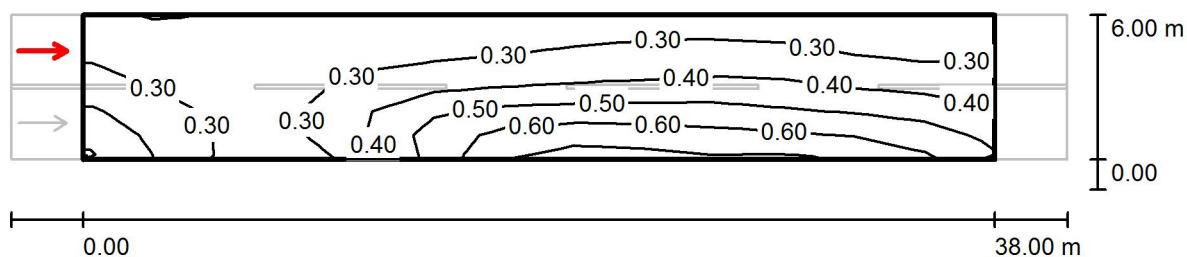
Observer Position: (-60.000 m, 1.500 m, 1.500 m)

tarmac: R3, q0: 0.070

	L_{av} [cd/m ²]	U0	UI	TI [%]
Calculated values:	0.35	0.57	0.44	15
Required values according to class ME6:	≥ 0.30	≥ 0.35	≥ 0.40	≤ 15
Fulfilled/Not fulfilled:	✓	✓	✓	✓

Operator OBEC LIPTOVSKÁ LUŽNÁ
 Telephone
 Fax
 e-Mail

**RSB/L1, RSB/L1B, RSB/L1/NAD - ME6 / Vyhodnocovací pole Vozovka 1 / Pozorovatel
 2 / Isolines (L)**



Values in Candela/m², Scale 1 : 315

Grid: 13 x 6 Points

Observer Position: (-60.000 m, 4.500 m, 1.500 m)

tarmac: R3, q0: 0.070

	L_{av} [cd/m ²]	U0	UI	TI [%]
Calculated values:	0.38	0.53	0.69	11
Required values according to class ME6:	≥ 0.30	≥ 0.35	≥ 0.40	≤ 15
Fulfilled/Not fulfilled:	✓	✓	✓	✓