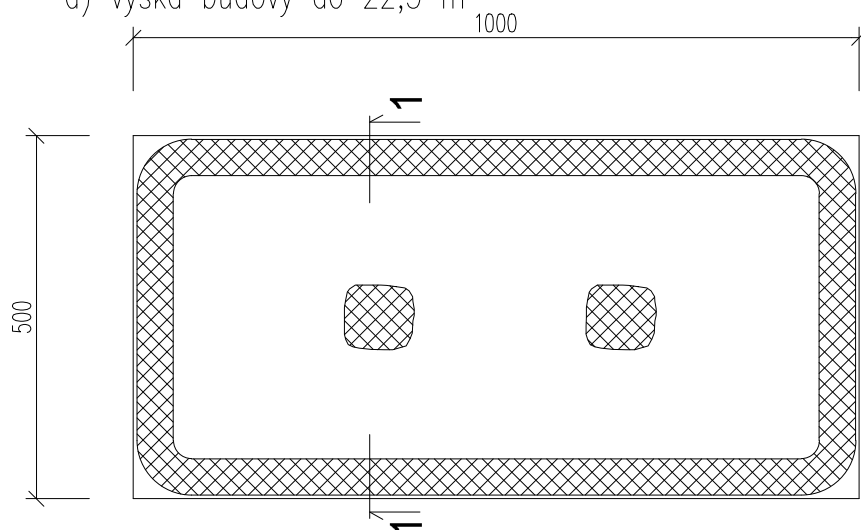
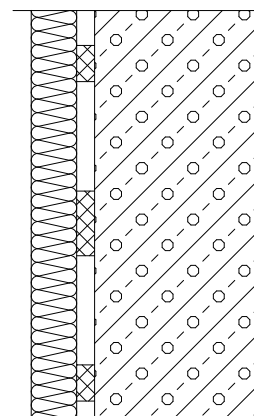




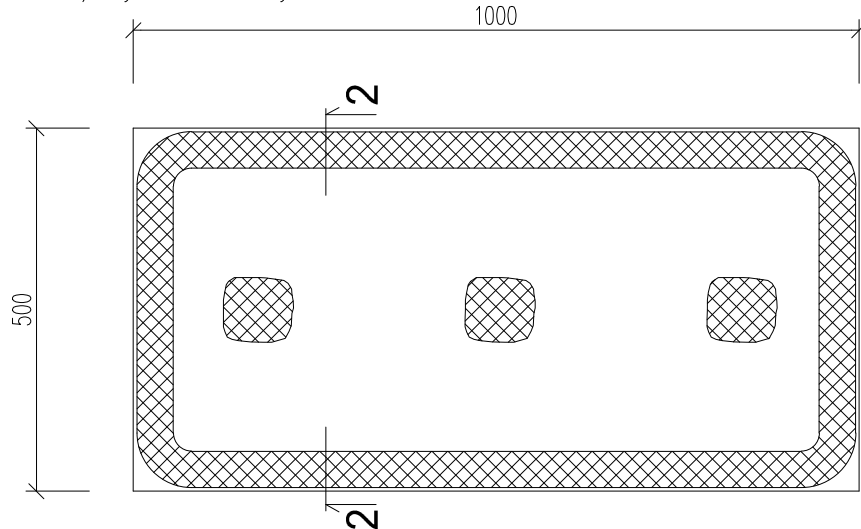
a) výška budovy do 22,5 m



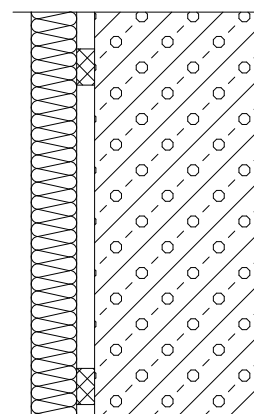
REZ 1-1



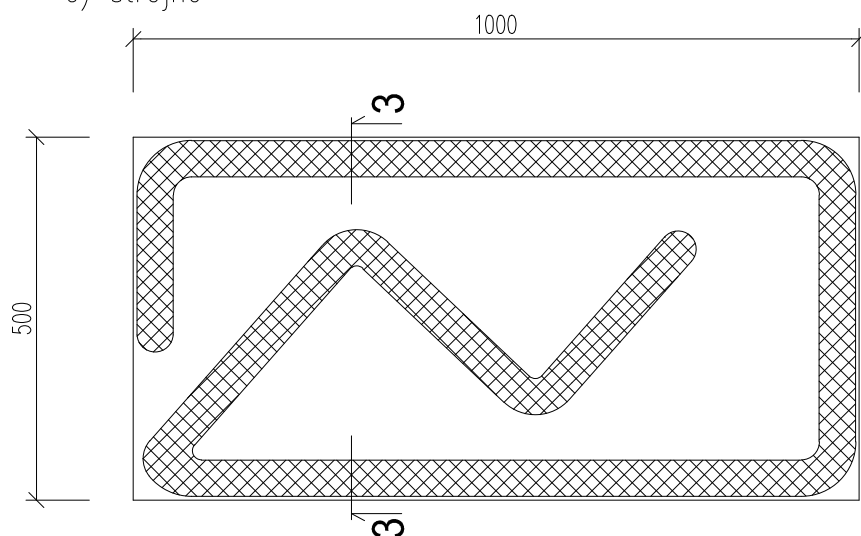
b) výška budovy nad 22,5 m



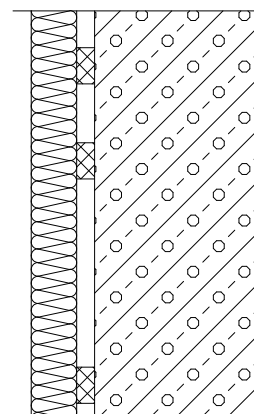
REZ 2-2



c) strojne



REZ 3-3



POZNÁMKA :

PLATÍ PRE IZOLAČNÉ PLATNE : expandovaný polystyrén  
extrudovaný polystyrén

LEPIACA STIERKA PRE KONTAKTNÝ ZATEPLOVACÍ SYSTÉM