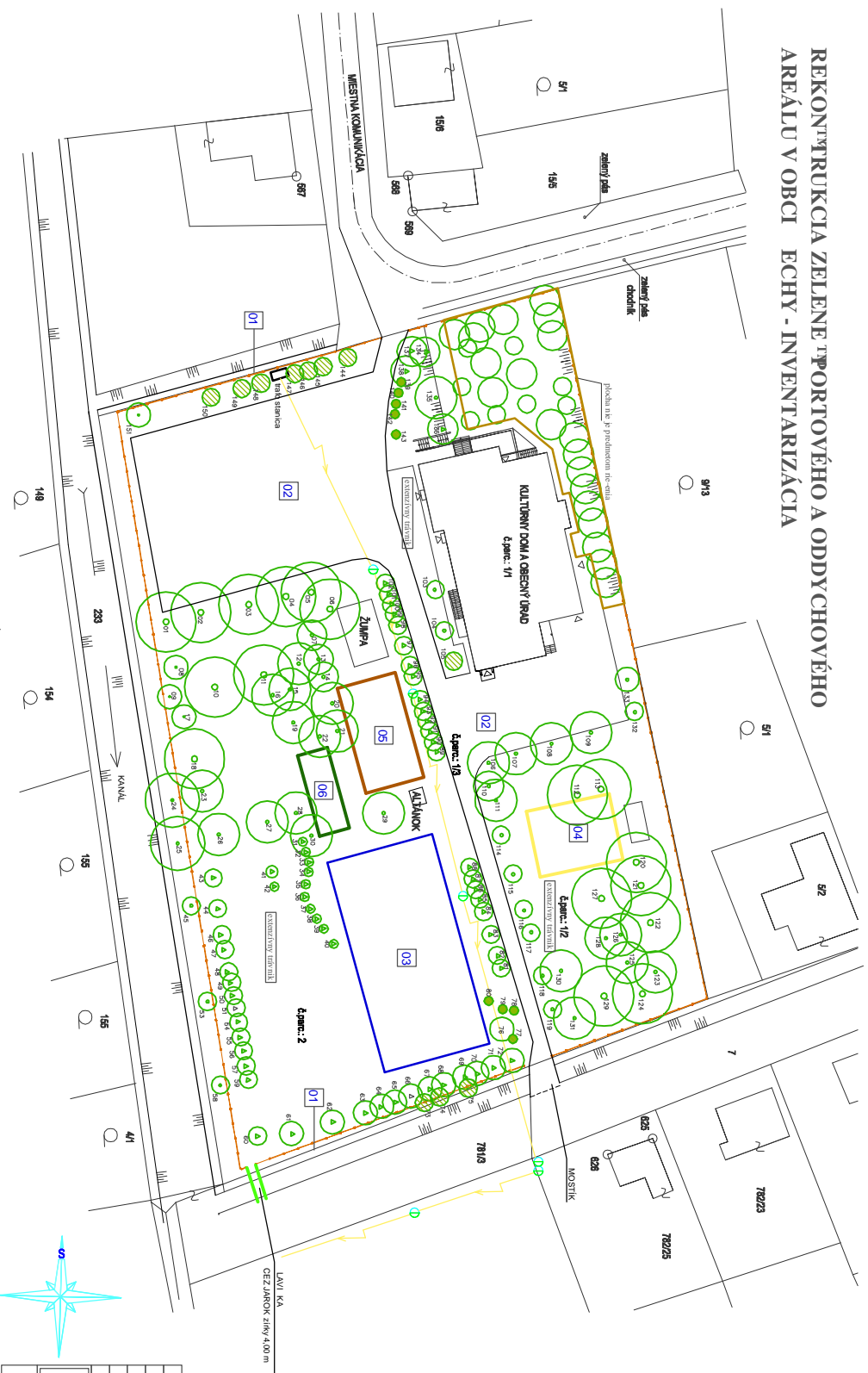






# REKONSTRUKCIA ZELENEJ PORTOVÉHO A ODDYCHOVÉHO AREÁLU V OBCI ECHY - INVENTARIZÁCIA



## Zoznam existujúcich drevín - inventarizácia

- |    |              |     |                |     |                |
|----|--------------|-----|----------------|-----|----------------|
| 01 | Penjaja ahli | 51  | Thaja wacandha | 901 | Thaja wacandha |
| 02 | Penjaja ahli | 52  | Thaja wacandha | 902 | Thaja wacandha |
| 03 | Penjaja ahli | 53  | Thaja wacandha | 903 | Thaja wacandha |
| 04 | Penjaja ahli | 54  | Thaja wacandha | 904 | Thaja wacandha |
| 05 | Penjaja ahli | 55  | Thaja wacandha | 905 | Thaja wacandha |
| 06 | Penjaja ahli | 56  | Thaja wacandha | 906 | Thaja wacandha |
| 07 | Penjaja ahli | 57  | Thaja wacandha | 907 | Thaja wacandha |
| 08 | Penjaja ahli | 58  | Thaja wacandha | 908 | Thaja wacandha |
| 09 | Penjaja ahli | 59  | Thaja wacandha | 909 | Thaja wacandha |
| 10 | Penjaja ahli | 60  | Thaja wacandha | 910 | Thaja wacandha |
| 11 | Penjaja ahli | 61  | Thaja wacandha | 911 | Thaja wacandha |
| 12 | Penjaja ahli | 62  | Thaja wacandha | 912 | Thaja wacandha |
| 13 | Penjaja ahli | 63  | Thaja wacandha | 913 | Thaja wacandha |
| 14 | Penjaja ahli | 64  | Thaja wacandha | 914 | Thaja wacandha |
| 15 | Penjaja ahli | 65  | Thaja wacandha | 915 | Thaja wacandha |
| 16 | Penjaja ahli | 66  | Thaja wacandha | 916 | Thaja wacandha |
| 17 | Penjaja ahli | 67  | Thaja wacandha | 917 | Thaja wacandha |
| 18 | Penjaja ahli | 68  | Thaja wacandha | 918 | Thaja wacandha |
| 19 | Penjaja ahli | 69  | Thaja wacandha | 919 | Thaja wacandha |
| 20 | Penjaja ahli | 70  | Thaja wacandha | 920 | Thaja wacandha |
| 21 | Penjaja ahli | 71  | Thaja wacandha | 921 | Thaja wacandha |
| 22 | Penjaja ahli | 72  | Thaja wacandha | 922 | Thaja wacandha |
| 23 | Penjaja ahli | 73  | Thaja wacandha | 923 | Thaja wacandha |
| 24 | Penjaja ahli | 74  | Thaja wacandha | 924 | Thaja wacandha |
| 25 | Penjaja ahli | 75  | Thaja wacandha | 925 | Thaja wacandha |
| 26 | Penjaja ahli | 76  | Thaja wacandha | 926 | Thaja wacandha |
| 27 | Penjaja ahli | 77  | Thaja wacandha | 927 | Thaja wacandha |
| 28 | Penjaja ahli | 78  | Thaja wacandha | 928 | Thaja wacandha |
| 29 | Penjaja ahli | 79  | Thaja wacandha | 929 | Thaja wacandha |
| 30 | Penjaja ahli | 80  | Thaja wacandha | 930 | Thaja wacandha |
| 31 | Penjaja ahli | 81  | Thaja wacandha | 931 | Thaja wacandha |
| 32 | Penjaja ahli | 82  | Thaja wacandha | 932 | Thaja wacandha |
| 33 | Penjaja ahli | 83  | Thaja wacandha | 933 | Thaja wacandha |
| 34 | Penjaja ahli | 84  | Thaja wacandha | 934 | Thaja wacandha |
| 35 | Penjaja ahli | 85  | Thaja wacandha | 935 | Thaja wacandha |
| 36 | Penjaja ahli | 86  | Thaja wacandha | 936 | Thaja wacandha |
| 37 | Penjaja ahli | 87  | Thaja wacandha | 937 | Thaja wacandha |
| 38 | Penjaja ahli | 88  | Thaja wacandha | 938 | Thaja wacandha |
| 39 | Penjaja ahli | 89  | Thaja wacandha | 939 | Thaja wacandha |
| 40 | Penjaja ahli | 90  | Thaja wacandha | 940 | Thaja wacandha |
| 41 | Penjaja ahli | 91  | Thaja wacandha | 941 | Thaja wacandha |
| 42 | Penjaja ahli | 92  | Thaja wacandha | 942 | Thaja wacandha |
| 43 | Penjaja ahli | 93  | Thaja wacandha | 943 | Thaja wacandha |
| 44 | Penjaja ahli | 94  | Thaja wacandha | 944 | Thaja wacandha |
| 45 | Penjaja ahli | 95  | Thaja wacandha | 945 | Thaja wacandha |
| 46 | Penjaja ahli | 96  | Thaja wacandha | 946 | Thaja wacandha |
| 47 | Penjaja ahli | 97  | Thaja wacandha | 947 | Thaja wacandha |
| 48 | Penjaja ahli | 98  | Thaja wacandha | 948 | Thaja wacandha |
| 49 | Penjaja ahli | 99  | Thaja wacandha | 949 | Thaja wacandha |
| 50 | Penjaja ahli | 100 | Thaja wacandha | 950 | Thaja wacandha |

**LEGENDA:**

- 
 NN ELEKTRICKÉ VEDENIE VZDUŠNÉ
- 
 LISTNATÝ STROM
- 
 IHLI NATÝ STROM
- 
 KRY A OSTATNÝ PORAST

## OBJEKTOVÁ SKLADBA

- 01 OPLOTENIE  
02 VNÚTROREKĽOVÁ CESTA A PLOCHANA SPOLO ENSKÉ AKTIVITY  
03 TENISOVÉ IHRSKO  
04 NOHEBALOVÉ IHRSKO  
05 DEJSKÉ IHRSKO  
06 PETANCOVÉ IHRSKO

# PROJEKTOVÁ DOKUMENTÁCIA NA STAVEBNÉ POVLENIE

ZODP PROJEKTANT	VEREJNOSŤ: KRESLIL	
ING. TAVOLSKÝ/VOJÁČAL	ING. LOSKÁ F.	ING. LOSKÁ F.
INVESTOR:	OBEC ECHY	
Miesto:	ECHY, prst. 1, 2, 13, 2	
NÁZOV STAVBY: REKONŠTRUKCIA "PORTOVÉHO A ODDYCHOVÉHO AREÁLU V OBCI ECHY OBJEKT: SO-08.SADVOVNÉ PRÁVY		
OSAHÁ:		
<b>SITUÁCIA - INVENTARIZÁCIA</b>		
MIŠKA:	1:500	VERZIE: A/01