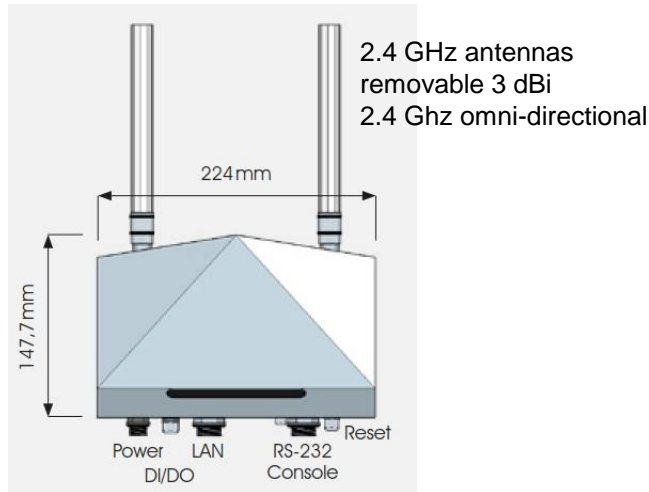


COMPOtemp Access Point

Access Point AP V4.0



Access Point AP V4.0

The AP V4.0 receives data from radio temperature measuring probes and transmits this data to a control system (e.g. PLC or PC).

- Management of up to 250 measuring probes
- Power supply 12 to 48 VDC 1 measuring point (TML1)
- Communication via WLAN
- transmission range up to 200 m in open areas, depending on local conditions
- WEP encryption and HTTPS support
- Diagnostic functions in the web interface
- solid and high quality housing

Accessories:

- Bracket for wall mounting
- Web-based configuration software

V 4.0

Interfaces	Ethernet standards	Power supply	Protection class	frequency	Operation temperature	weight
1 x Ethernet Port RJ45 1 X Serial Port RS-232	Up to IEEE 802.3ab for 1000BaseT(X)	0,64 A @ 12 VDC 0,16 A @ 48 VDC	IP 68	IEEE802.11 on 2.4 GHz	-40 °C to +75 °C Humidity (not condensing): 5 - 95%	~ 1,4 kg