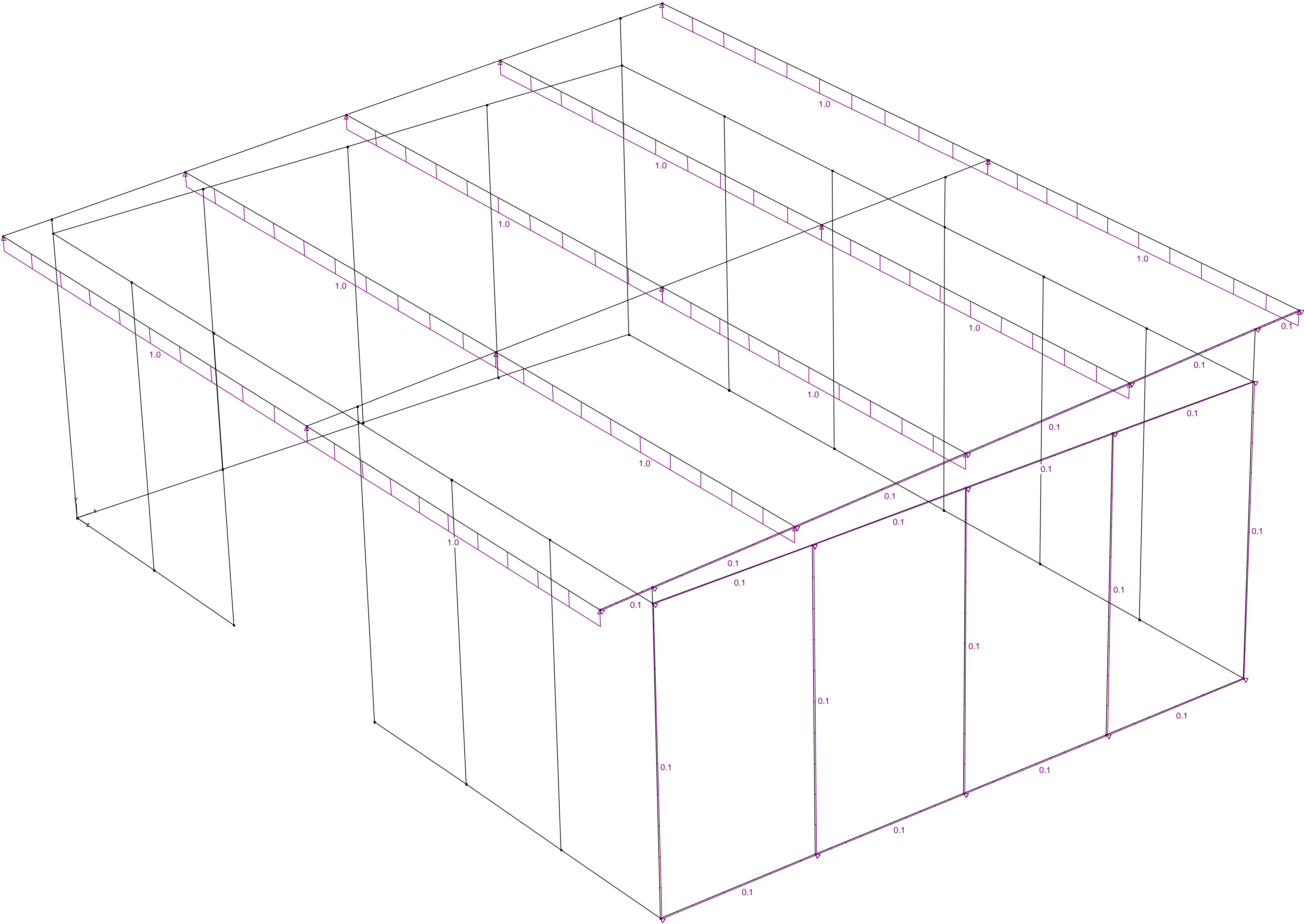
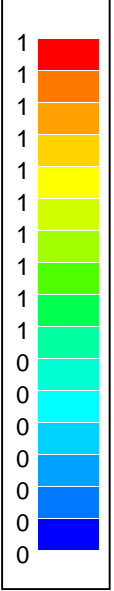
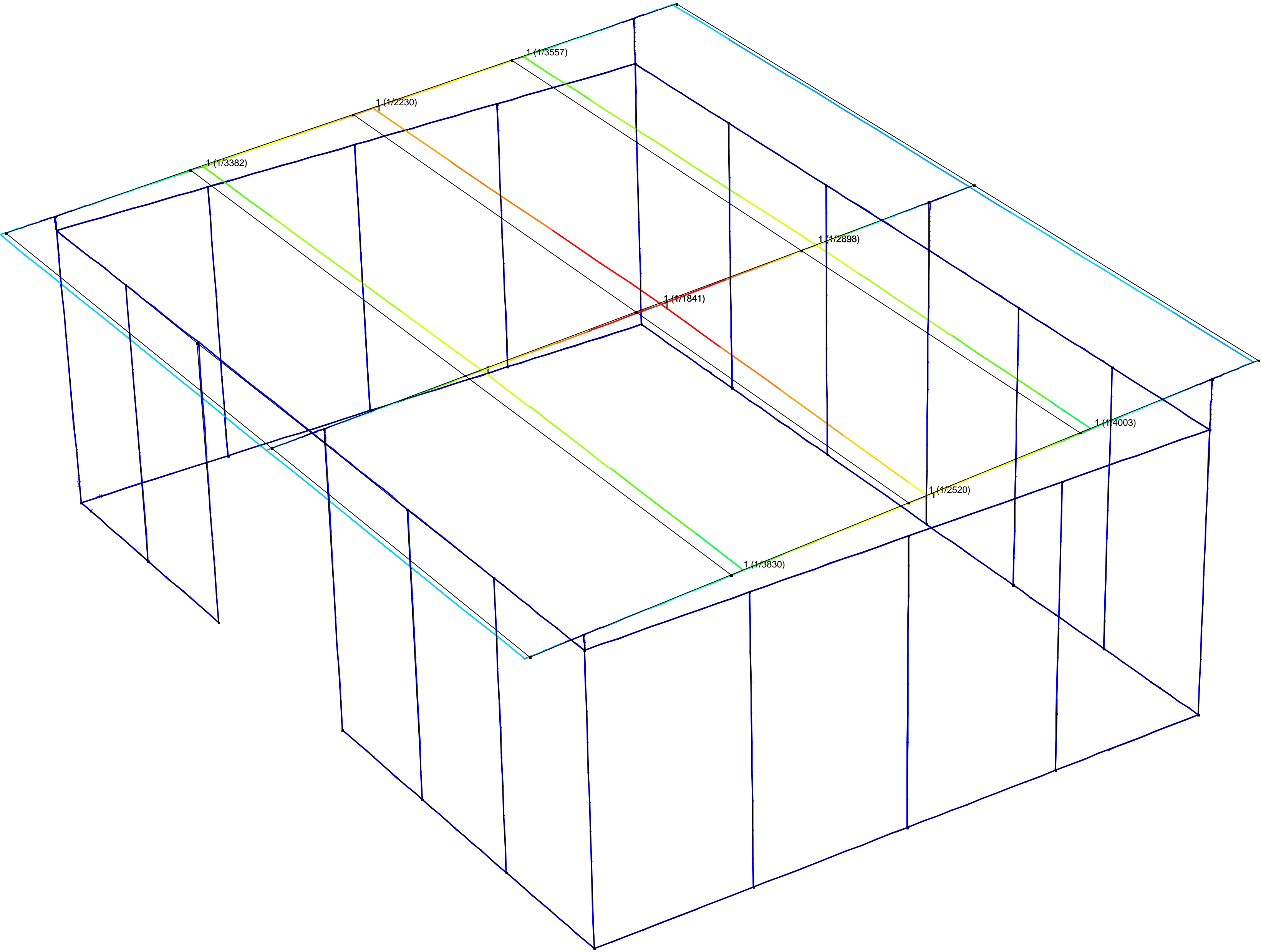
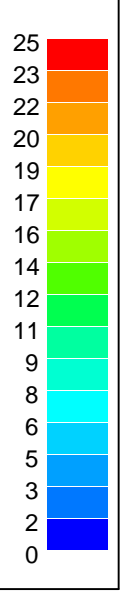
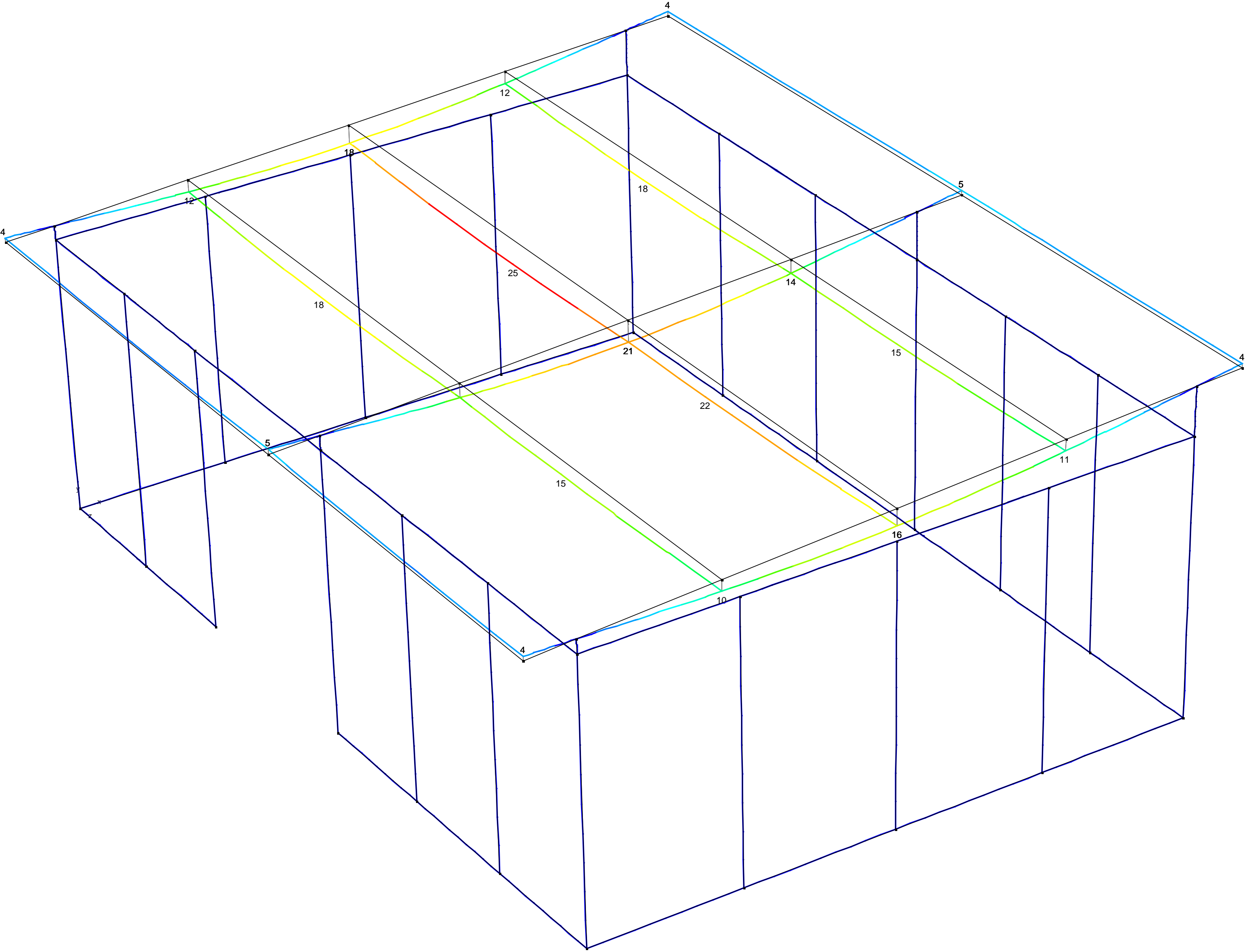


Lasten - Wind -z onderdruk (kN, kNm, kN/m)

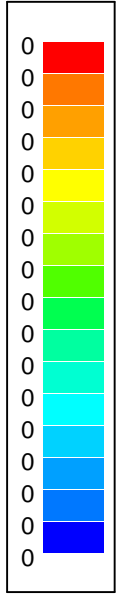
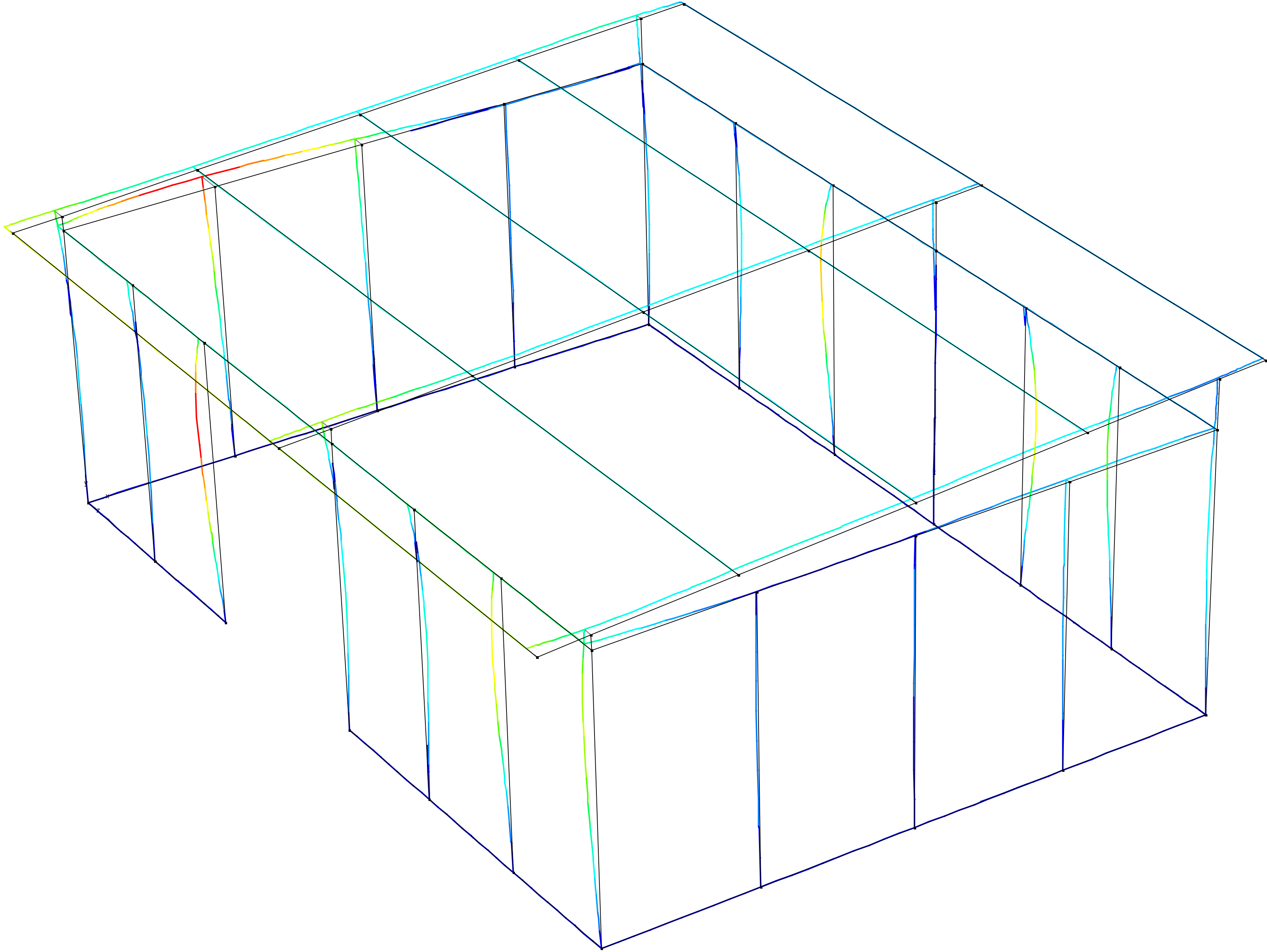


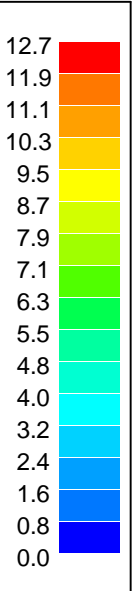


y
x
z

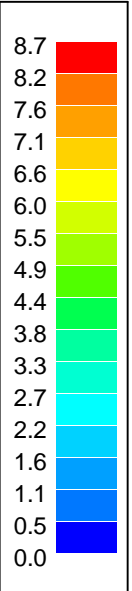
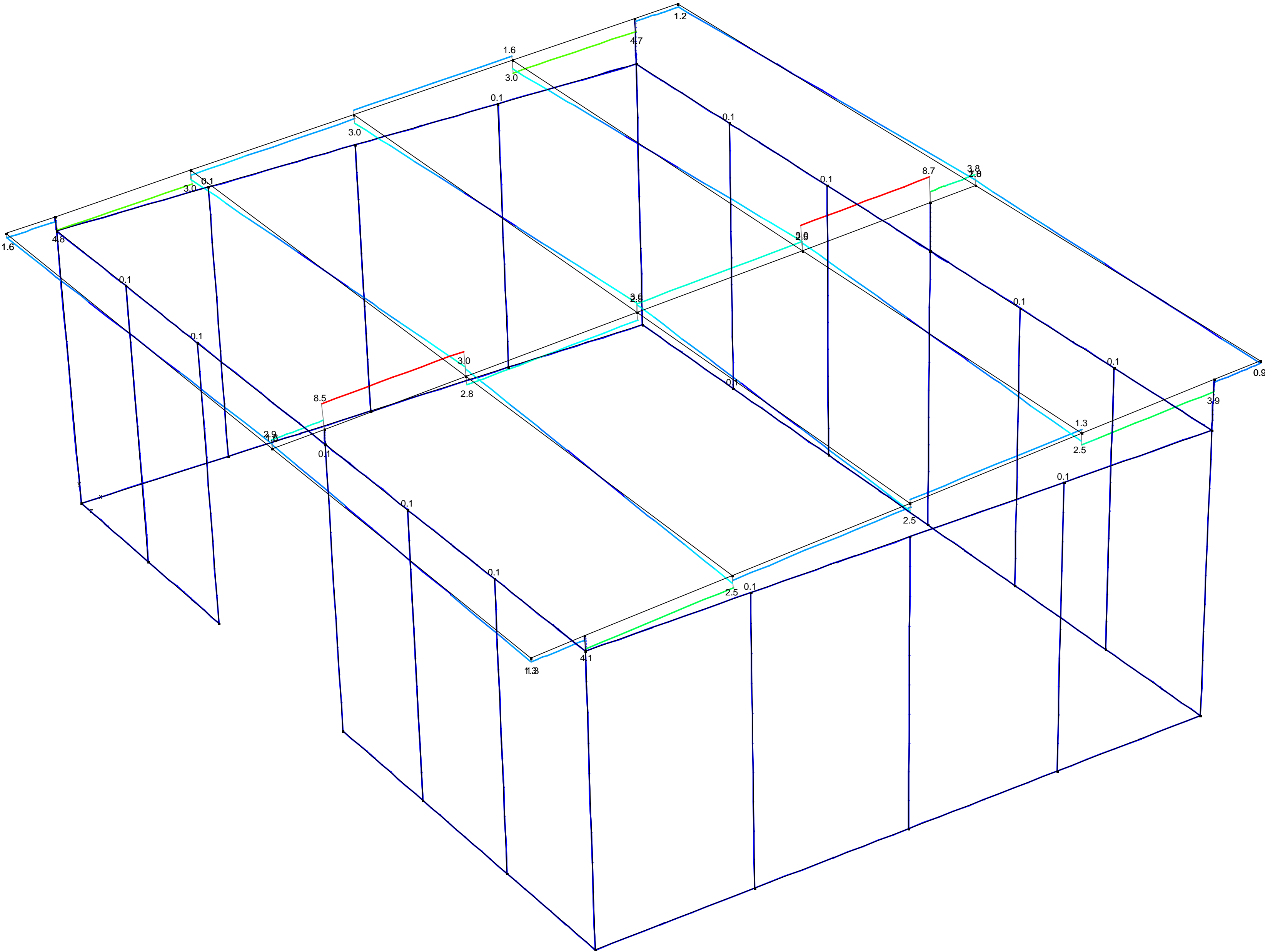


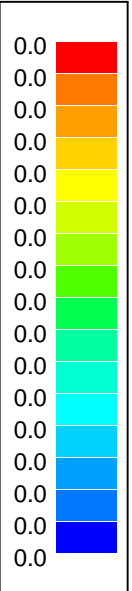
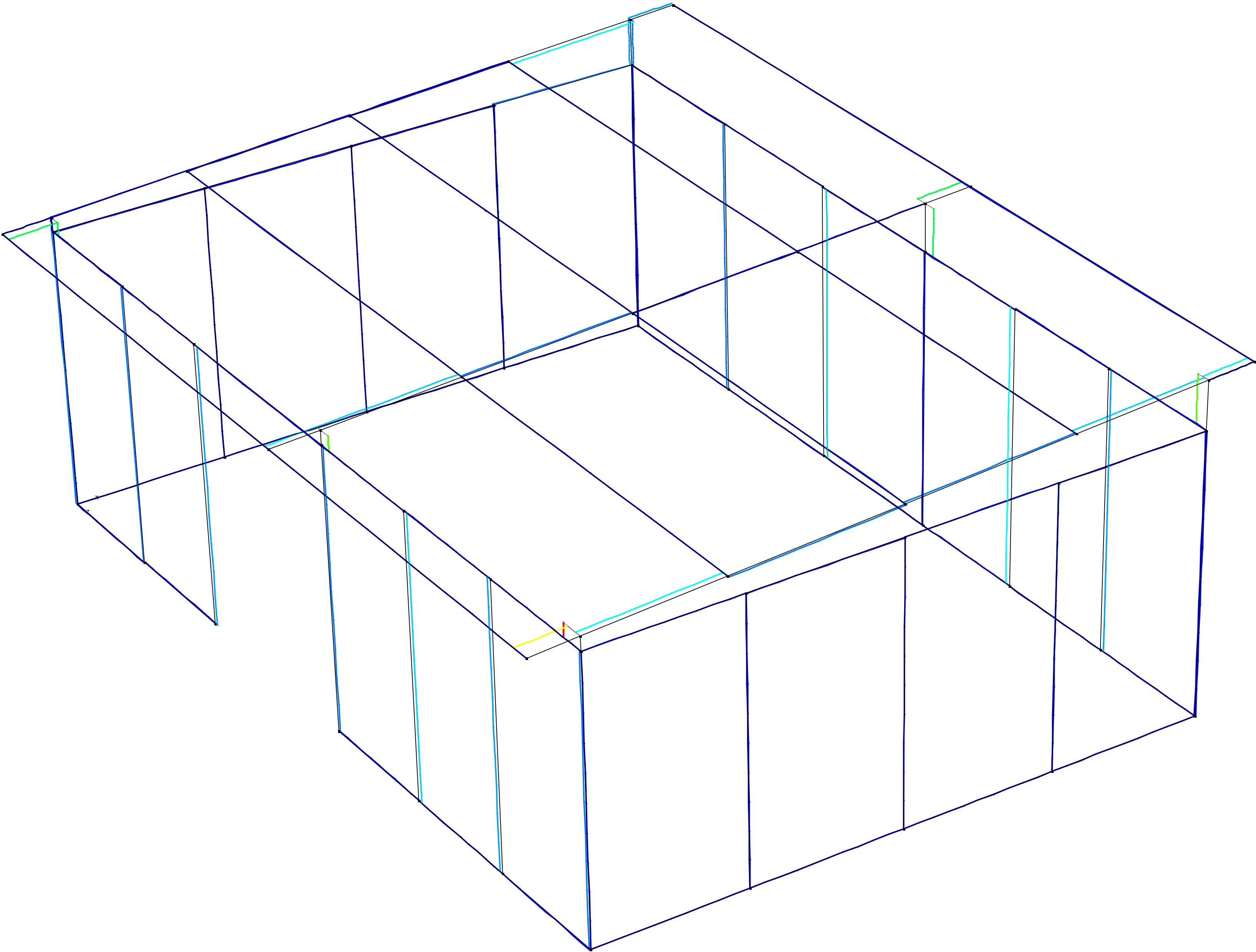
Plot - Vervorming dZ (mm) - GGT ZC

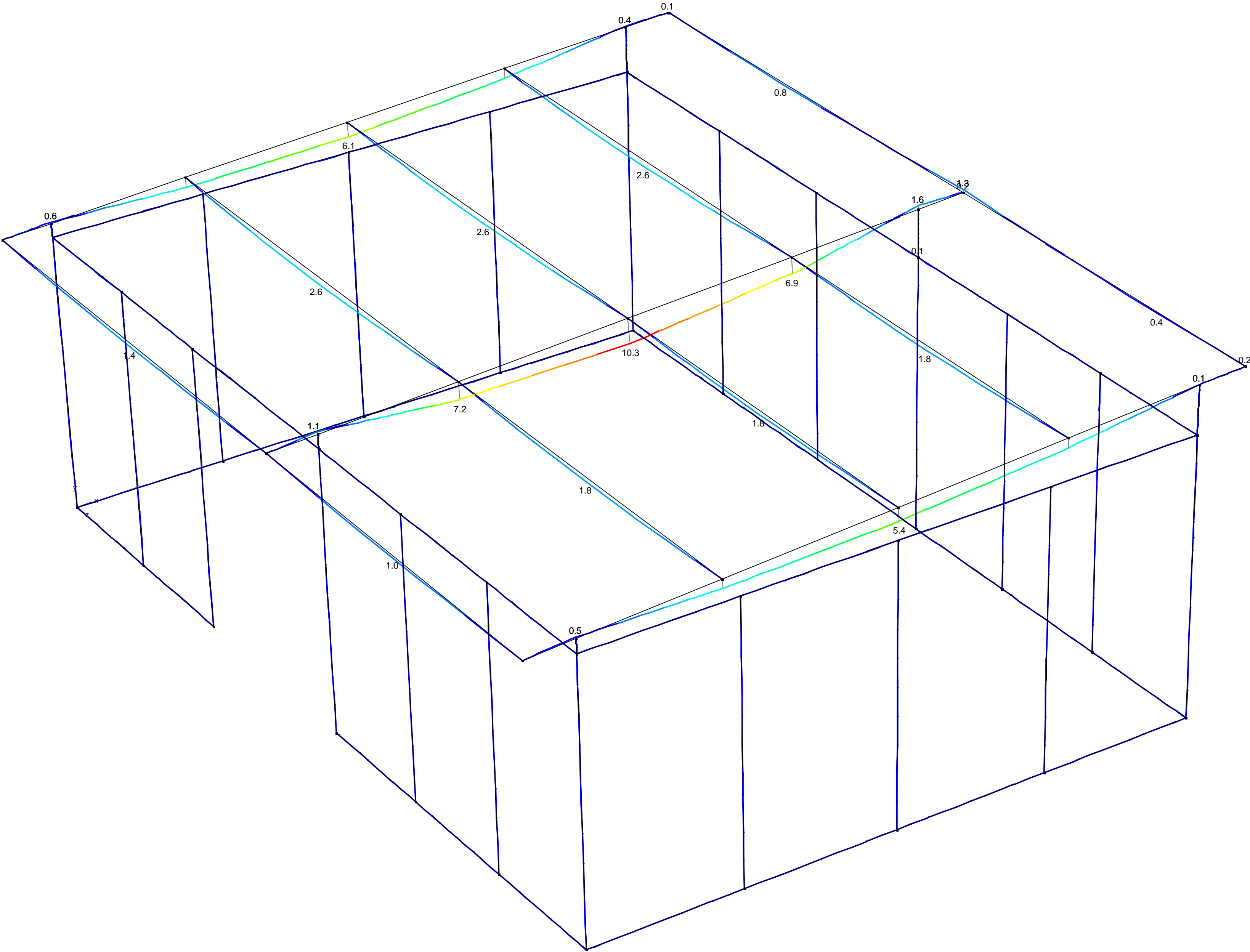




Plot - Dwarskrachten Vz' (kN) - UGT FC

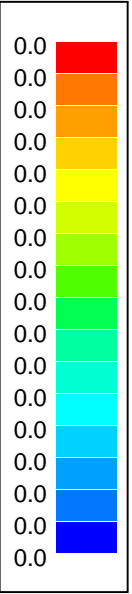
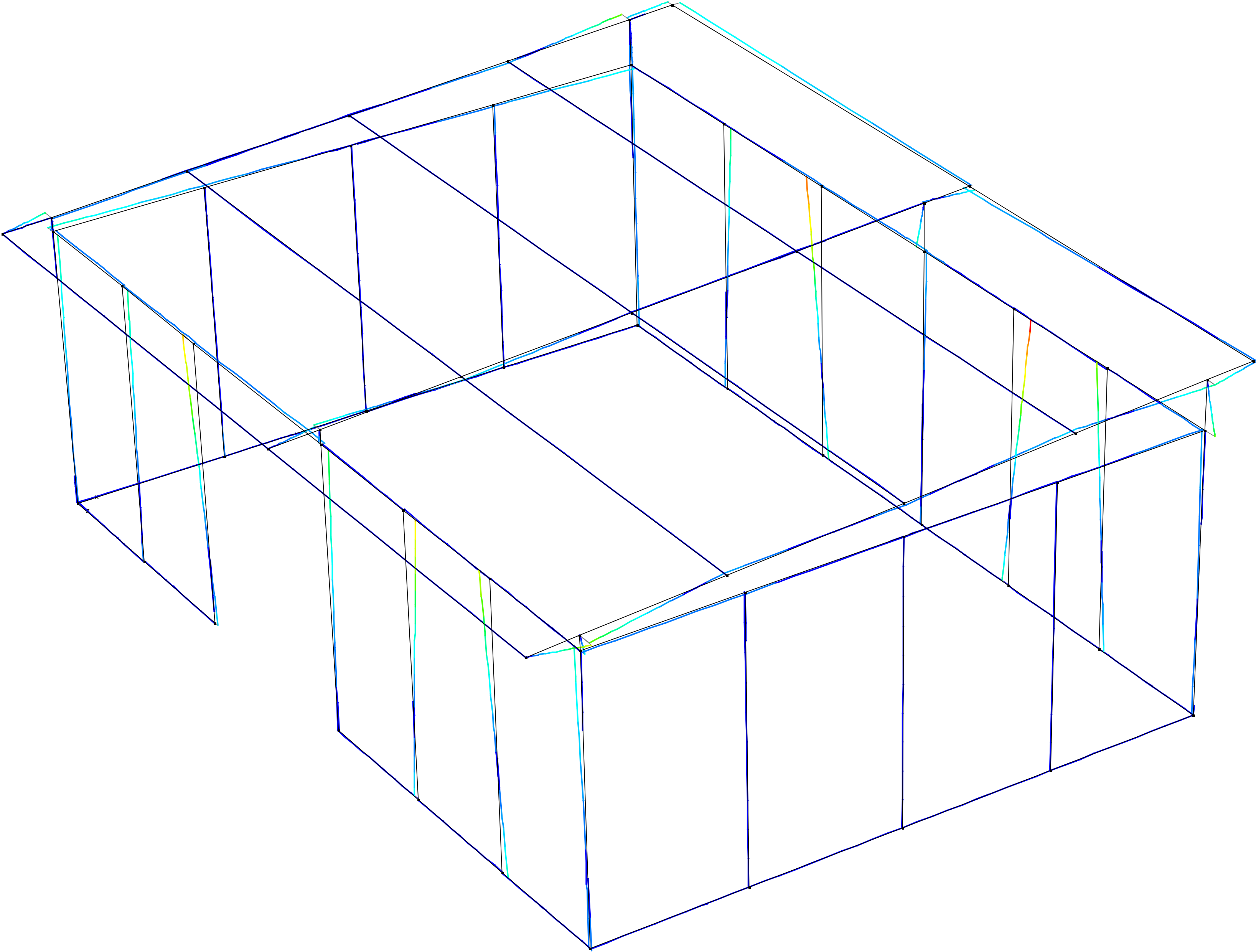


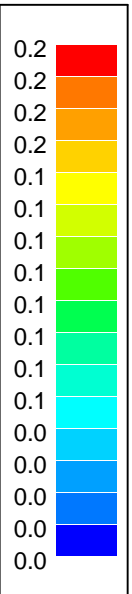




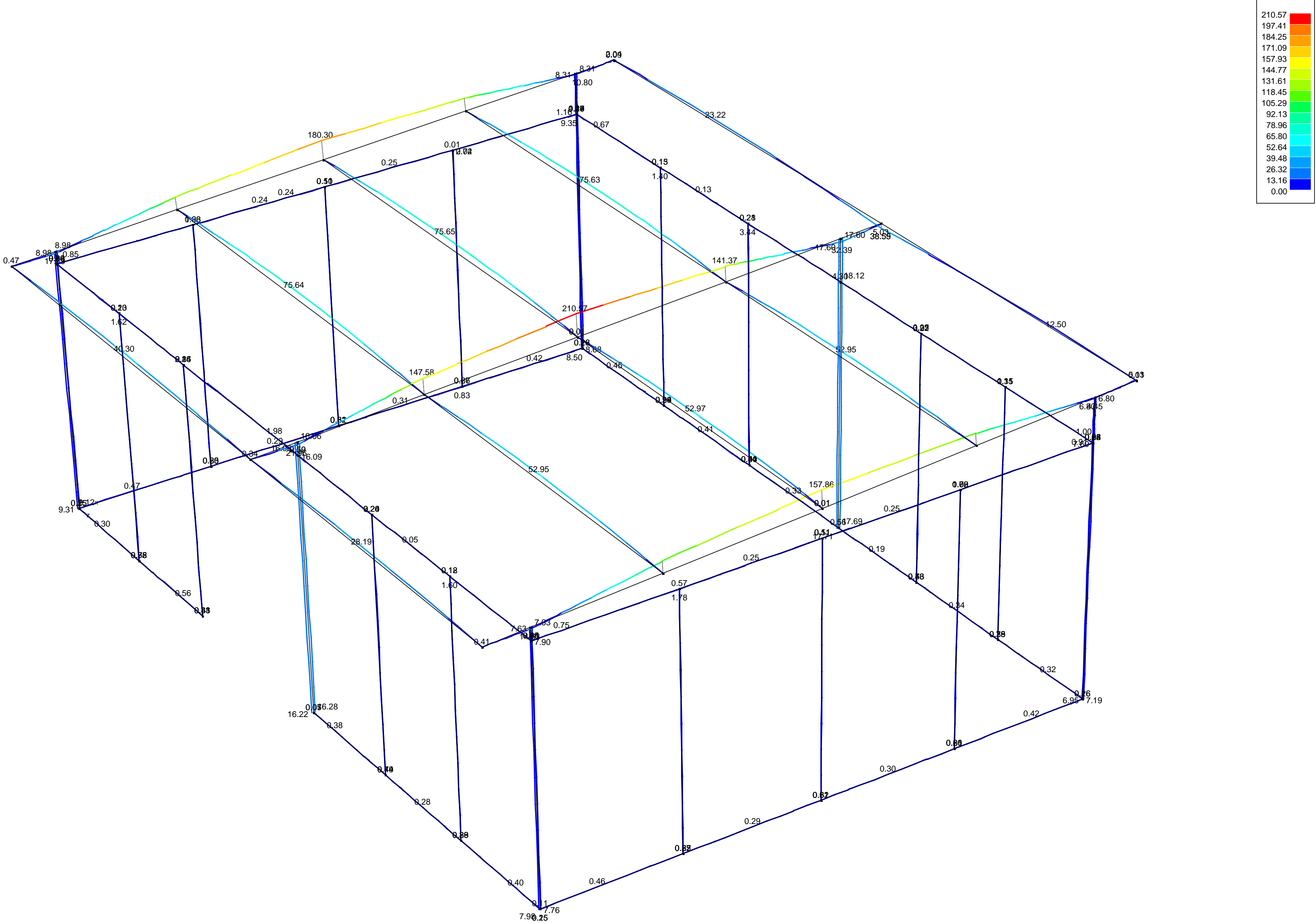
y
x
z

Plot - Buigende momenten Mz' (kNm) - UGT FC

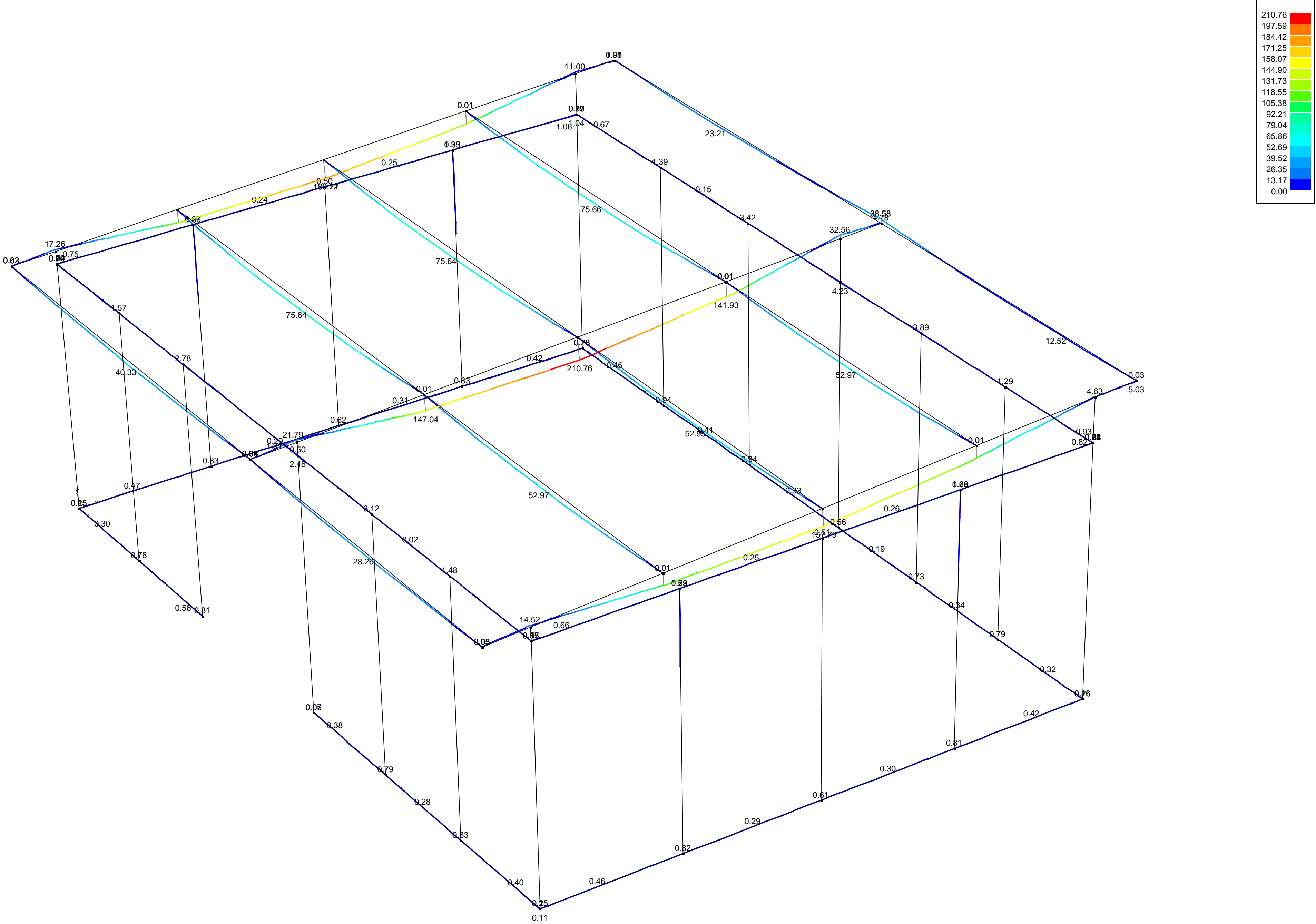


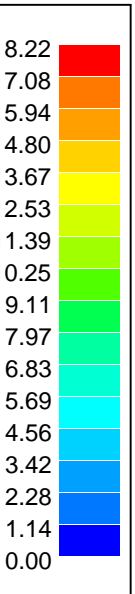


Plot - Drukspanning Sy' (N/mm²) - UGT FC

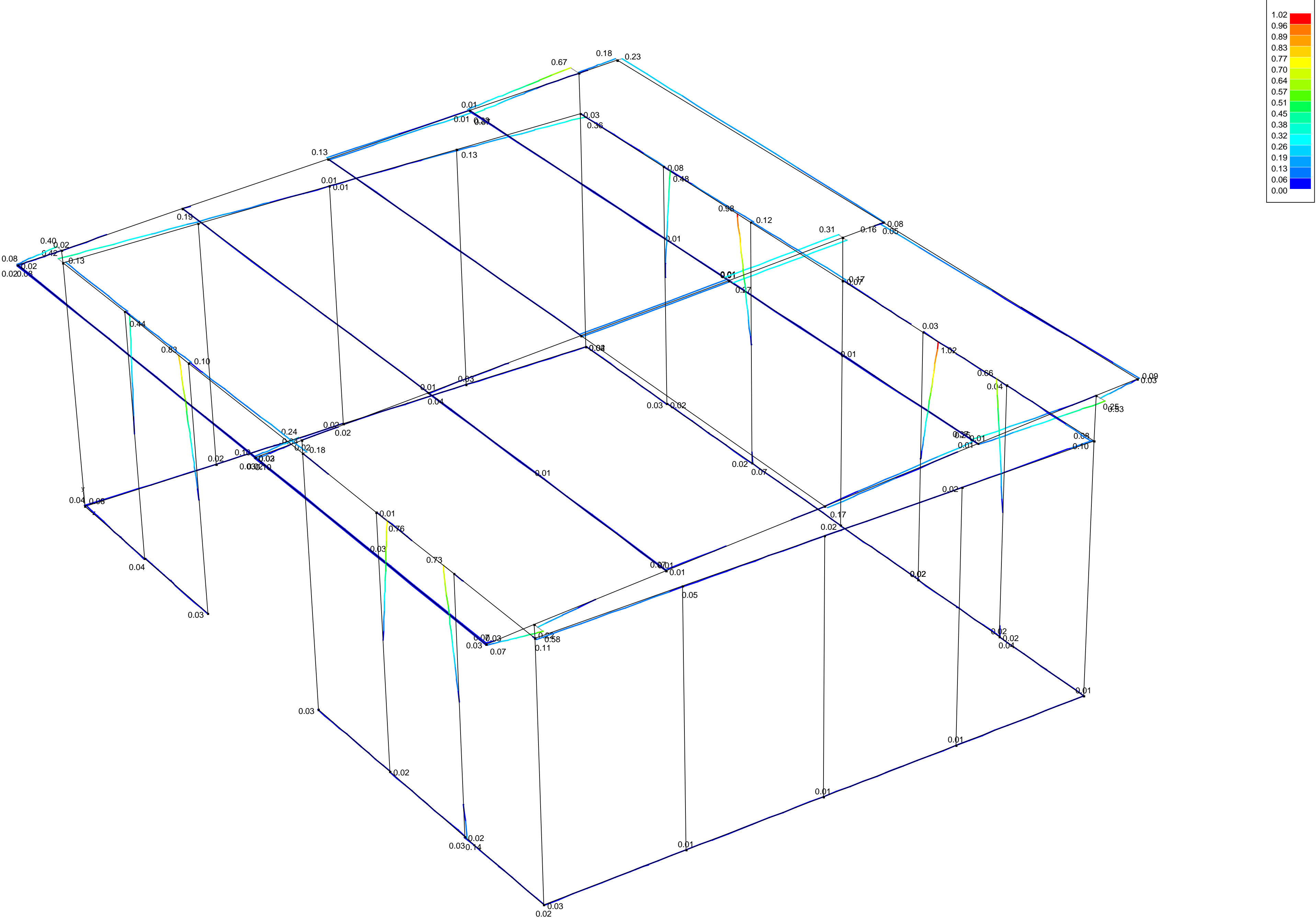


Plot - Trekspanning Sy' (N/mm²) - UGT FC

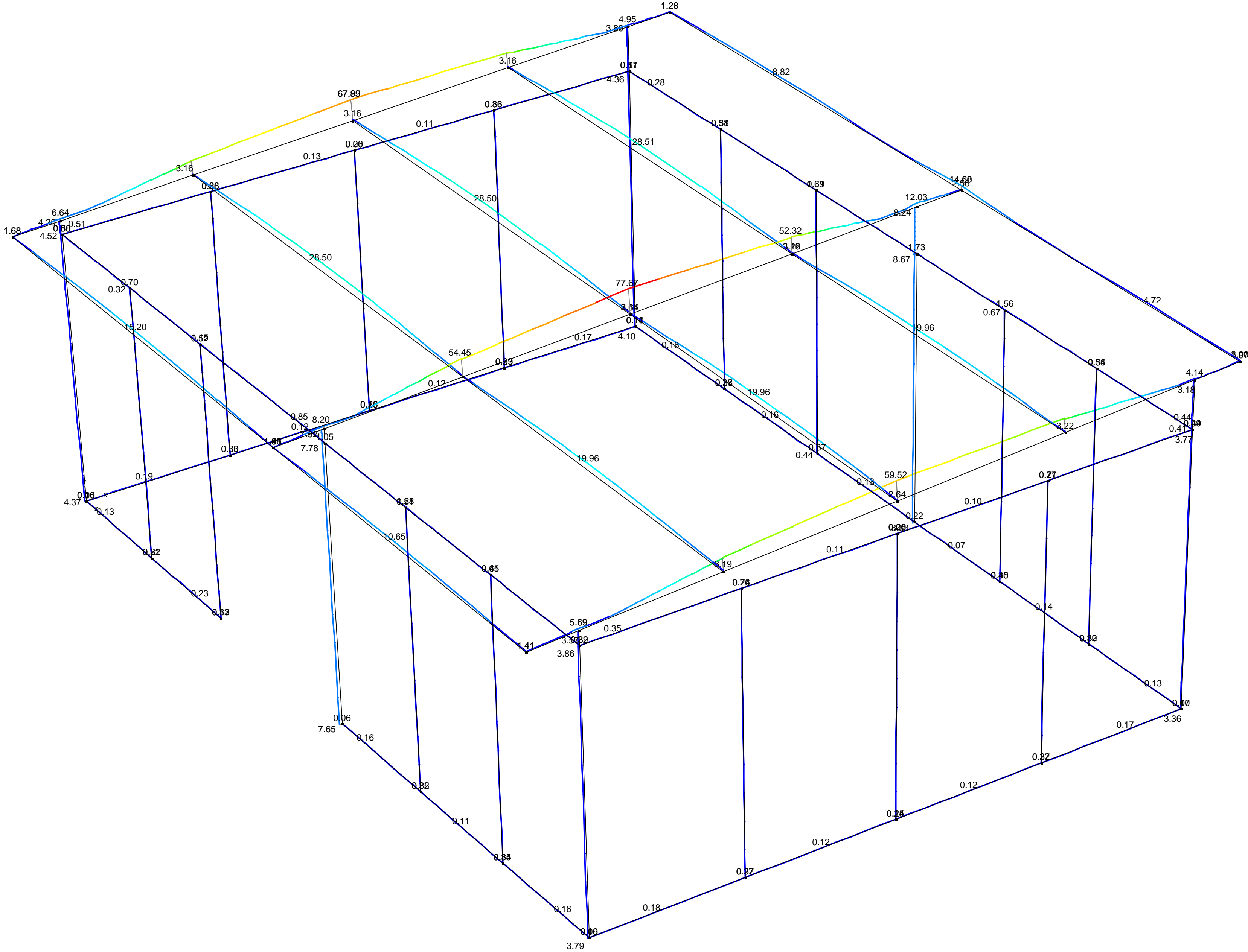


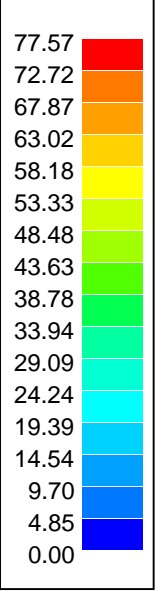
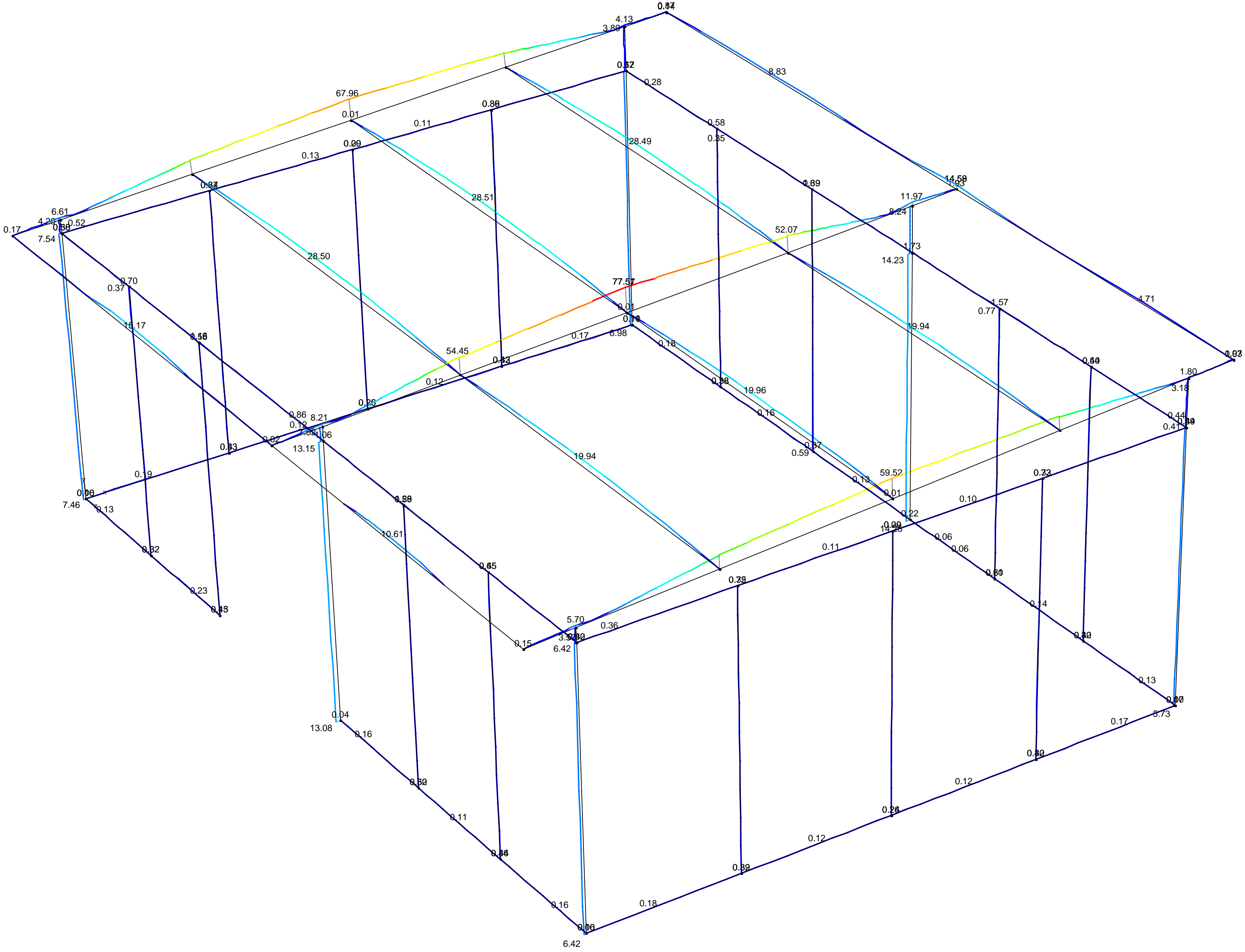


Plot - Trekspanning Sz' (N/mm²) - UGT FC



















Plot - Weerstand van de profielen (%) - ENV 1993-1-1 - EC5





Data - Lastengroepen

lastengroepen	γ_w	γ_{w+}	γ_g	γ_{g+}	$\psi/0$	$\psi/1$	$\psi/2$	
eigengewicht	1,35	1,35	1	1	1	1	1	
permanent	1,35	1,35	1	1	1	1	1	
Sneeuw	1,5	0	1	0	0,5	0	0	
Wind +x druk	1,5	0	1	0	0,6	0,2	0	
Wind -x druk	1,5	0	1	0	0,6	0,2	0	
Wind + z druk	1,5	0	1	0	0,6	0,2	0	
Wind - z druk	1,5	0	1	0	0,6	0,2	0	
Wind + x onderdruk	1,5	0	1	0	0,6	0,2	0	
Wind - x onderdruk	1,5	0	1	0	0,6	0,2	0	
Wind + z onderdruk	1,5	0	1	0	0,6	0,2	0	
Wind -z onderdruk	1,5	0	1	0	0,6	0,2	0	

-  = altijd samen
-  = alle combinaties
-  = alle combinaties, maar één last tegelijkertijd
-  = Seismisch event
-  = massa's voor trillingsanalyse