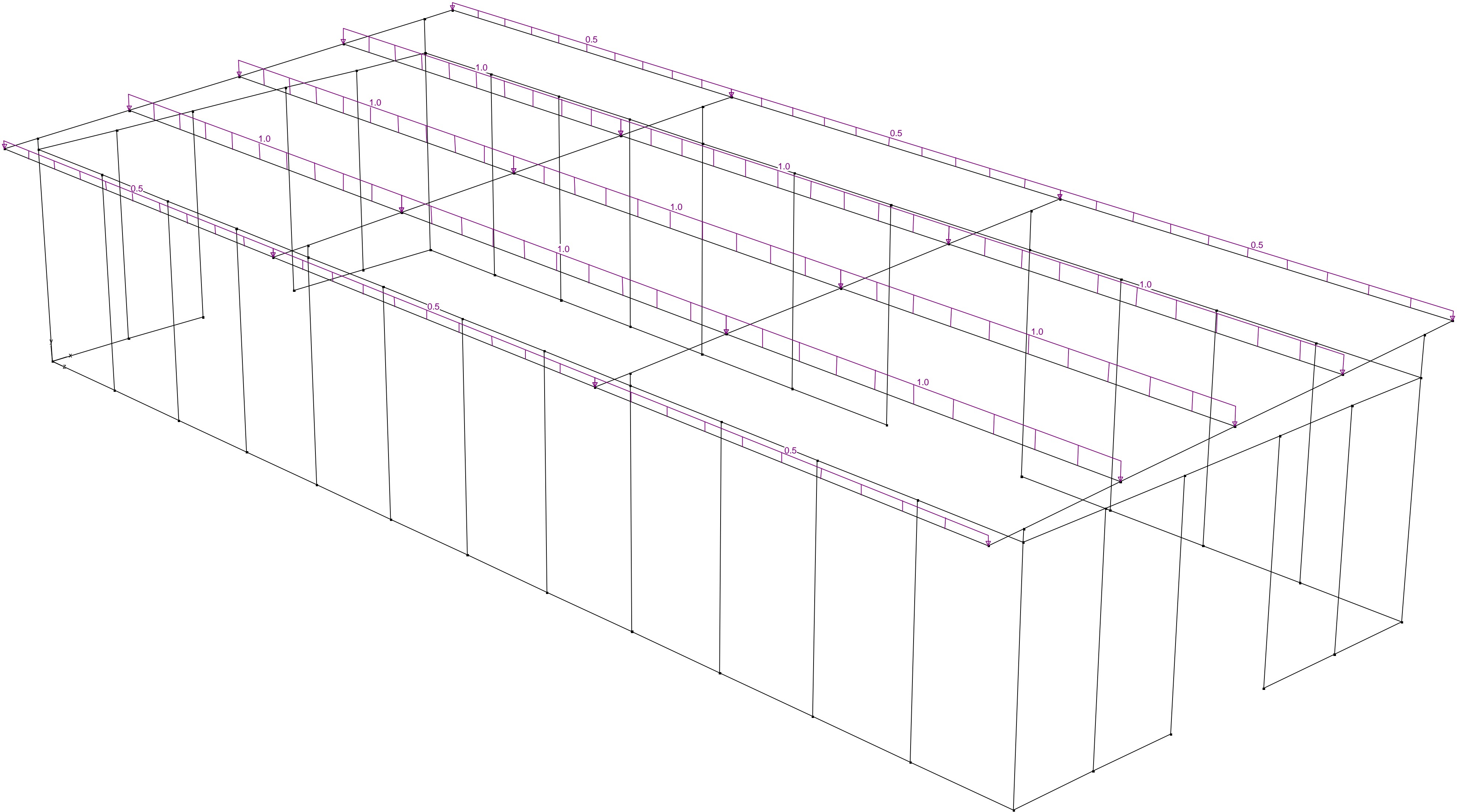
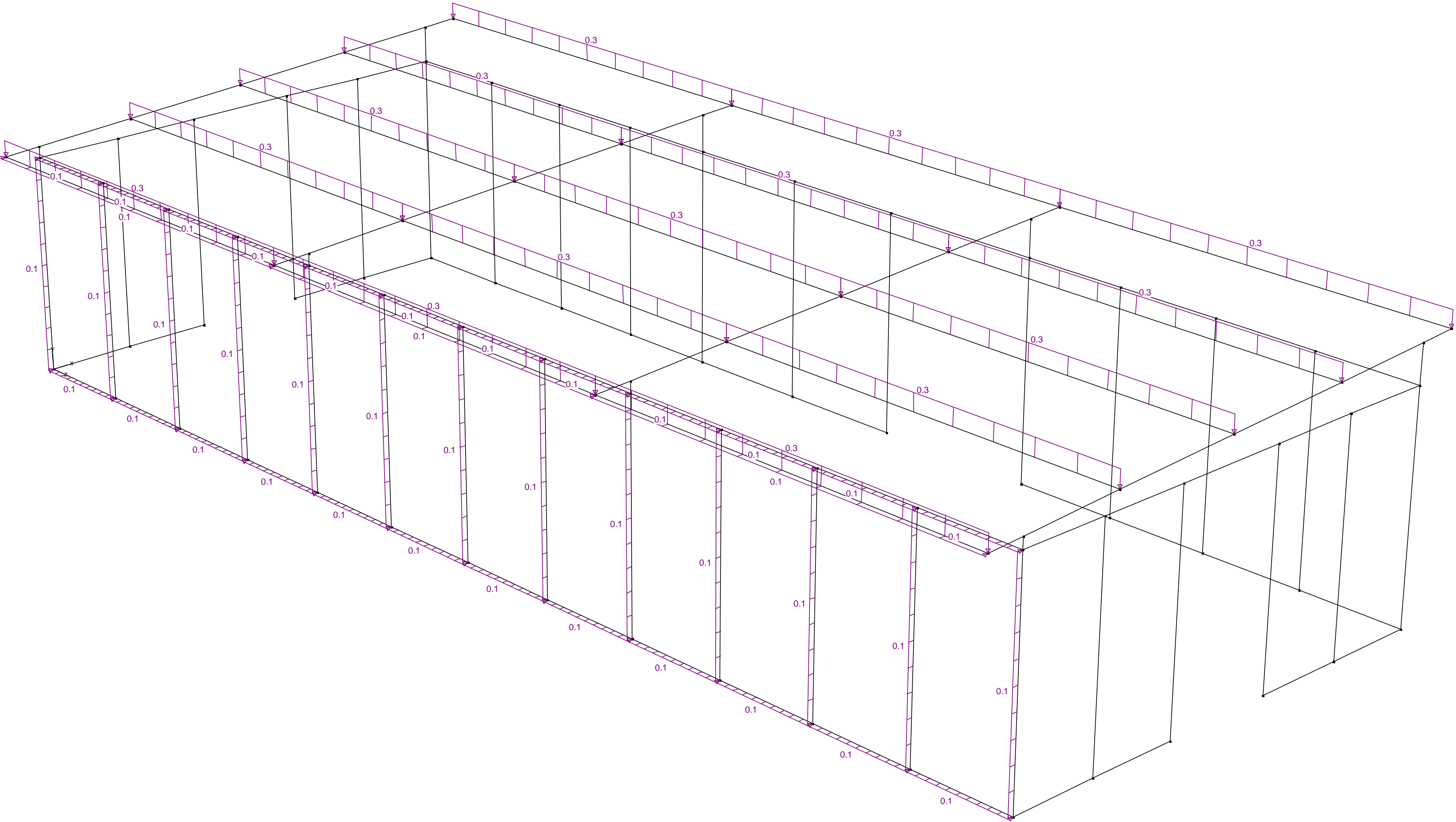
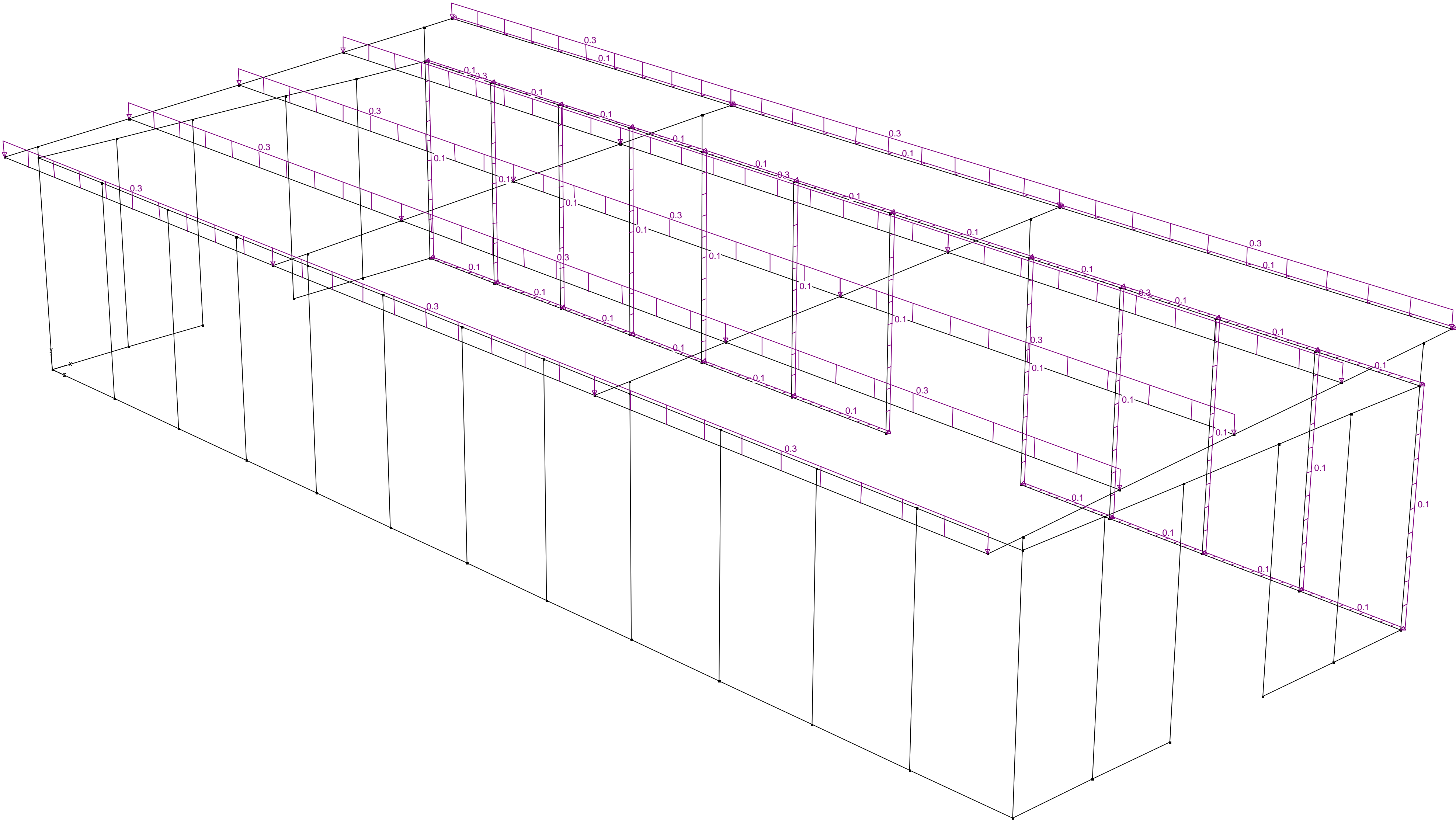
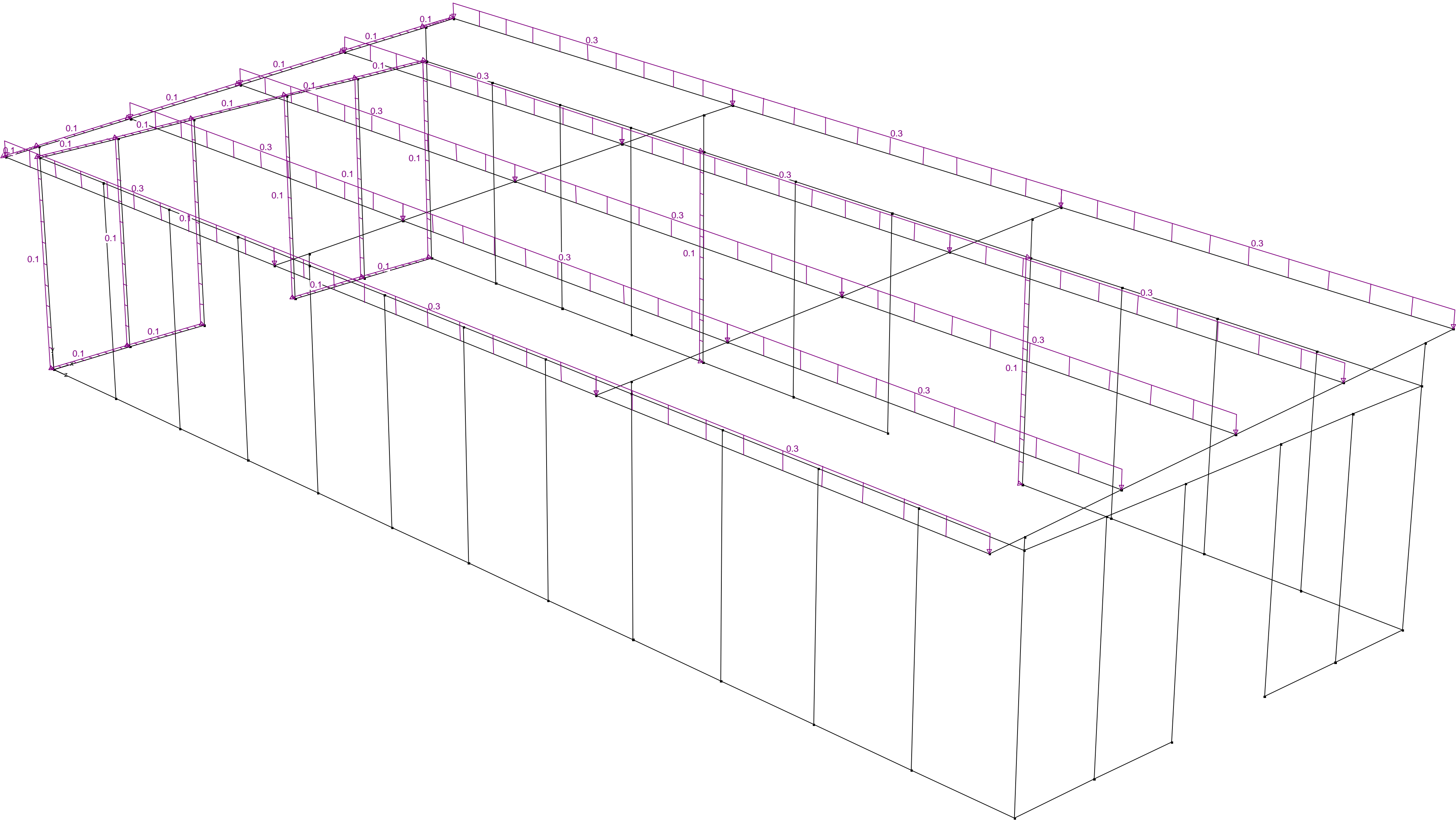


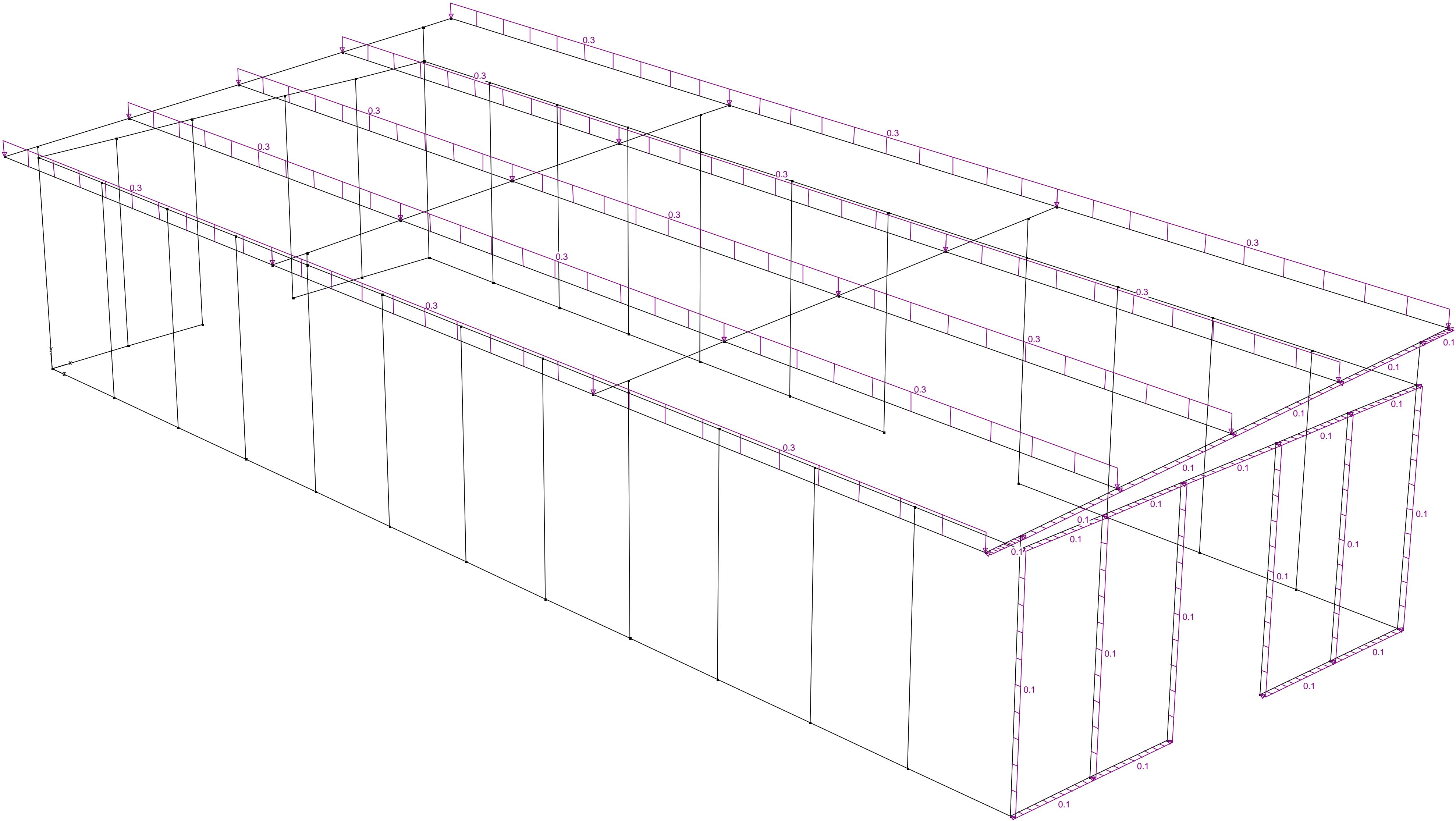
Lasten - Sneeuw (kN, kNm, kN/m)



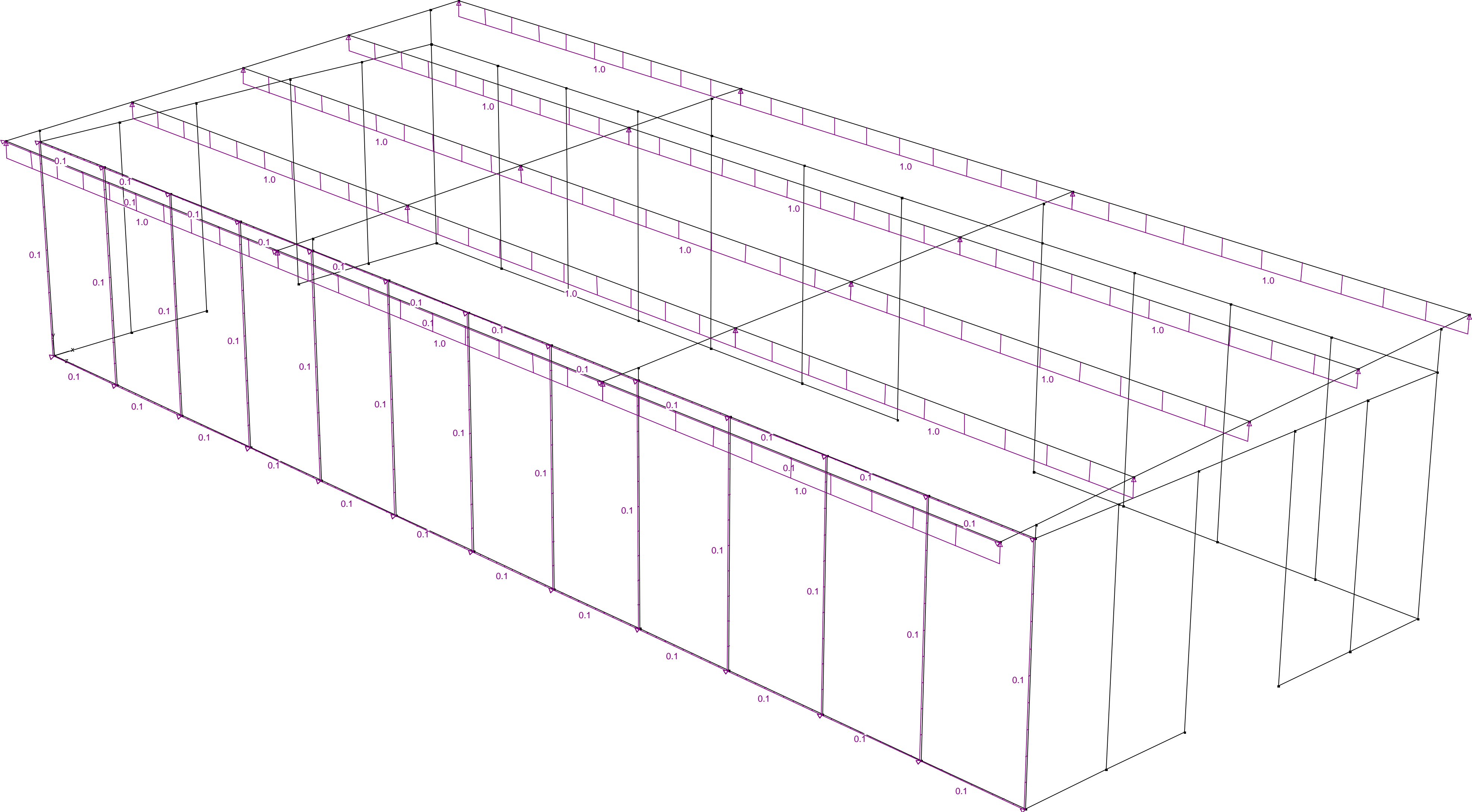




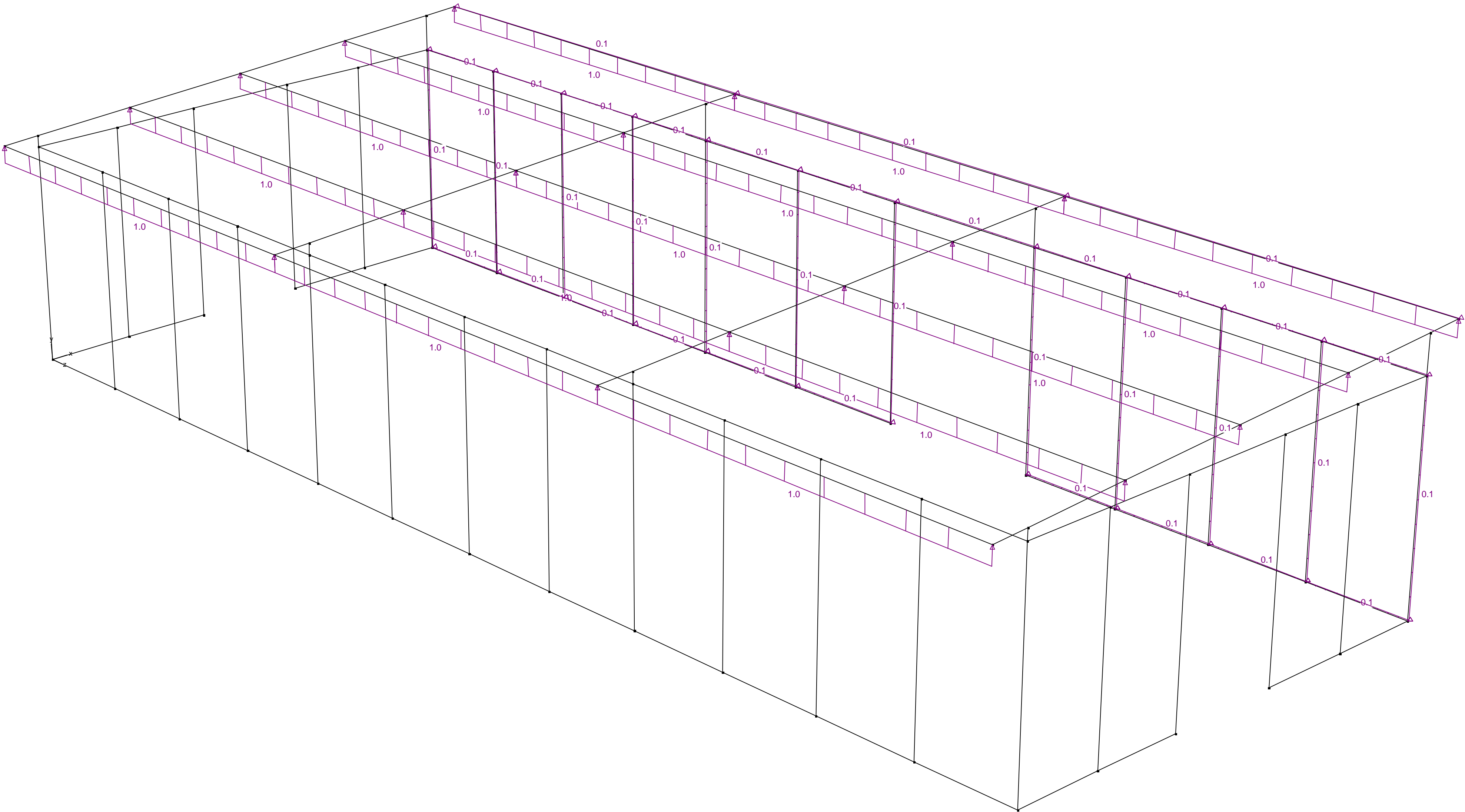




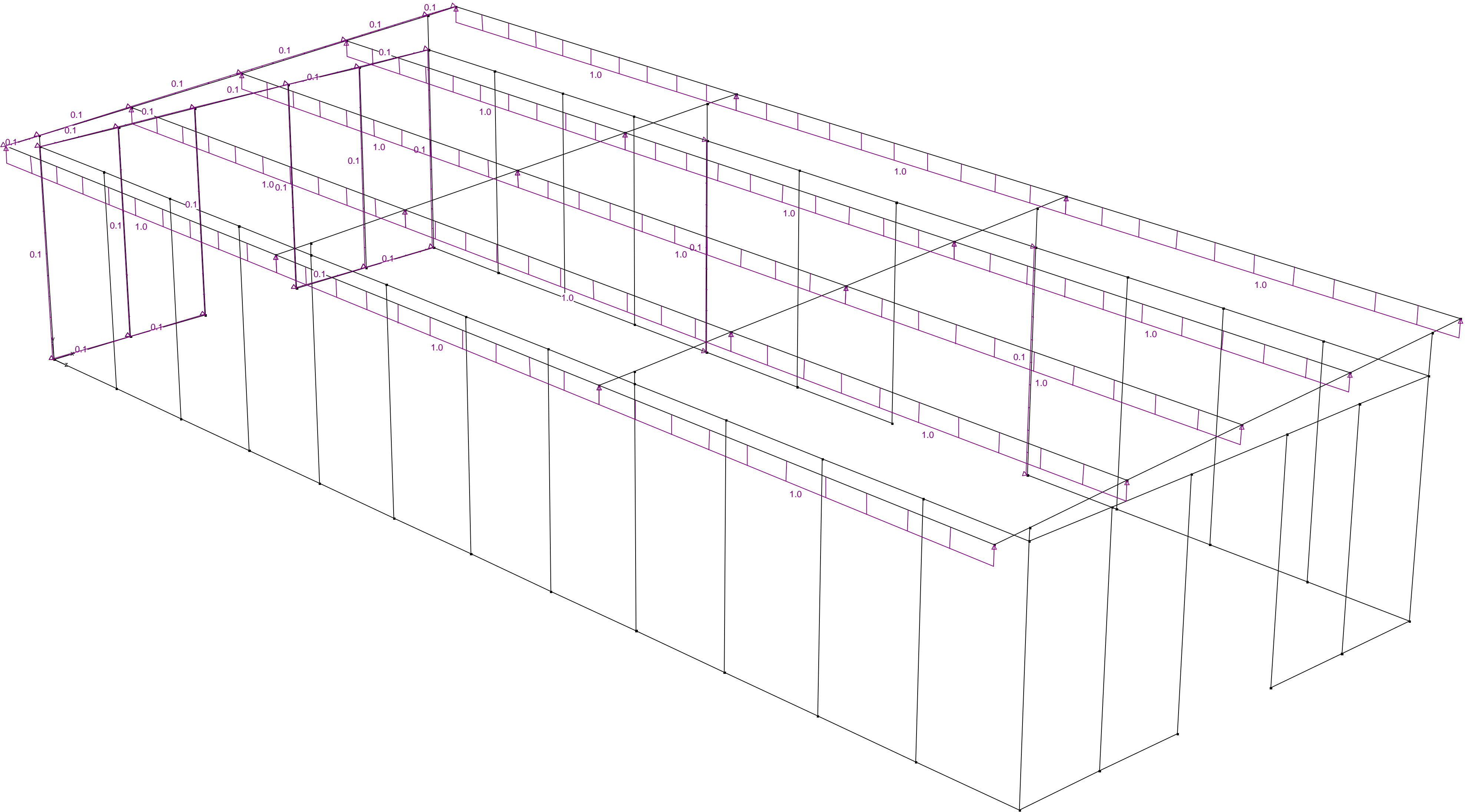
Lasten - Wind + x onderdruk (kN, kNm, kN/m)

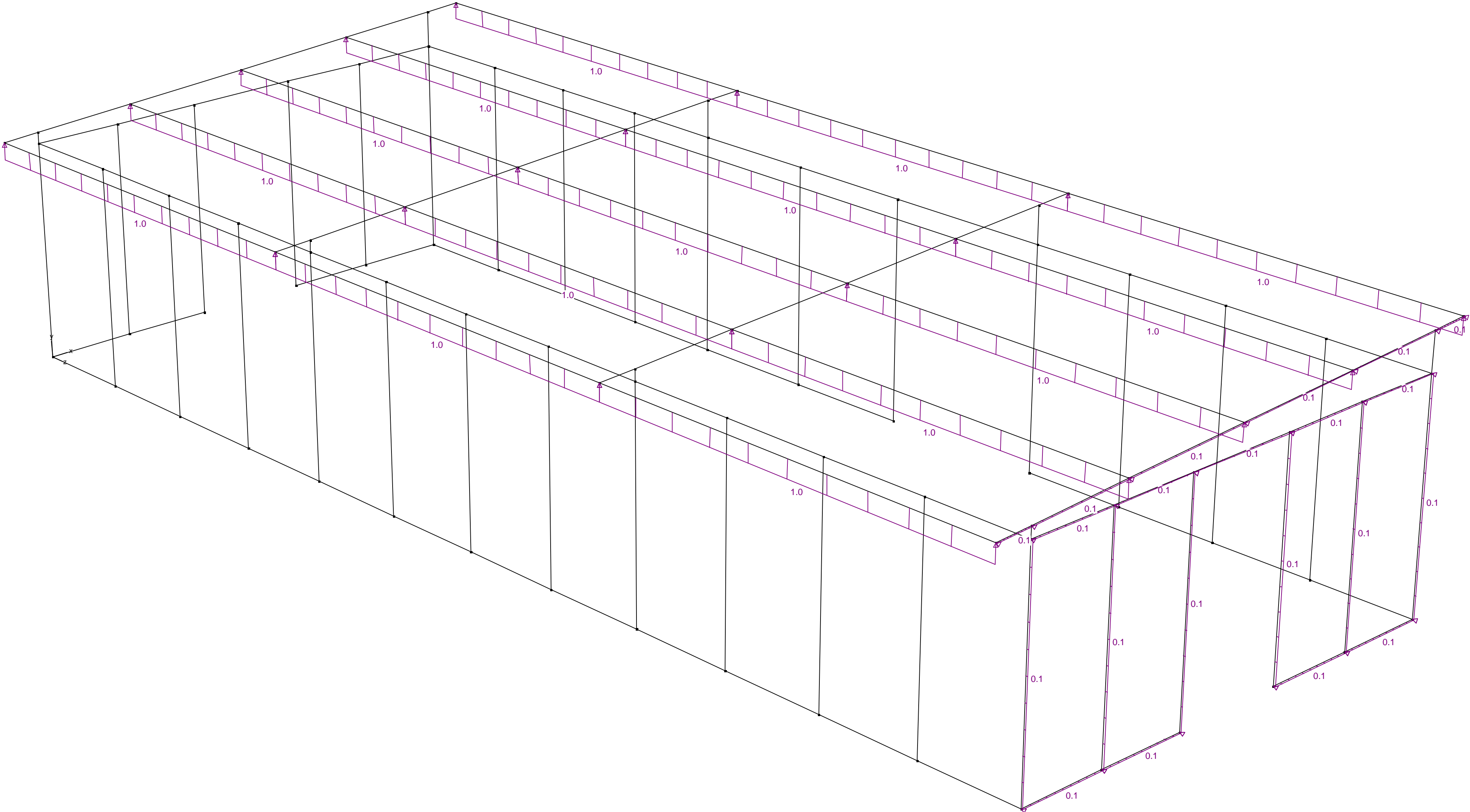


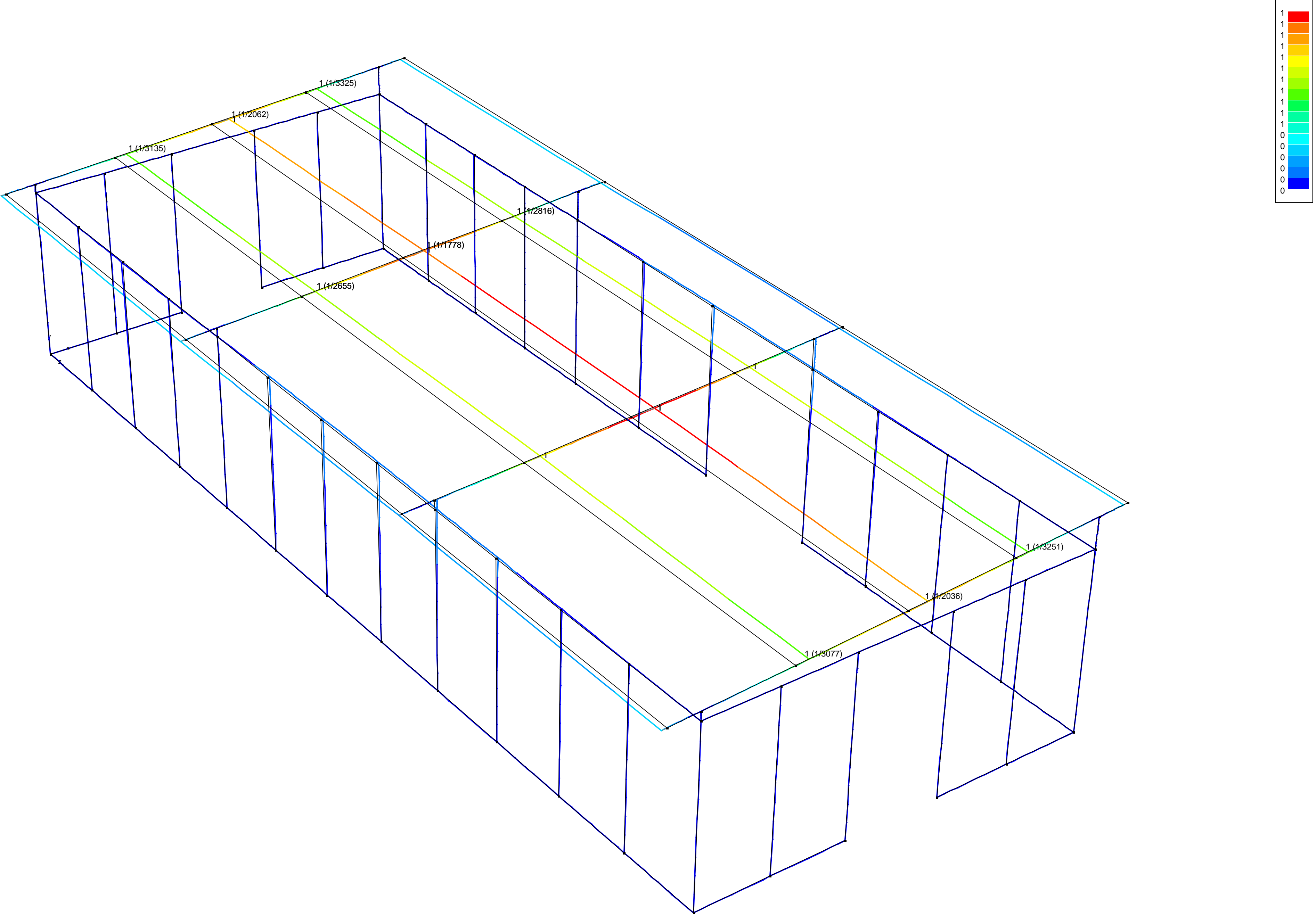
Lasten - Wind - x onderdruk (kN, kNm, kN/m)

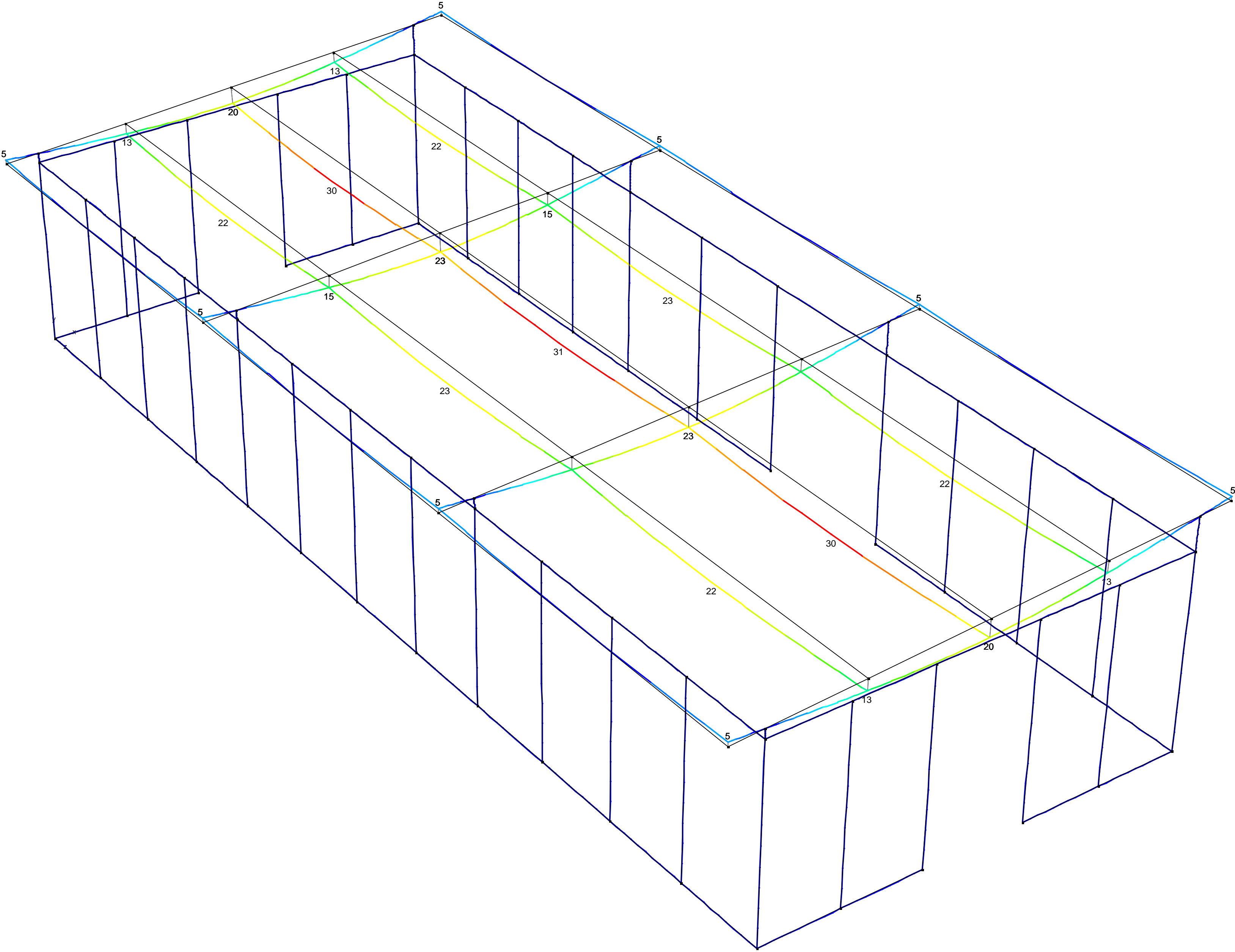


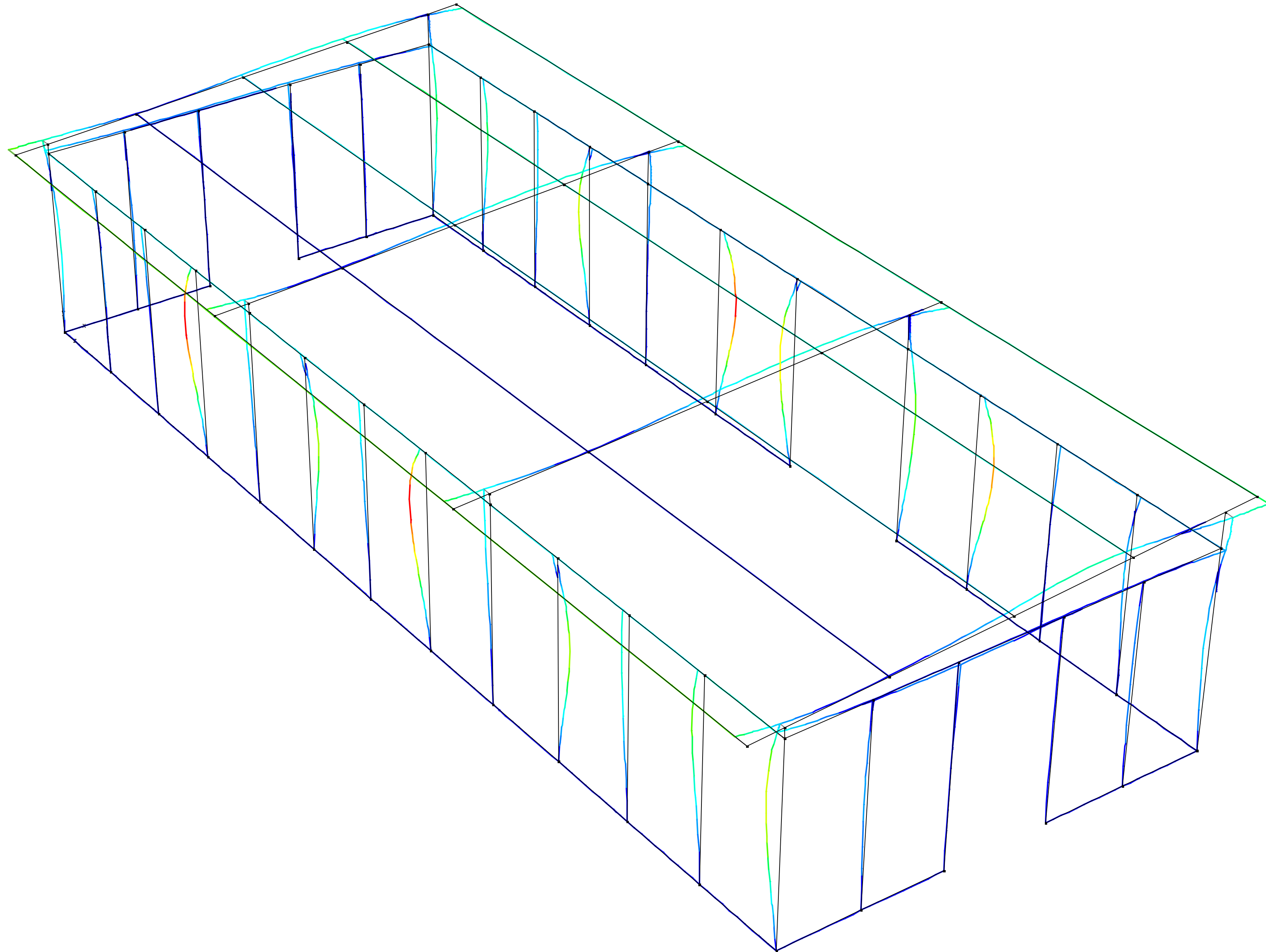
y
x
z

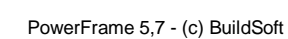
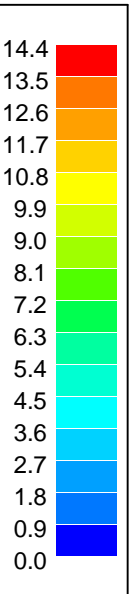


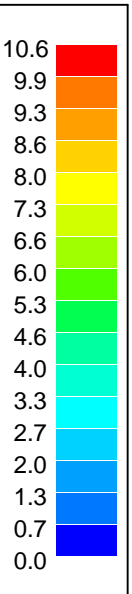


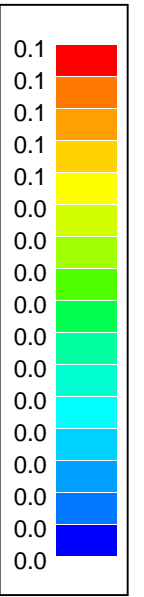




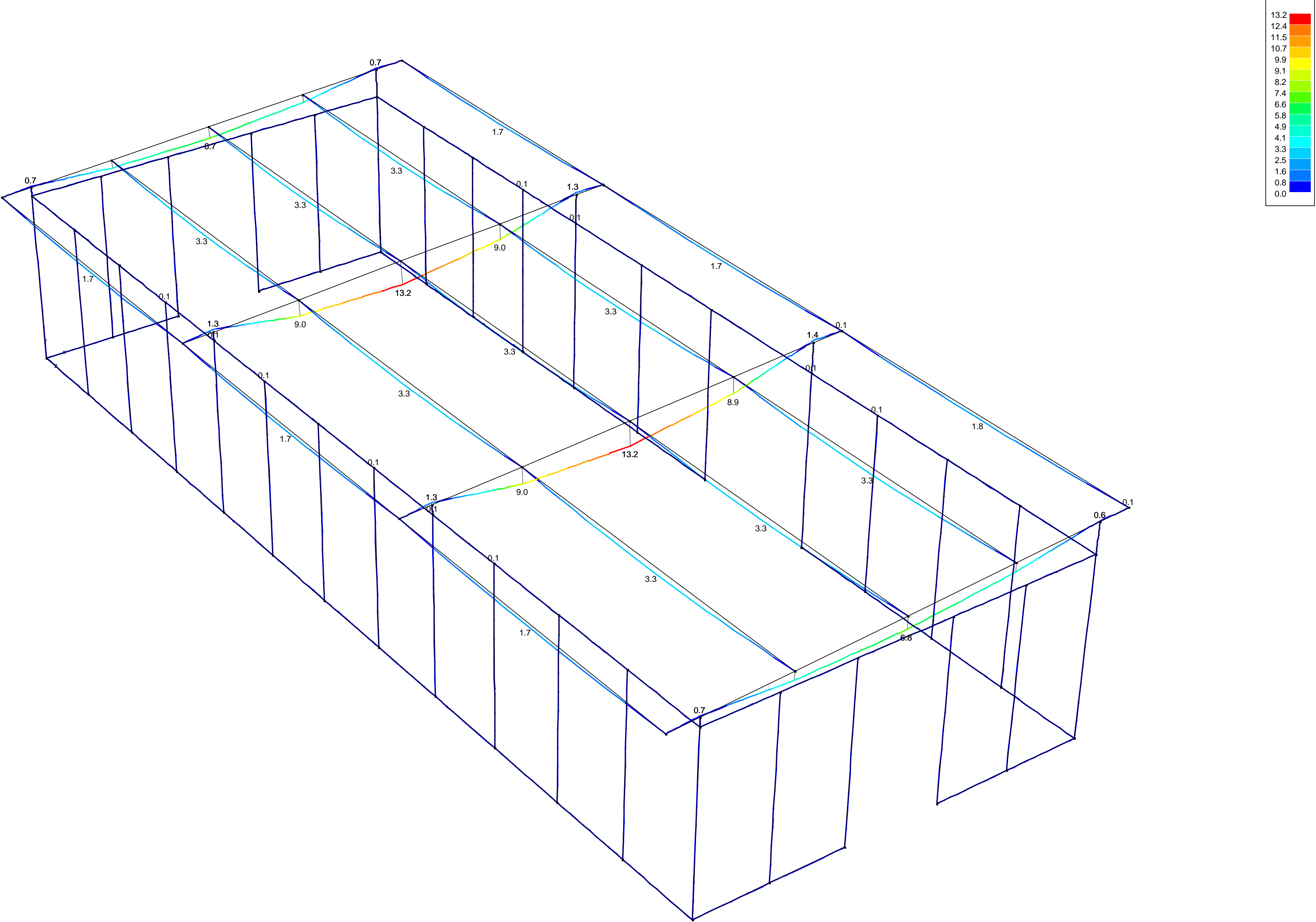


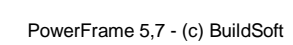
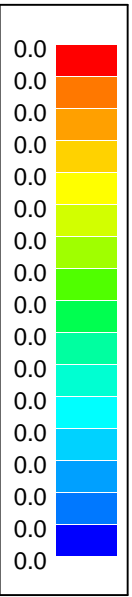




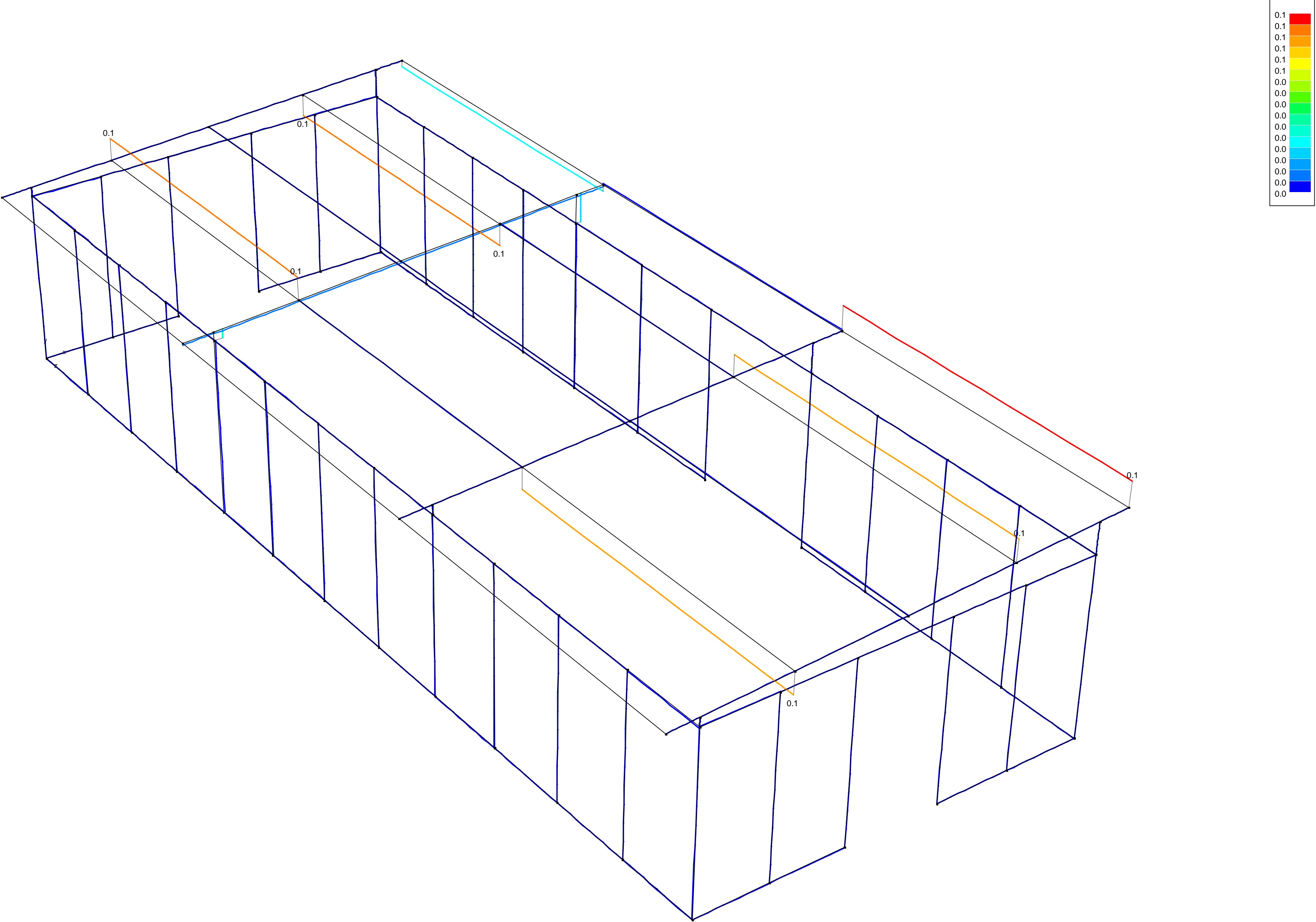


Plot - Biegende momenten My' (kNm) - UGT FC

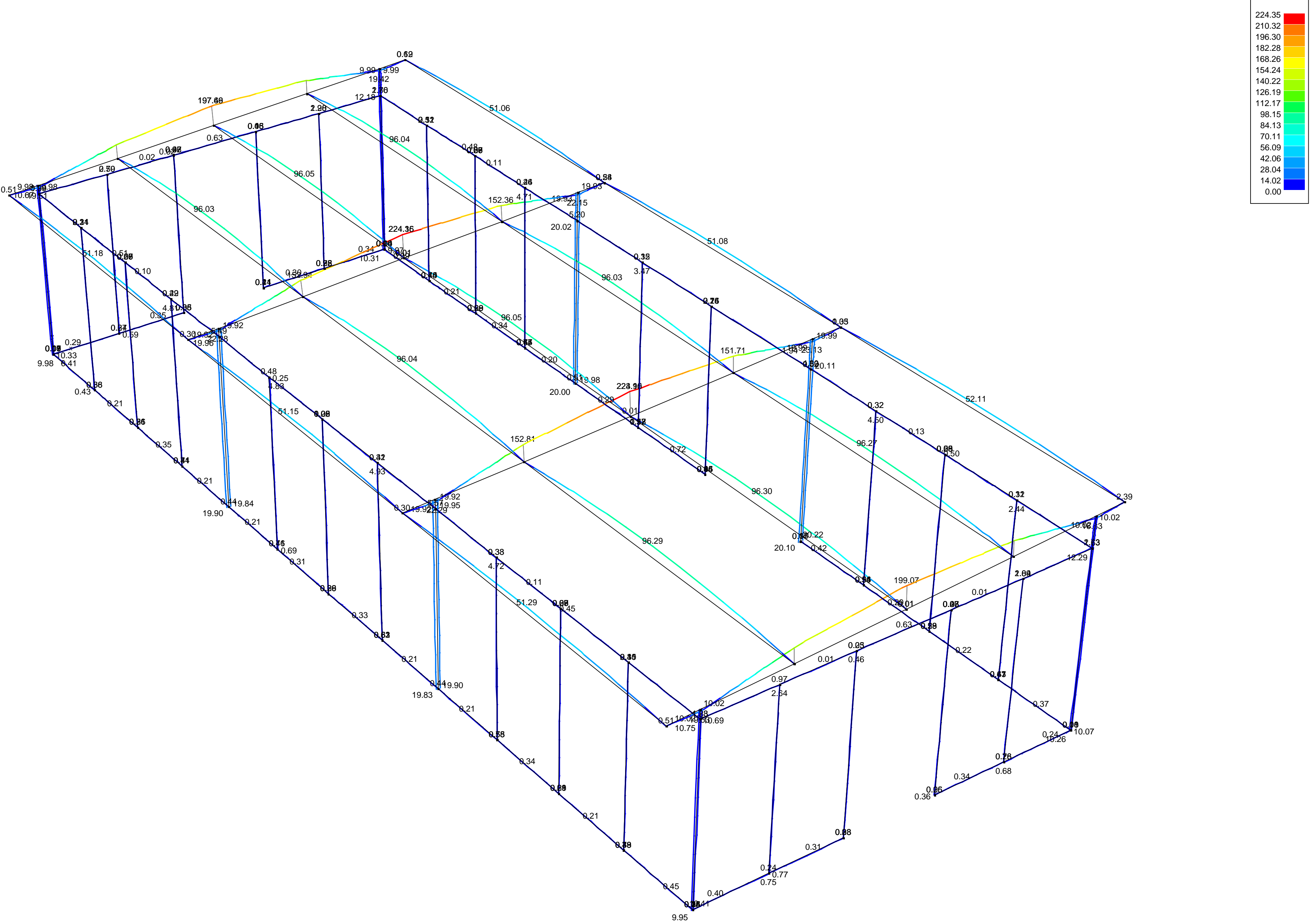


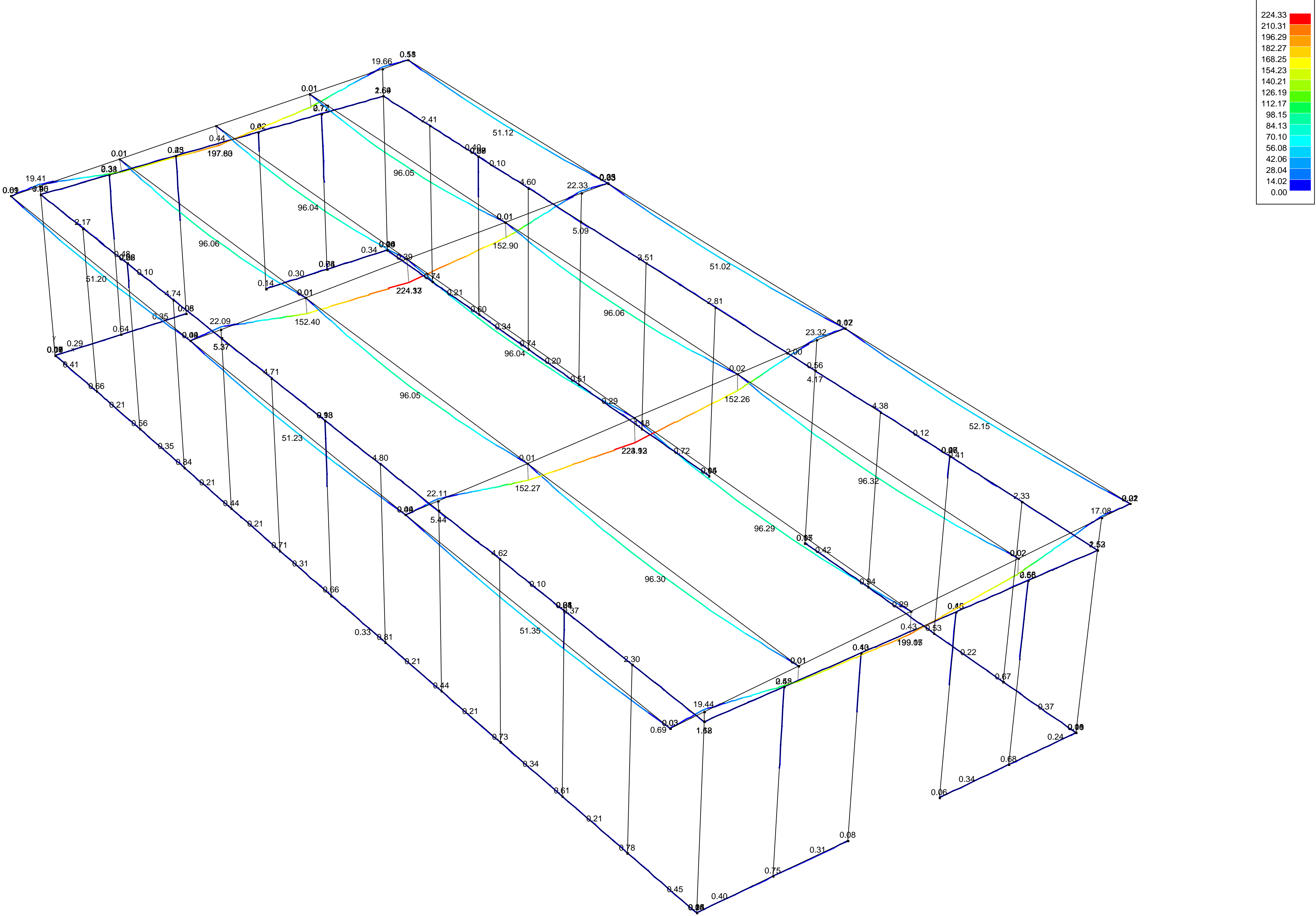


Plot - Torsie Tx' (kNm) - UGT FC

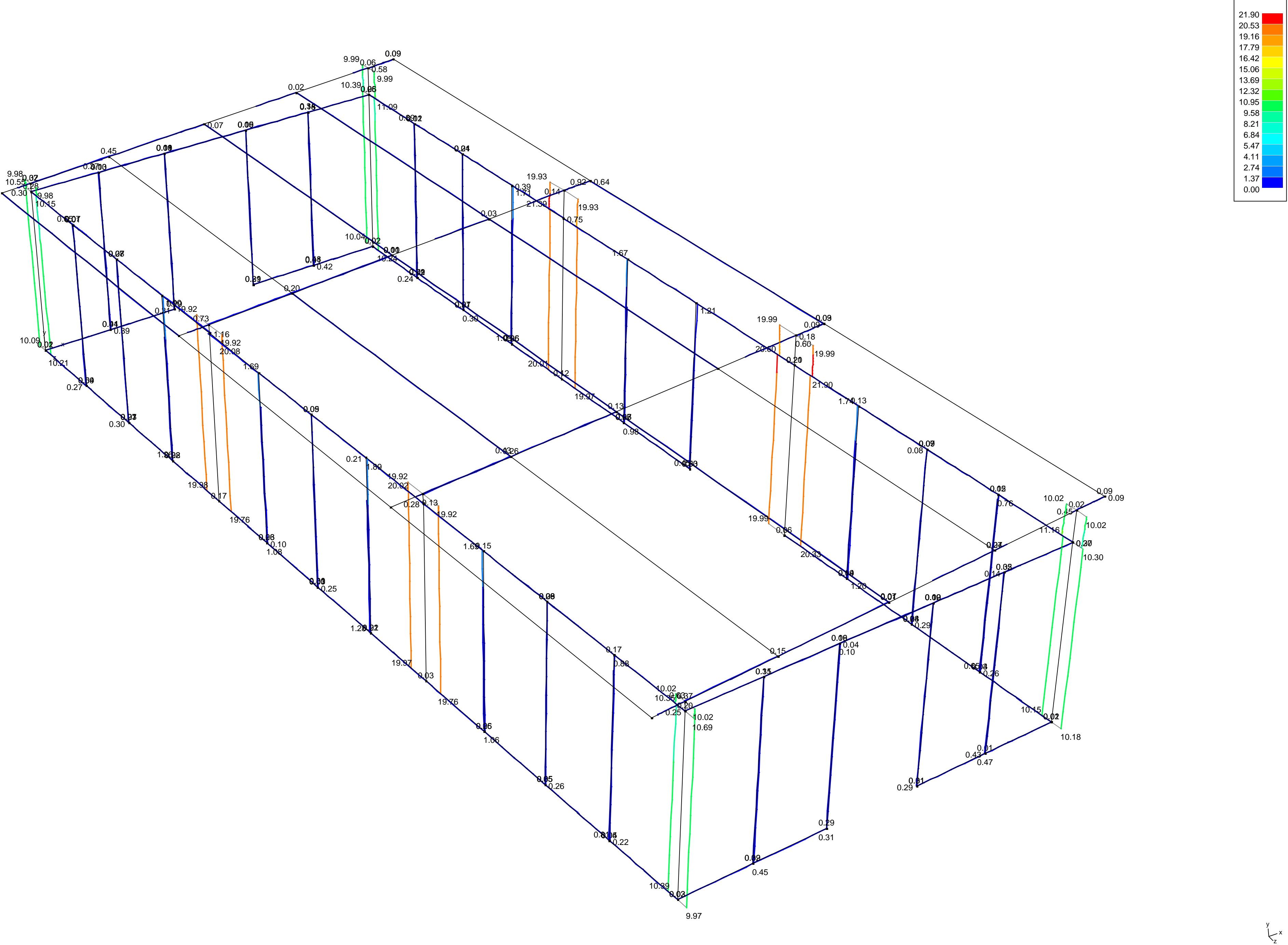


Plot - Drukspanning Sy' (N/mm²) - UGT FC

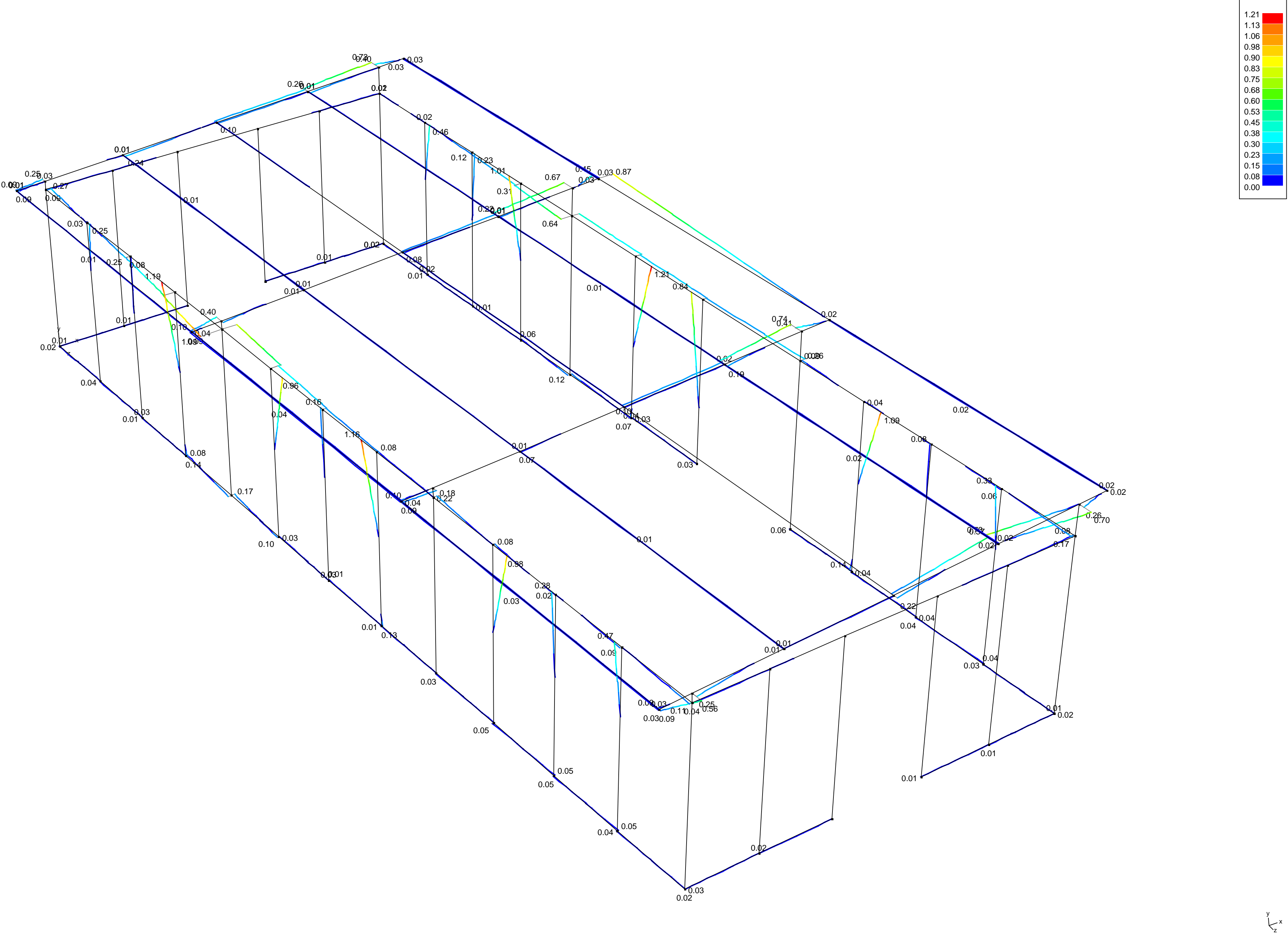


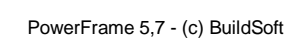
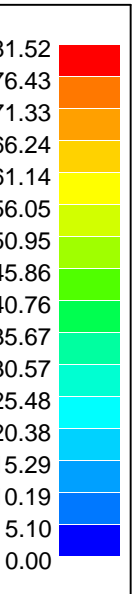


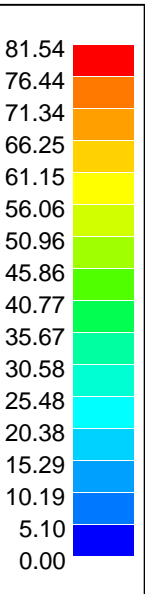
Plot - Drukspanning Sz' (N/mm²) - UGT FC














Plot - Trekspanning Sz' (N/mm²) - UGT FC


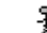
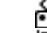
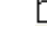
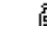






Data - Lastengroepen

lastengroepen	γ_w	γ_{w+}	γ_{w-}	γ_{g+}	$\psi/0$	$\psi/1$	$\psi/2$	
eigengewicht	1,35	1,35	1	1	1	1	1	
permanent	1,35	1,35	1	1	1	1	1	
Sneeuw	1,5	0	1	0	0,5	0	0	
Wind +x druk	1,5	0	1	0	0,6	0,2	0	
Wind -x druk	1,5	0	1	0	0,6	0,2	0	
Wind + z druk	1,5	0	1	0	0,6	0,2	0	
Wind - z druk	1,5	0	1	0	0,6	0,2	0	
Wind + x onderdruk	1,5	0	1	0	0,6	0,2	0	
Wind - x onderdruk	1,5	0	1	0	0,6	0,2	0	
Wind + z onderdruk	1,5	0	1	0	0,6	0,2	0	
Wind -z onderdruk	1,5	0	1	0	0,6	0,2	0	

-  = altijd samen
-  = alle combinaties
-  = alle combinaties, maar één last tegelijkertijd
-  = Seismisch event
-  = massa's voor trillingsanalyse