

## Concertor N80-2350

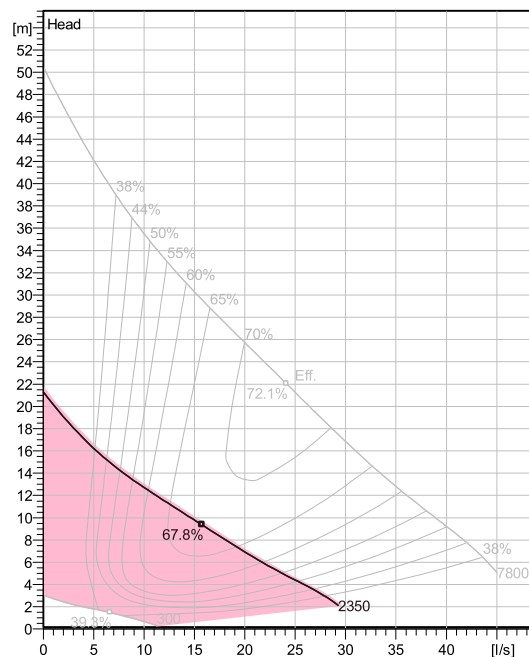
The most intelligent wastewater pump on the market. Suitable for customers operating traditional on/off pump stations who want to benefit from re-settable pump performance, clog detection and pump cleaning, soft start, constant power and motor protection.



### Technical specification



Curves according to: Water, pure [100%] ; 4°C; 999.9kg/m<sup>3</sup>; 1.569mm<sup>2</sup>/s



### Configuration

**Motor number**  
N6020.181 18-08-1AZ-W 2.2KW

**Installation type**  
P - Semi permanent, Wet

**Set power**  
2350 W

**Impeller diameter**  
170 mm

**Discharge diameter**  
80 mm

### Pump information

**Impeller diameter**  
170 mm

**Discharge diameter**  
80 mm

**Inlet diameter**  
100 mm

**Maximum operating speed**  
800-2129.7 rpm

**Number of vanes**  
2

### Materials

**Impeller**  
Grey cast iron

**Project** A-18-204  
**Block** Hajske CS 1

**Created by** Ing. Marek Néma  
**Created on** 4/26/2019

**Last update**

## Concertor N80-2350

### Technical specification



#### Motor - General

<b>Motor number</b> N6020.181 18-08-1AZ-W 2.2KW	<b>Phases</b> 3~	<b>Rated speed</b> 800-2130 rpm	<b>Rated power</b> 2.2 kW
<b>Approval</b> No	<b>Insulation class</b> H	<b>Rated current</b> 3.8 A	<b>Type of Duty</b> S1
<b>Frequency</b> 50 Hz	<b>Rated voltage</b> 400 V		

#### Motor - Technical

**Starting current**  
3.8 A

**Project** A-18-204  
**Block** Hajske CS 1

**Created by** Ing. Marek Něma  
**Created on** 4/26/2019

**Last update**

# Concertor N80-2350

## Performance curve

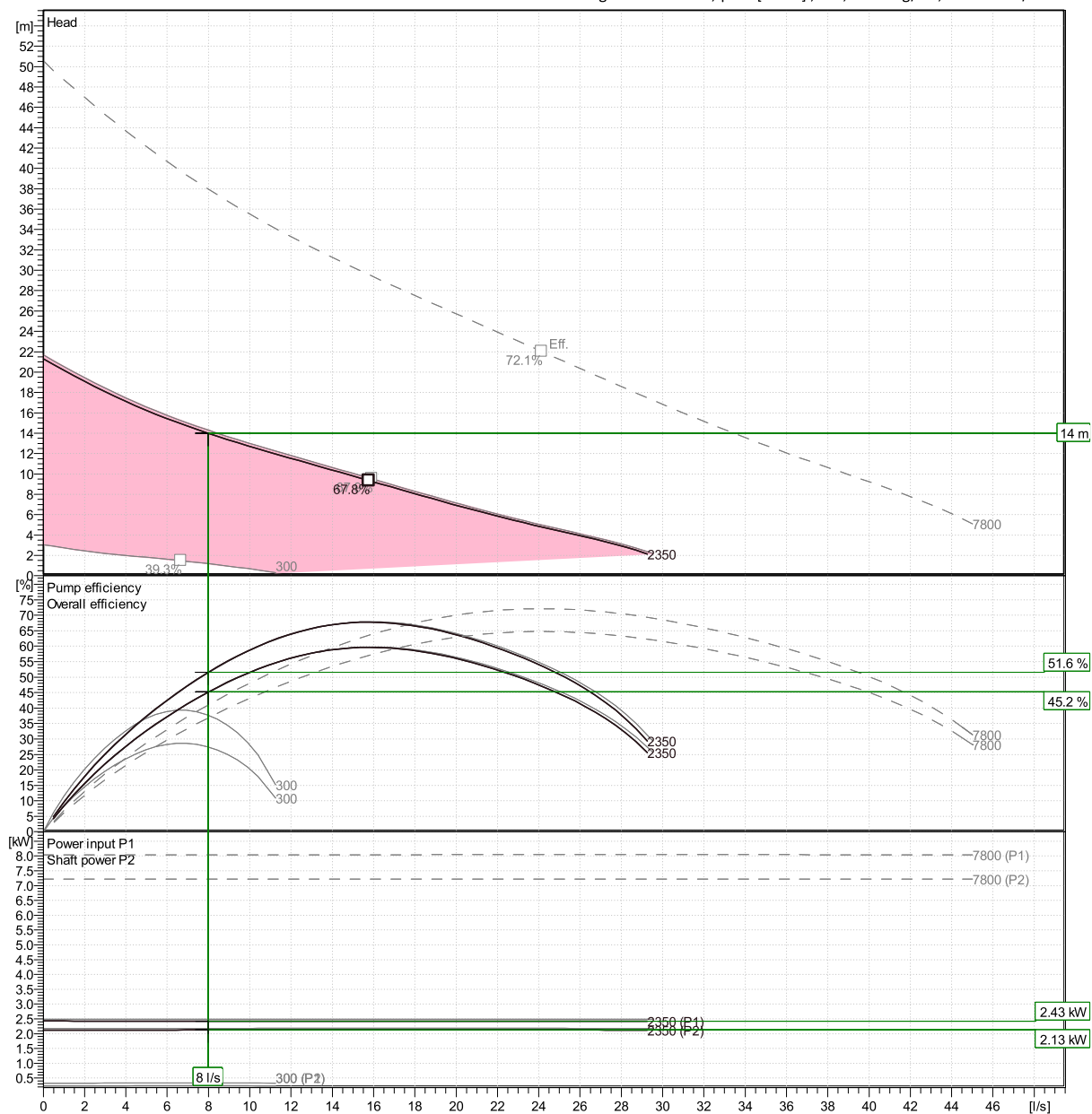


### Duty point

Flow  
8 l/s

Head  
14 m

Curves according to: Water, pure [100%] ; 4°C; 999.9kg/m³; 1.569mm²/s



Project A-18-204  
Block Hajske CS 1

Created by Ing. Marek Néma  
Created on 4/26/2019

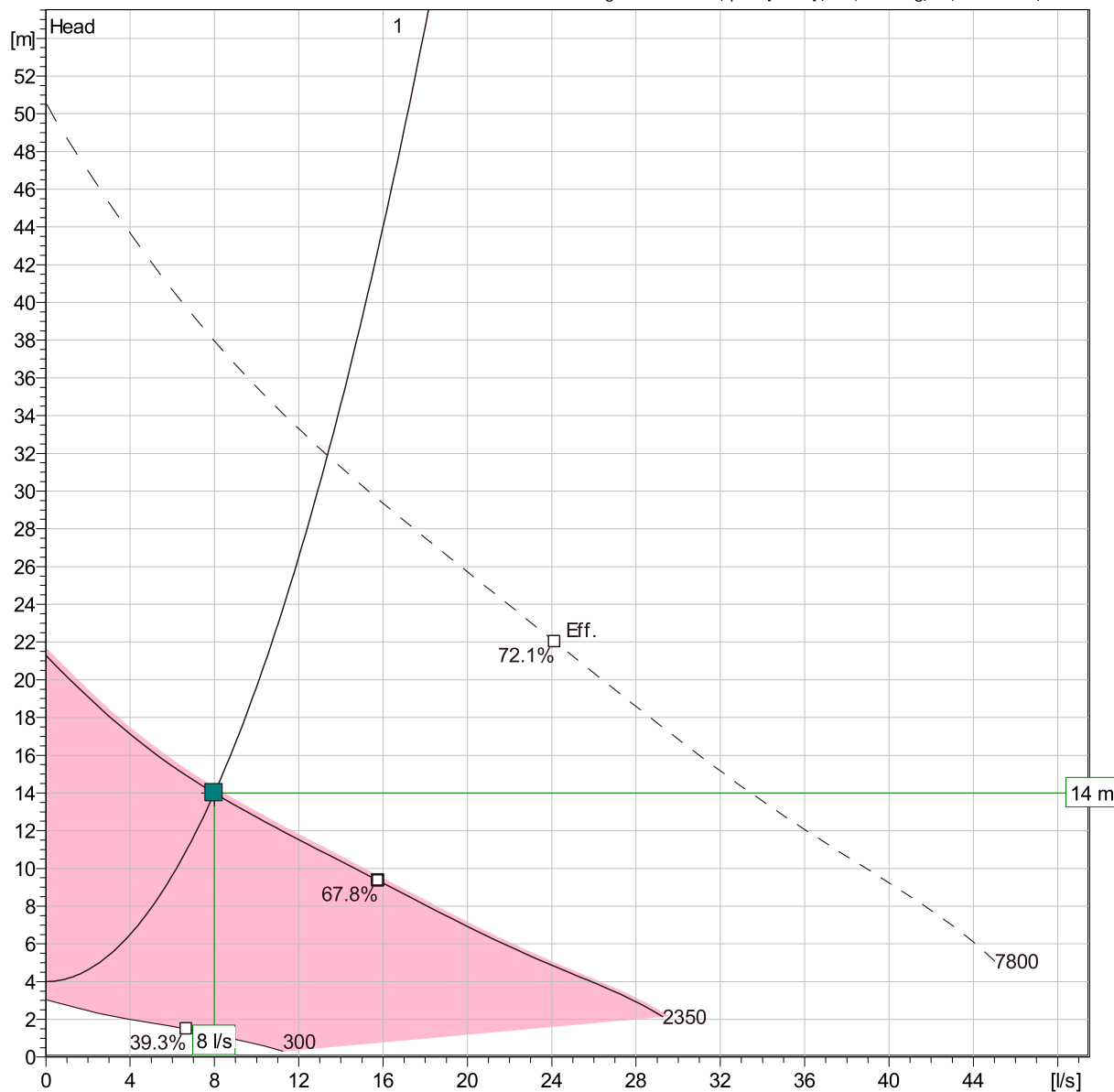
Last update

# Concertor N80-2350

## Duty Analysis



Curves according to: Water, pure [100%] ; 4°C; 999.9kg/m³; 1.569mm²/s



## Operating characteristics

Pumps running /System	Individual pump			Total			Pump eff.	Specific energy	NPSH <sub>re</sub>
	Flow	Head	Shaft power	Flow	Head	Shaft power			
1	8 l/s	14 m	2.13 kW	8 l/s	14 m	2.13 kW	51.6 %	0.0842 kWh/m³	2.16 m

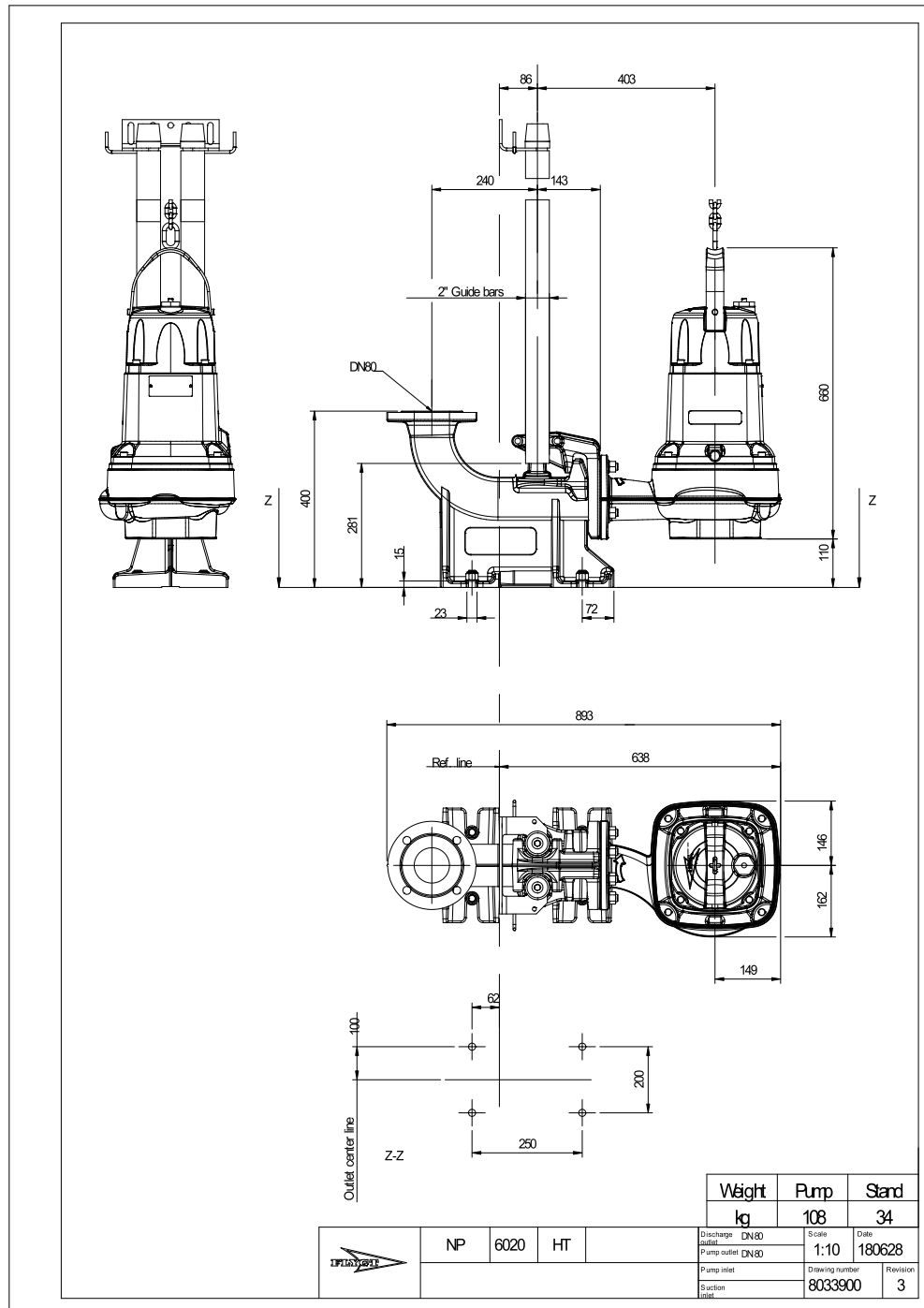
Project A-18-204  
Block Hajske CS 1

Created by Ing. Marek Něma  
Created on 4/26/2019

Last update

# Concertor N80-2350

Dimensional drawing



**Project** A-18-204  
**Block** Hajske CS 1

**Created by** Ing. Marek Néma  
**Created on** 4/26/2019

**Last update**