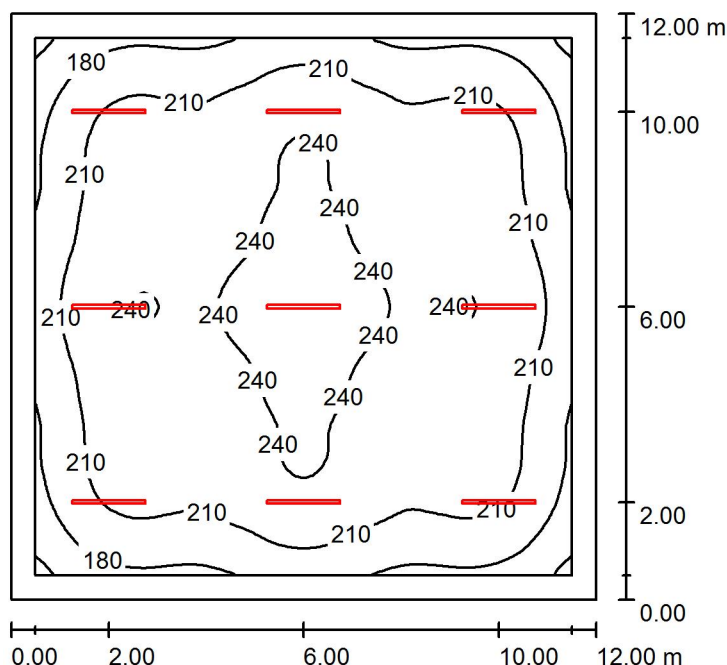


Operator
Telephone
Fax
e-Mail

HALAč.1 / Summary



Height of Room: 4.500 m, Mounting Height: 4.500 m, Maintenance factor: 0.67

Values in Lux, Scale 1:155

Surface	ρ [%]	E_{av} [lx]	E_{min} [lx]	E_{max} [lx]	u_0
Workplane	/	216	143	262	0.660
Floor	20	191	111	237	0.581
Ceiling	70	50	43	68	0.874
Walls (4)	50	123	62	193	/

Workplane:

Height: 0.750 m
Grid: 64 x 64 Points
Boundary Zone: 0.500 m

Illuminance Quotient (according to LG7): Walls / Working Plane: 0.583, Ceiling / Working Plane: 0.230.
Proportion of points with less than 400 lx (for IEQ-7): 100.00%.

Luminaire Parts List

No.	Pieces	Designation (Correction Factor)	Φ (Luminaire) [lm]	Φ (Lamps) [lm]	P [W]
1	9	LEDVANCE GmbH 4058075541207 DP 1500 46W 840 IP65 GY (1.000)	6400	6400	46.0
Total:			57598	57600	414.0

Specific connected load: $2.88 \text{ W/m}^2 = 1.33 \text{ W/m}^2/100 \text{ lx}$ (Ground area: 144.00 m^2)