

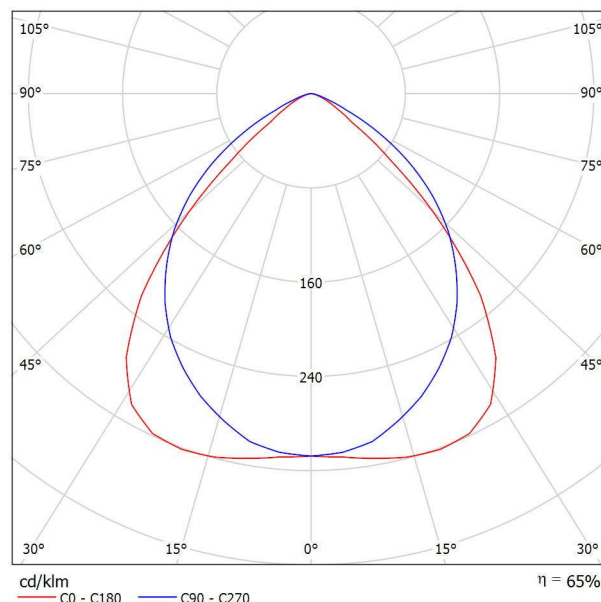


Operator
Telephone
Fax
e-Mail

PHILIPS TBS260 3xTL5-28W HFS M6_865 / Luminaire Data Sheet

Luminous emittance 1:

See our luminaire catalog for an image of the luminaire.



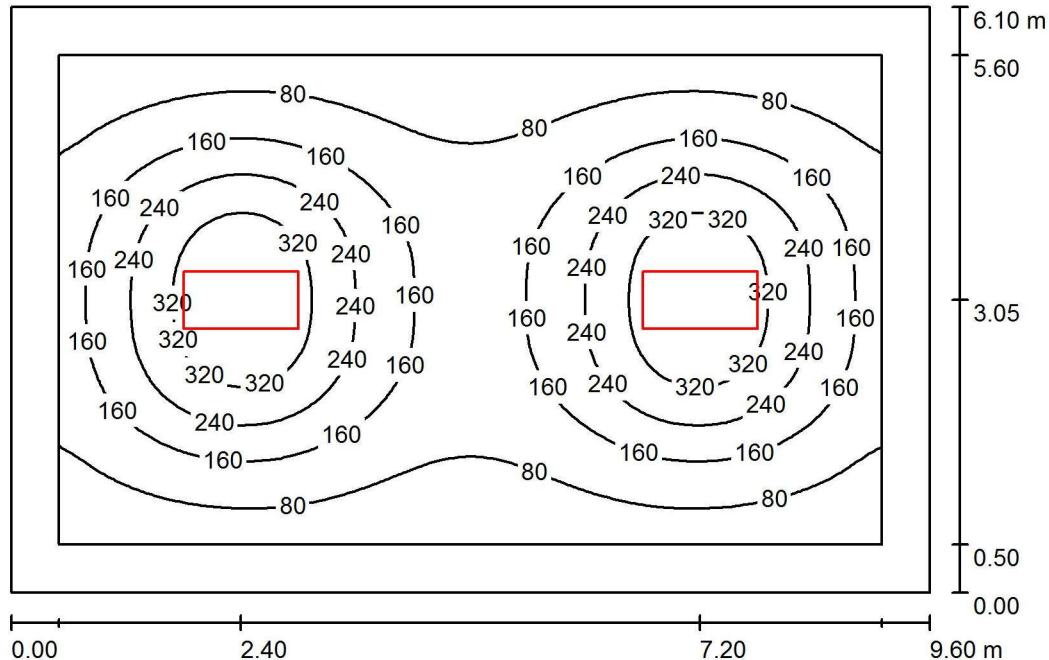
Luminaire classification according to CIE: 100
CIE flux code: 66 95 99 100 65

Luminous emittance 1:

Glare Evaluation According to UGR											
p Ceiling	70	70	50	50	30	70	70	50	50	30	
p Walls	50	30	50	30	30	50	30	50	30	30	
p Floor	20	20	20	20	20	20	20	20	20	20	
Room Size X Y	Viewing direction at right angles to lamp axis					Viewing direction parallel to lamp axis					
2H	2H	8.1	9.2	8.4	9.4	9.6	14.2	15.3	14.5	15.5	15.7
	3H	8.5	9.4	8.8	9.7	9.9	14.5	15.4	14.8	15.6	15.9
	4H	8.5	9.4	8.9	9.7	10.0	14.5	15.3	14.8	15.6	15.9
	6H	8.5	9.3	8.9	9.6	9.9	14.4	15.2	14.8	15.5	15.8
	8H	8.5	9.3	8.9	9.6	9.9	14.4	15.2	14.7	15.5	15.8
4H	12H	8.5	9.2	8.8	9.5	9.9	14.4	15.1	14.7	15.4	15.7
	2H	8.3	9.2	8.7	9.5	9.8	14.1	15.0	14.4	15.2	15.5
	3H	8.8	9.6	9.2	9.9	10.2	14.3	15.1	14.7	15.4	15.7
	4H	8.9	9.6	9.3	9.9	10.2	14.4	15.0	14.8	15.4	15.7
	6H	8.9	9.5	9.3	9.9	10.2	14.4	14.9	14.8	15.3	15.7
8H	8H	8.9	9.4	9.4	9.8	10.2	14.4	14.9	14.8	15.3	15.7
	12H	8.9	9.4	9.3	9.8	10.2	14.3	14.8	14.8	15.2	15.6
	4H	8.9	9.4	9.3	9.8	10.2	14.3	14.8	14.7	15.2	15.6
	6H	9.0	9.4	9.4	9.8	10.2	14.3	14.7	14.8	15.1	15.6
	8H	9.0	9.3	9.4	9.8	10.2	14.3	14.6	14.8	15.1	15.6
12H	12H	8.9	9.2	9.4	9.7	10.2	14.3	14.6	14.7	15.0	15.5
	4H	8.9	9.3	9.3	9.8	10.2	14.3	14.7	14.7	15.1	15.5
	6H	8.9	9.3	9.4	9.7	10.2	14.3	14.6	14.7	15.1	15.5
	8H	8.9	9.2	9.4	9.7	10.2	14.2	14.5	14.7	15.0	15.5
Variation of the observer position for the luminaire distances S											
S = 1.0H		+1.5 / -3.2					+0.7 / -0.9				
S = 1.5H		+2.7 / -5.7					+1.2 / -2.7				
S = 2.0H		+4.3 / -7.1					+2.7 / -5.3				
Standard table		BK01					BK01				
Correction Summand		-13.3					-11.3				
Corrected Glare Indices referring to 7350lm Total Luminous Flux											

Operator
Telephone
Fax
e-Mail

2.09 Spálňa / Summary



Height of Room: 2.880 m, Mounting Height: 2.934 m, Maintenance factor: 0.80

Values in Lux, Scale 1:79

Surface	ρ [%]	E_{av} [lx]	E_{min} [lx]	E_{max} [lx]	u_0
Workplane	/	165	32	395	0.194
Floor	20	124	37	235	0.298
Ceiling	70	20	14	24	0.667
Walls (4)	50	31	14	84	/

Workplane:

Height: 0.750 m
Grid: 64 x 64 Points
Boundary Zone: 0.500 m

UGR

Left Wall <10
Lower Wall <10
(CIE, SHR = 1.00.)

Lengthways-

Across

to luminaire axis

Left Wall <10
Lower Wall <10

Illuminance Quotient (according to LG7): Walls / Working Plane: 0.160, Ceiling / Working Plane: 0.123.
Proportion of points with less than 400 lx (for IEQ-7): 100.00%.

Luminaire Parts List

No.	Pieces	Designation (Correction Factor)	Φ (Luminaire) [lm]	Φ (Lamps) [lm]	P [W]
1	2	PHILIPS TBS260 3xTL5-28W HFS M6_865 (1.000)	4777	7350	94.0
Total:			9555	14700	188.0

Specific connected load: $3.21 \text{ W/m}^2 = 1.95 \text{ W/m}^2/100 \text{ lx}$ (Ground area: 58.56 m^2)

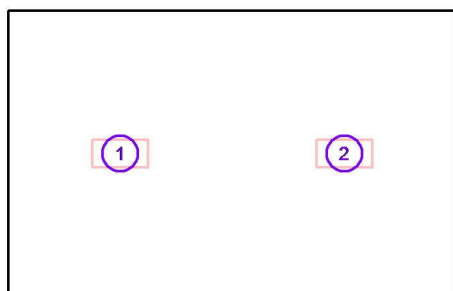


Operator
Telephone
Fax
e-Mail

2.09 Spálňa / Luminaires (coordinates list)

PHILIPS TBS260 3xTL5-28W HFS M6_865

4777 lm, 94.0 W, 1 x 3 x TL5-28W/865 (Correction Factor 1.000).



No.	Position [m]			Rotation [°]		
	X	Y	Z	X	Y	Z
1	2.400	3.050	2.934	0.0	0.0	90.0
2	7.200	3.050	2.934	0.0	0.0	90.0