

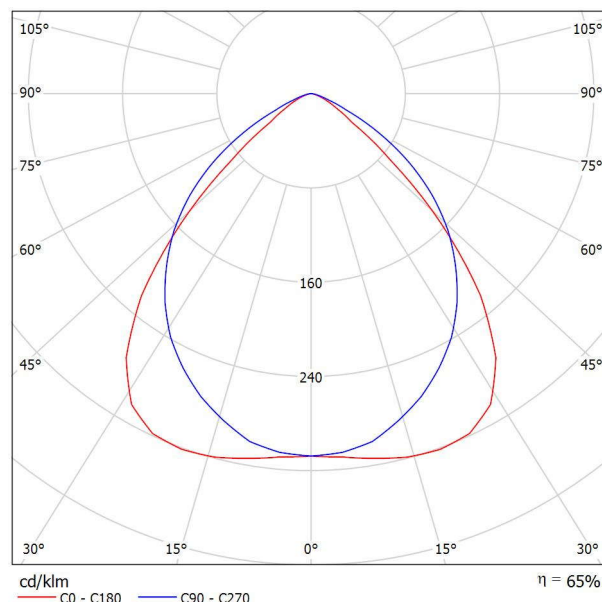


Operator  
Telephone  
Fax  
e-Mail

## PHILIPS TBS260 3xTL5-28W HFS M6\_865 / Luminaire Data Sheet

Luminous emittance 1:

See our luminaire catalog for an image of the luminaire.



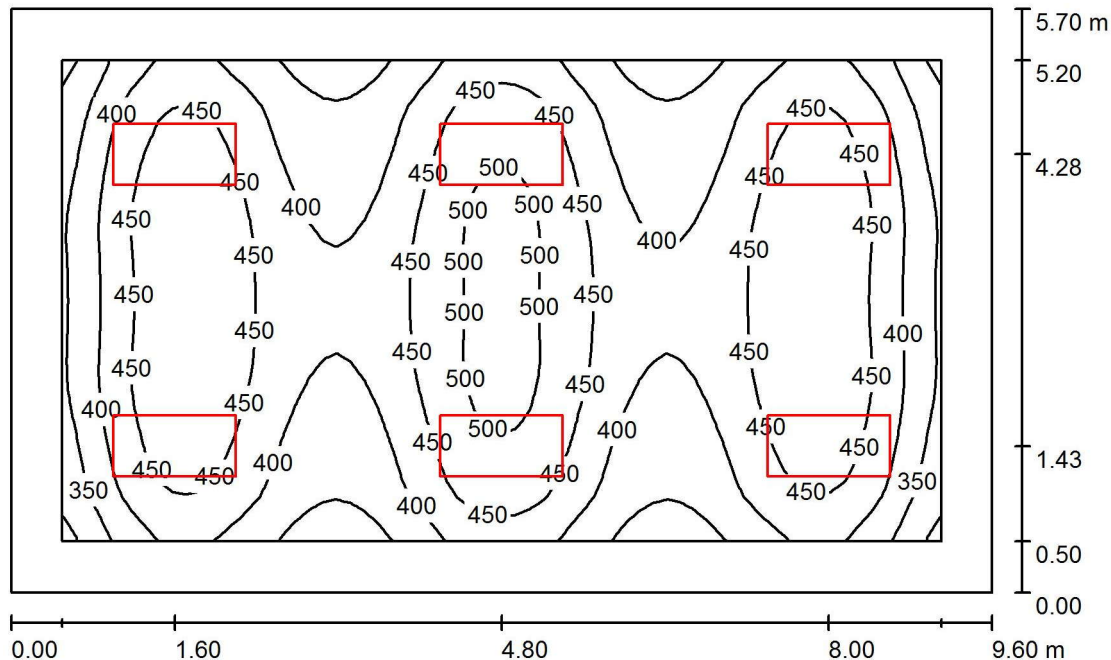
Luminaire classification according to CIE: 100  
CIE flux code: 66 95 99 100 65

Luminous emittance 1:

Glare Evaluation According to UGR												
p Ceiling	70	70	50	50	30	70	70	50	50	30		
p Walls	50	30	50	30	30	50	30	50	30	30		
p Floor	20	20	20	20	20	20	20	20	20	20		
Room Size X      Y	Viewing direction at right angles to lamp axis					Viewing direction parallel to lamp axis						
2H	2H	8.1	9.2	8.4	9.4	9.6	14.2	15.3	14.5	15.5	15.7	
	3H	8.5	9.4	8.8	9.7	9.9	14.5	15.4	14.8	15.6	15.9	
	4H	8.5	9.4	8.9	9.7	10.0	14.5	15.3	14.8	15.6	15.9	
	6H	8.5	9.3	8.9	9.6	9.9	14.4	15.2	14.8	15.5	15.8	
	8H	8.5	9.3	8.9	9.6	9.9	14.4	15.2	14.7	15.5	15.8	
4H	12H	8.5	9.2	8.8	9.5	9.9	14.4	15.1	14.7	15.4	15.7	
	2H	8.3	9.2	8.7	9.5	9.8	14.1	15.0	14.4	15.2	15.5	
	3H	8.8	9.6	9.2	9.9	10.2	14.3	15.1	14.7	15.4	15.7	
	4H	8.9	9.6	9.3	9.9	10.2	14.4	15.0	14.8	15.4	15.7	
	6H	8.9	9.5	9.3	9.9	10.2	14.4	14.9	14.8	15.3	15.7	
8H	8H	8.9	9.4	9.4	9.8	10.2	14.4	14.9	14.8	15.3	15.7	
	12H	8.9	9.4	9.3	9.8	10.2	14.3	14.8	14.8	15.2	15.6	
	4H	8.9	9.4	9.3	9.8	10.2	14.3	14.8	14.7	15.2	15.6	
	6H	9.0	9.4	9.4	9.8	10.2	14.3	14.7	14.8	15.1	15.6	
	8H	9.0	9.3	9.4	9.8	10.2	14.3	14.6	14.8	15.1	15.6	
12H	12H	8.9	9.2	9.4	9.7	10.2	14.3	14.6	14.7	15.0	15.5	
	4H	8.9	9.3	9.3	9.8	10.2	14.3	14.7	14.7	15.1	15.5	
	6H	8.9	9.3	9.4	9.7	10.2	14.3	14.6	14.7	15.1	15.5	
	8H	8.9	9.2	9.4	9.7	10.2	14.2	14.5	14.7	15.0	15.5	
Variation of the observer position for the luminaire distances S												
S = 1.0H		+1.5 / -3.2					+0.7 / -0.9					
S = 1.5H		+2.7 / -5.7					+1.2 / -2.7					
S = 2.0H		+4.3 / -7.1					+2.7 / -5.3					
Standard table		BK01					BK01					
Correction Summand		-13.3					-11.3					
Corrected Glare Indices referring to 7350lm Total Luminous Flux												

Operator  
Telephone  
Fax  
e-Mail

## 2.10 Herňa / Summary



Height of Room: 2.880 m, Mounting Height: 2.934 m, Maintenance factor: 0.80

Values in Lux, Scale 1:74

Surface	$\rho$ [%]	$E_{av}$ [lx]	$E_{min}$ [lx]	$E_{max}$ [lx]	$u_0$
Workplane	/	425	290	518	0.683
Floor	20	349	199	480	0.572
Ceiling	70	69	54	77	0.784
Walls (4)	50	145	55	242	/

### Workplane:

Height: 0.750 m  
Grid: 64 x 32 Points  
Boundary Zone: 0.500 m

### UGR

Left Wall  
Lower Wall  
(CIE, SHR = 1.00.)

### Lengthways-

<10  
<10

### Across

14  
14

### to luminaire axis

Illuminance Quotient (according to LG7): Walls / Working Plane: 0.315, Ceiling / Working Plane: 0.162.  
Proportion of points with less than 400 lx (for IEQ-7): 31.35%.

### Luminaire Parts List

No.	Pieces	Designation (Correction Factor)	$\Phi$ (Luminaire) [lm]	$\Phi$ (Lamps) [lm]	P [W]
1	6	PHILIPS TBS260 3xTL5-28W HFS M6_865 (1.000)	4777	7350	94.0
Total:			28665	44100	564.0

Specific connected load: 10.31 W/m<sup>2</sup> = 2.43 W/m<sup>2</sup>/100 lx (Ground area: 54.72 m<sup>2</sup>)

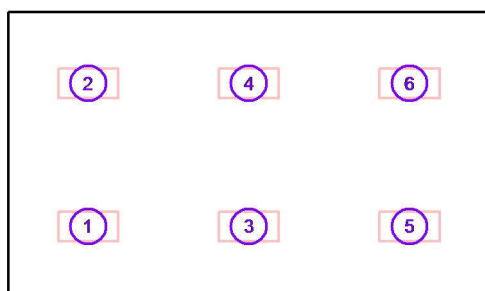


Operator  
Telephone  
Fax  
e-Mail

## 2.10 Herňa / Luminaires (coordinates list)

### PHILIPS TBS260 3xTL5-28W HFS M6\_865

4777 lm, 94.0 W, 1 x 3 x TL5-28W/865 (Correction Factor 1.000).



No.	Position [m]			Rotation [°]		
	X	Y	Z	X	Y	Z
1	1.600	1.430	2.934	0.0	0.0	90.0
2	1.600	4.280	2.934	0.0	0.0	90.0
3	4.800	1.430	2.934	0.0	0.0	90.0
4	4.800	4.280	2.934	0.0	0.0	90.0
5	8.000	1.430	2.934	0.0	0.0	90.0
6	8.000	4.280	2.934	0.0	0.0	90.0