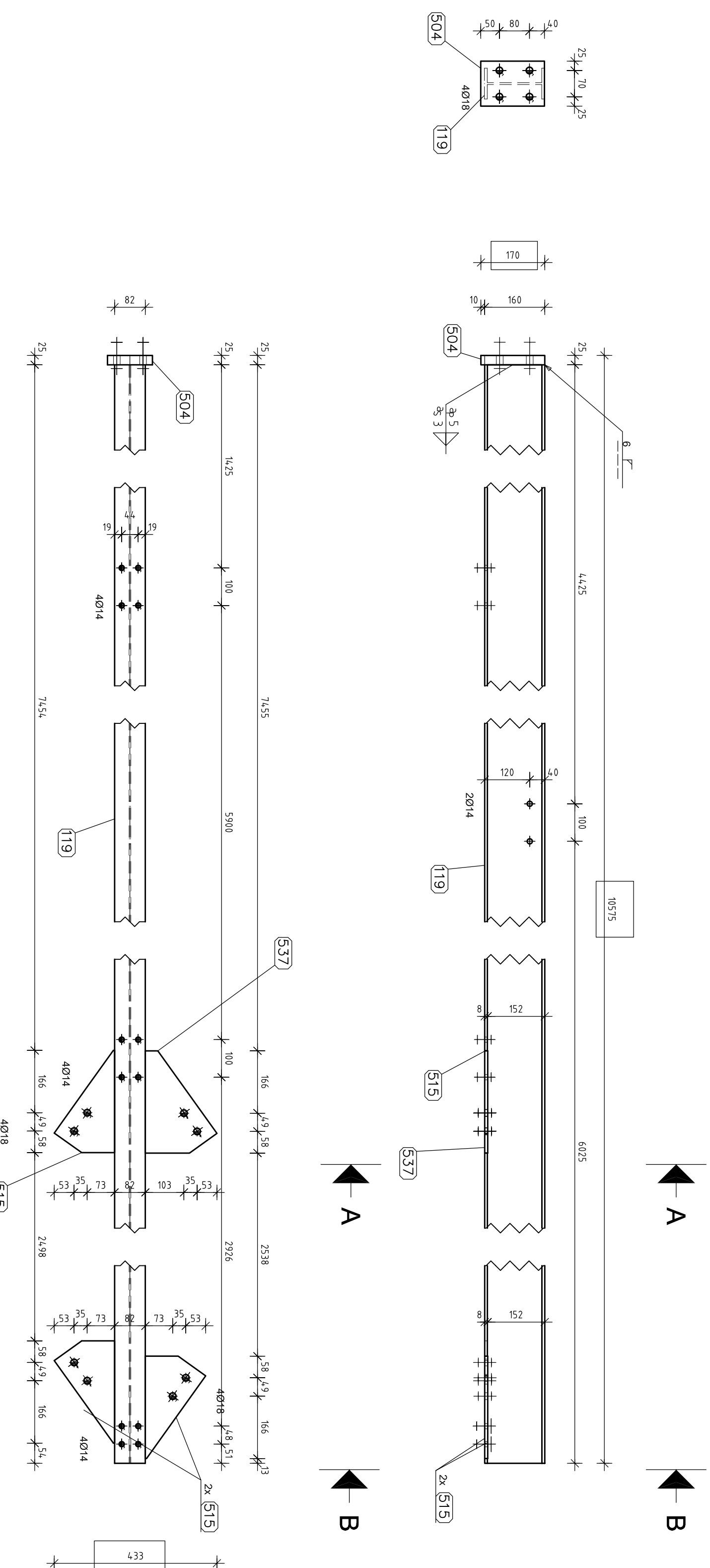
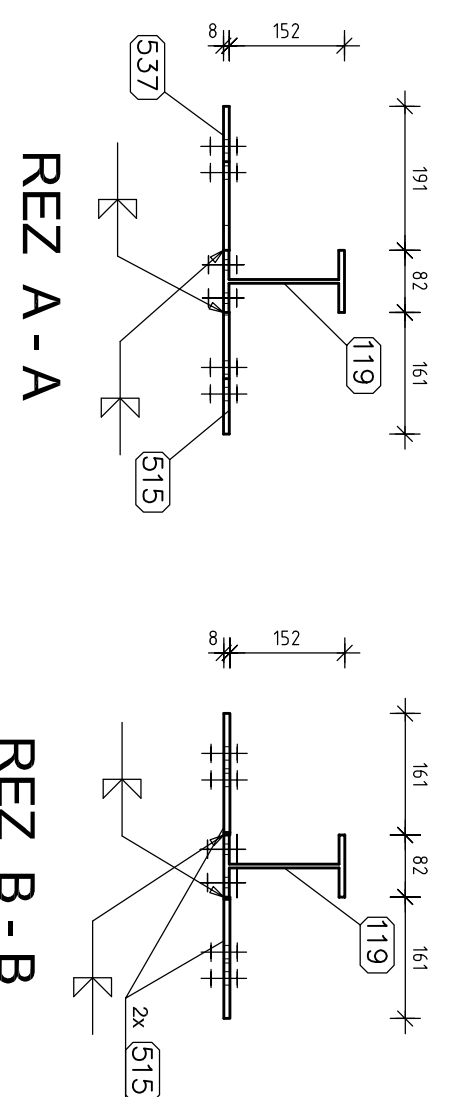


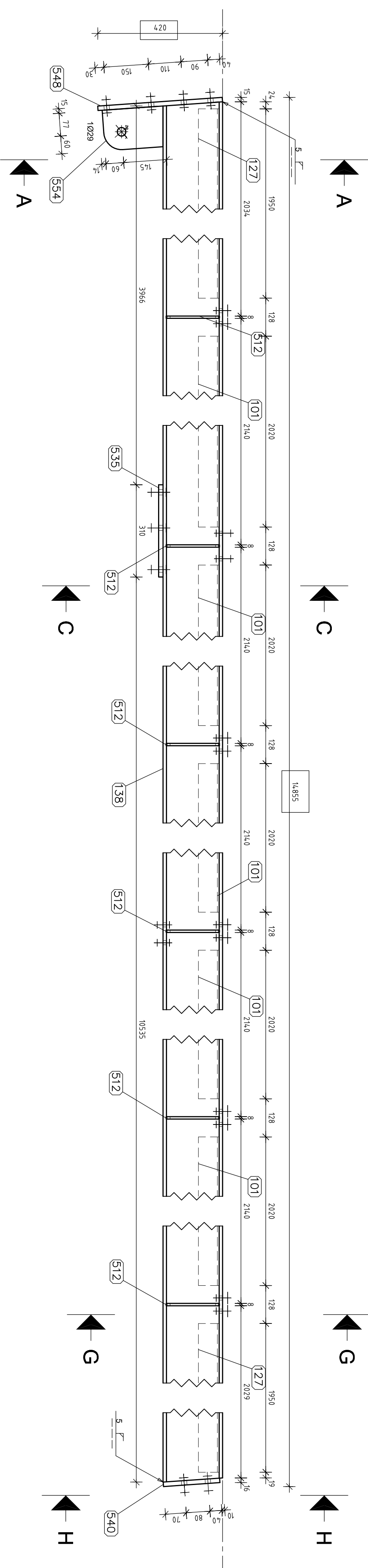
2XHd11
IPe160...10550 - S355J2G3



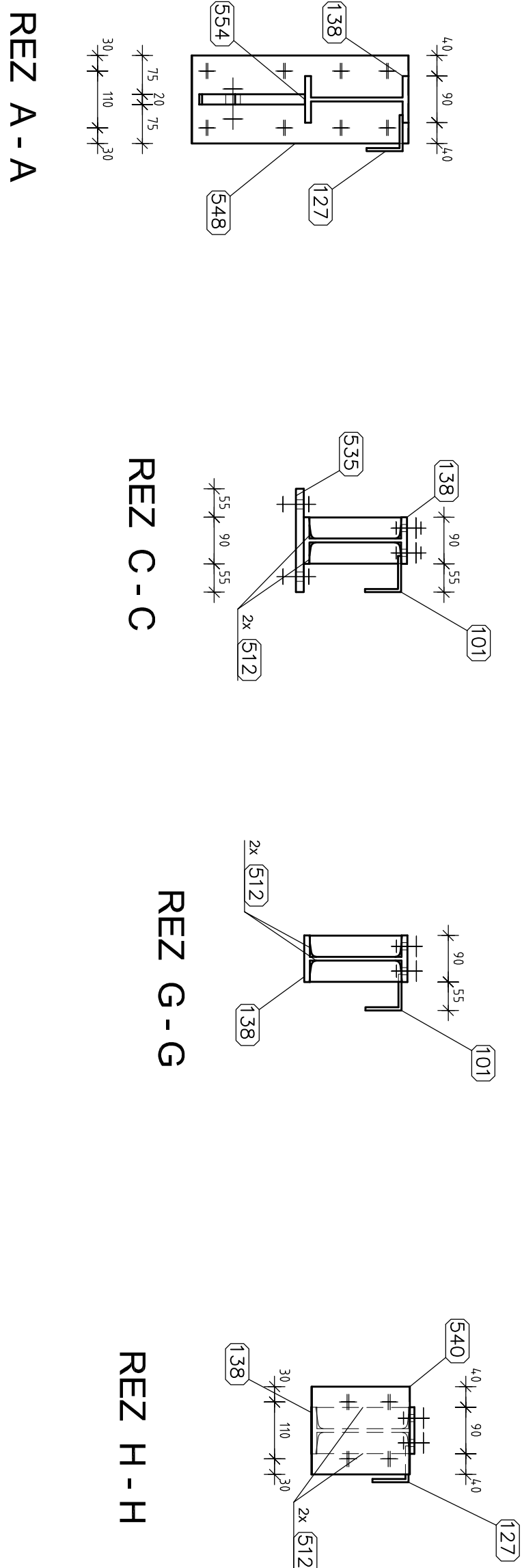
C.O.	Poset	Type	DBA	Size (mm)	Material
	(K5)	2			
		1PE160			
H411			10.550	-	S355J2C3
119	1	1PE160			
504	1	PL 25x120-170	170	120	S355J2C3
515	3	PL 3x81x1-272	272	181	S235J2G2
537	1	PL 3x81x1-272	272	181	S235J2G2



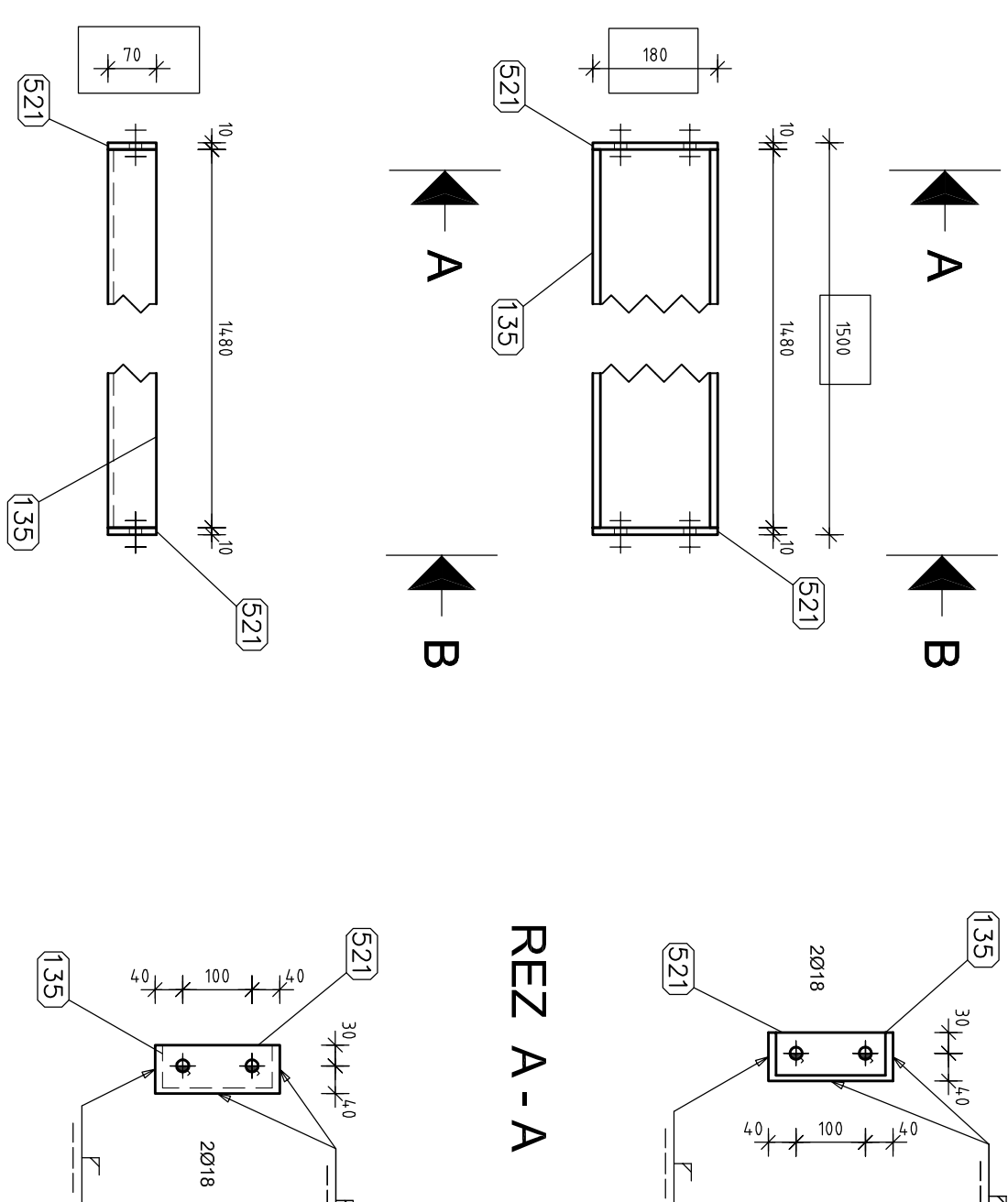
1XHd15 1200...14825 - S235JRG2



C.O.	Pos	Typ	Dbase (mm)	Shoe Material
16415	1	1200		
101	5	L7006	2 100	- S235JR02
127	2	L7006	1 850	- S235JR02
138	1	I200	14 850	- S235JR02
152	12	Pt. 8x41, 142	182	20 S235JR02
525	1	Pt. 10x20, 310	310	20 S235JR02
526	1	Pt. 10x20, 310	310	20 S235JR02
548	1	Pt. 15x17, 420	170	20 S235JR02
554	1	Pt. 20x17, 205	205	13 S235JR02

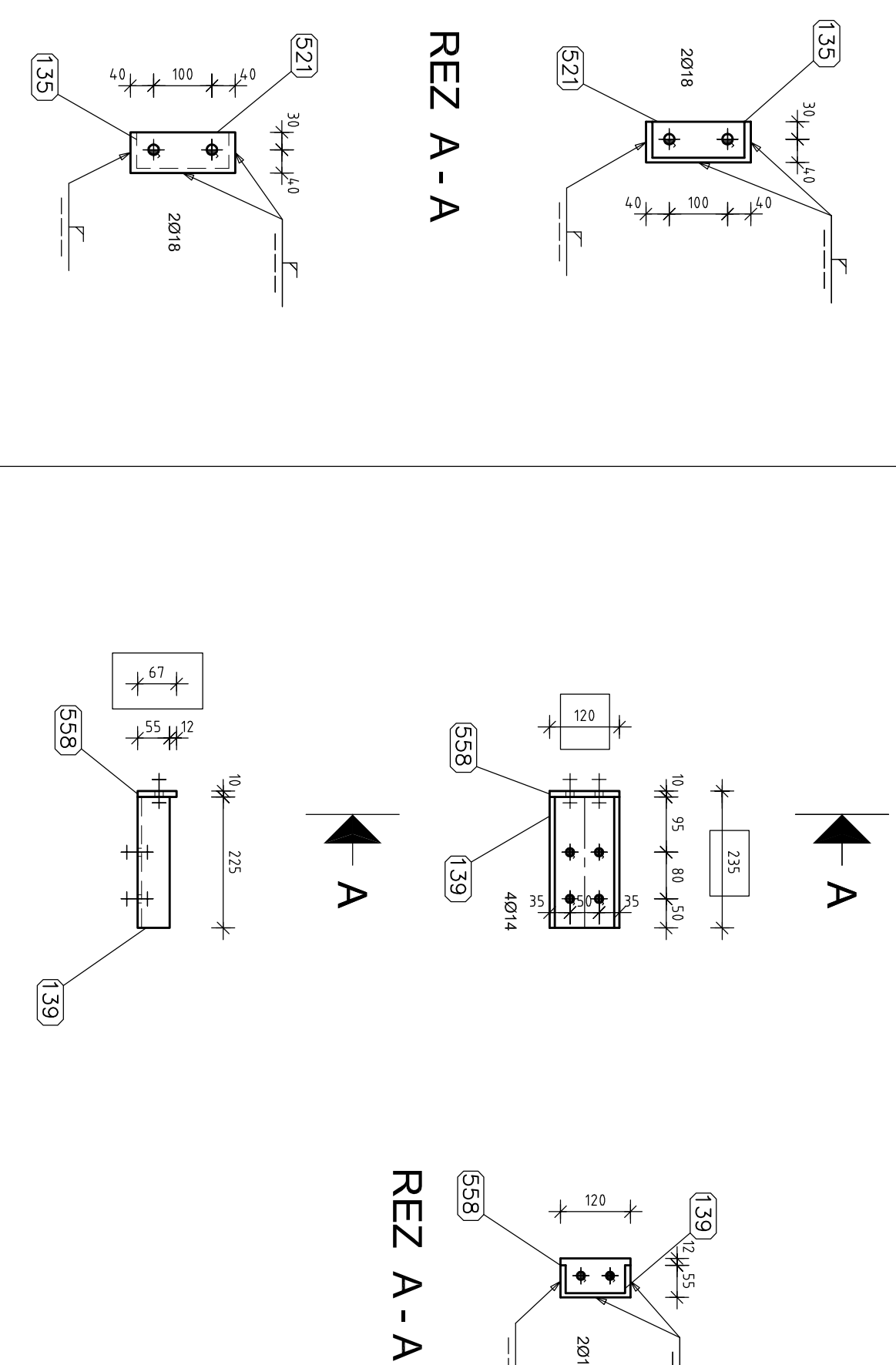


2xHd12 U180...1480 – S235JRG2



\hat{C}_p	Prodot	Typ	Dizka (mm)	Sirca (mm)	Materi
	(Ks)				
H412	2	U180			
135	1	U180	1 480	-	S235JR/G2
521	2	PL 10x70..180	180	70	S235JR/G2

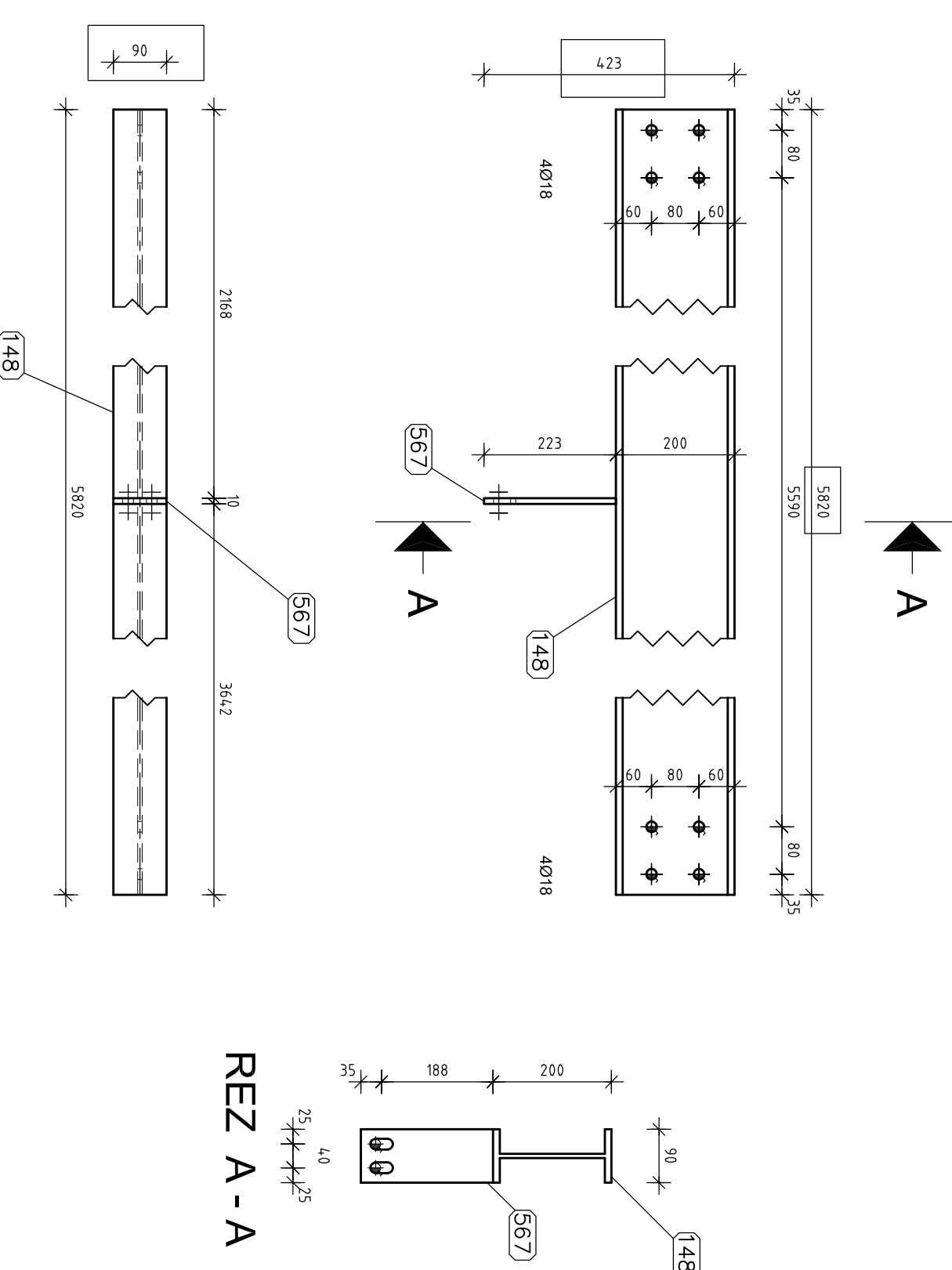
1xHd13 U120...225 - S235JRG2



C.p.	Pocket	Type	DkSn (mm)	SkSn (mm)	Material
	(Ks)				
Hd13	1	U120			
139	1	U120	225	-	S235JRg2
556	1	PL 10x67...120	120	67	S235JRg2

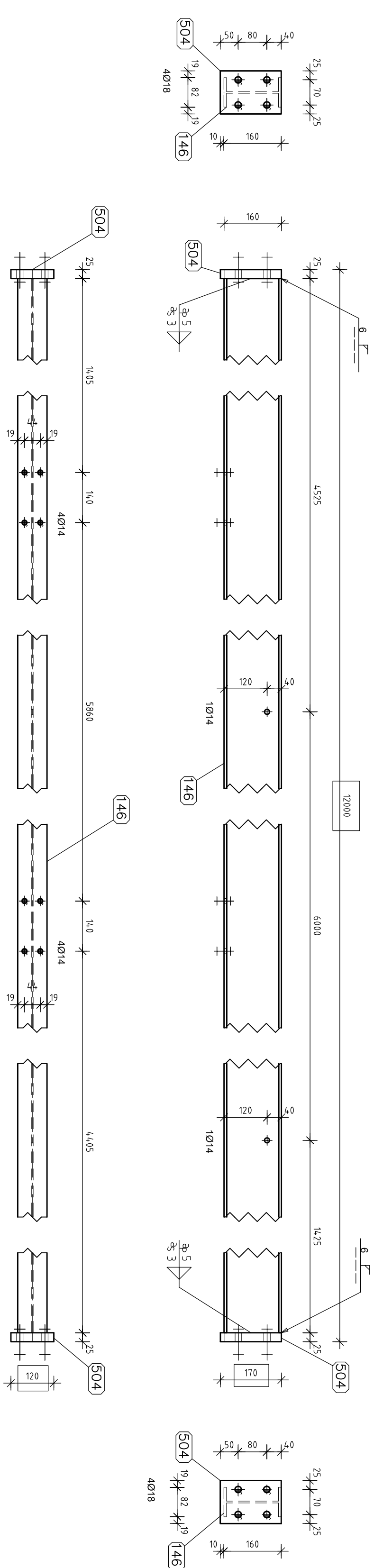
INDEX A : DÍŽKA

1XHd14
I200...5820 – S235JRG2



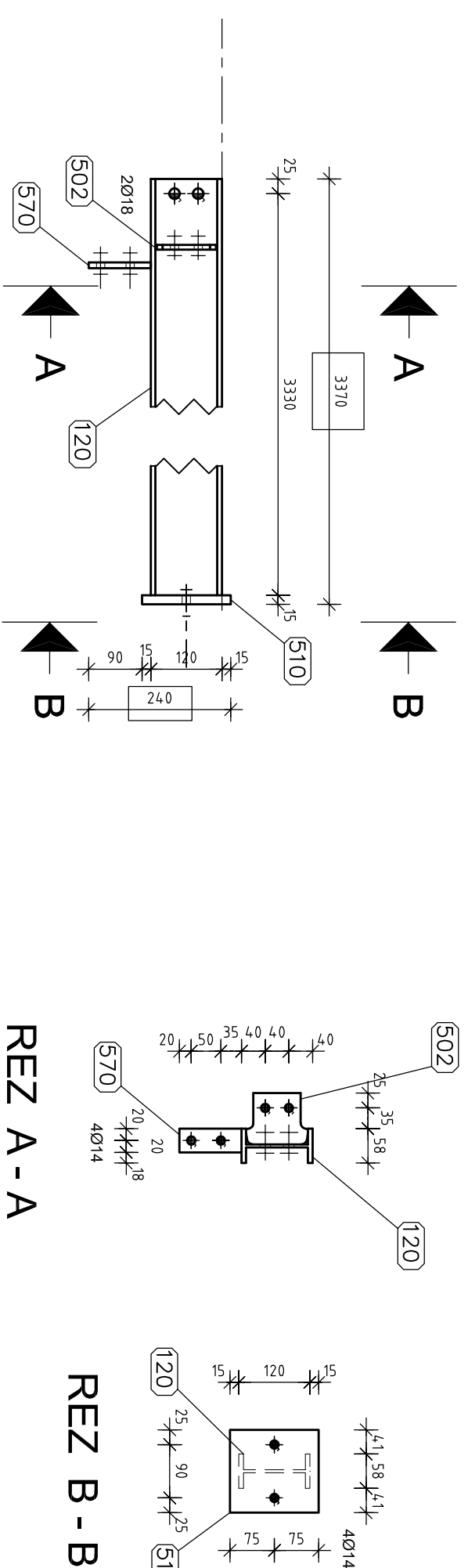
Çöp	Probet	Tip	DLpa	Şıra	Materyal
	(ks)		(mm)	(mm)	
H414	1	I200			
146	1	I200	5 820	-	S235JRG2
567	1	Pl. 10x40. 223	223	90	S235JRG2

1XHd16
IPE160...11950 – S355J2G3



Číslo	Prostředí	Typ	Délka (mm)	Šířka (mm)	Materiál
	(Ks)				
Hd16	1	IPE160			
146	1	IPE160	11 950	-	S355J2G3
504	2	PL 20x120...170	170	120	S355J2G3

1xHd17 1120...3355 - S235JR G2

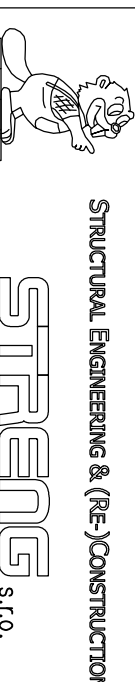


C.p.	Pool	Type	Oliza (mm)	Slica (mm)	Material
HA17	1	1H20	3 365		
120	1	1H20	86		SZ55-RG2
502	1	Pr. 8x8h..107	107		SZ55-RG2
510	1	Pr. 15x140..150	150		SZ55-RG2
570	1	Pr. 10x40..105	105		SZ55-RG2

INDEX A: Hd13,Hd15

Neoznačené zvary sú hrúbky $a=4 \pm 0,000=H.H$ podľahy existujúcej haly

Konštrukčná ocel: S235, S355



STRUCTURAL ENGINEERING & (RE-)CONSTRUCTION

STEEN

Zadp. projektant	Wypracował	Kresił
------------------	------------	--------

Ing. Donis	Kortali	Kortali

Miesto stavby	Nový žviol – Tonkovec
---------------	-----------------------

Investor	Bognár Árpád
----------	--------------

Stavba

MASOVY KROBA

N620V

OK - Hd11-17